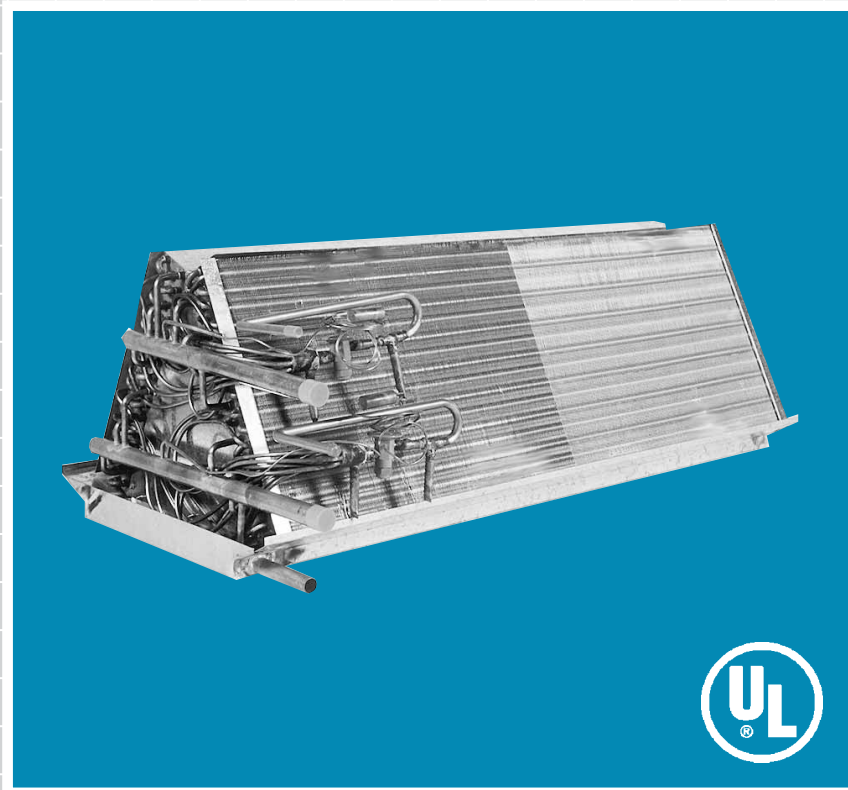


Magic Aire®

VX SERIES • HX SERIES



VERTICAL AND HORIZONTAL DIRECT EXPANSION COILS

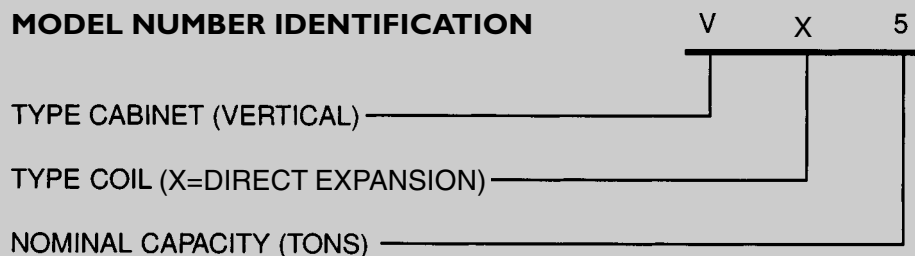
UNITED ELECTRIC COMPANY, L.P.

501 Galveston St. • Wichita Falls, Texas 76301 • 940-397-2100 • Fax 940-397-2166

1. Coils are constructed of rifled copper tube and aluminum lanced fin material.
2. Optional cabinet for VX coil is fabricated from heavy gauge galvanealed steel, coated inside and out with Magic Aire baked powder enamel coating, then insulated with 3/4"-1.5# fiberglass insulation.
3. Coil connections are on the LEFT hand side of the cabinet when facing the access panels.
4. Coils are stocked with thermal expansion valve mounted with side port distributors.
5. **NOTICE:** CONTACT FACTORY FOR COMPATIBILITY WITH SPECIFIC HEAT PUMP MODELS. Optional heat pump by-pass kit available for field mounting.
6. VX-7.5, 10 and 15 are available in either single or dual circuit from stock.
7. Coil and cabinet are sold and shipped separately, except VX-15V sold and shipped with coil in cabinet.

Product Description

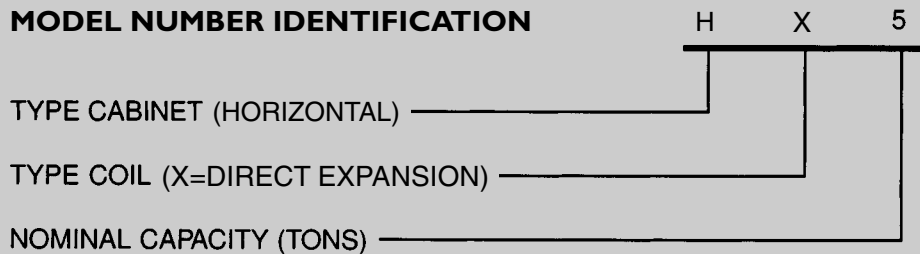
MODEL NUMBER IDENTIFICATION

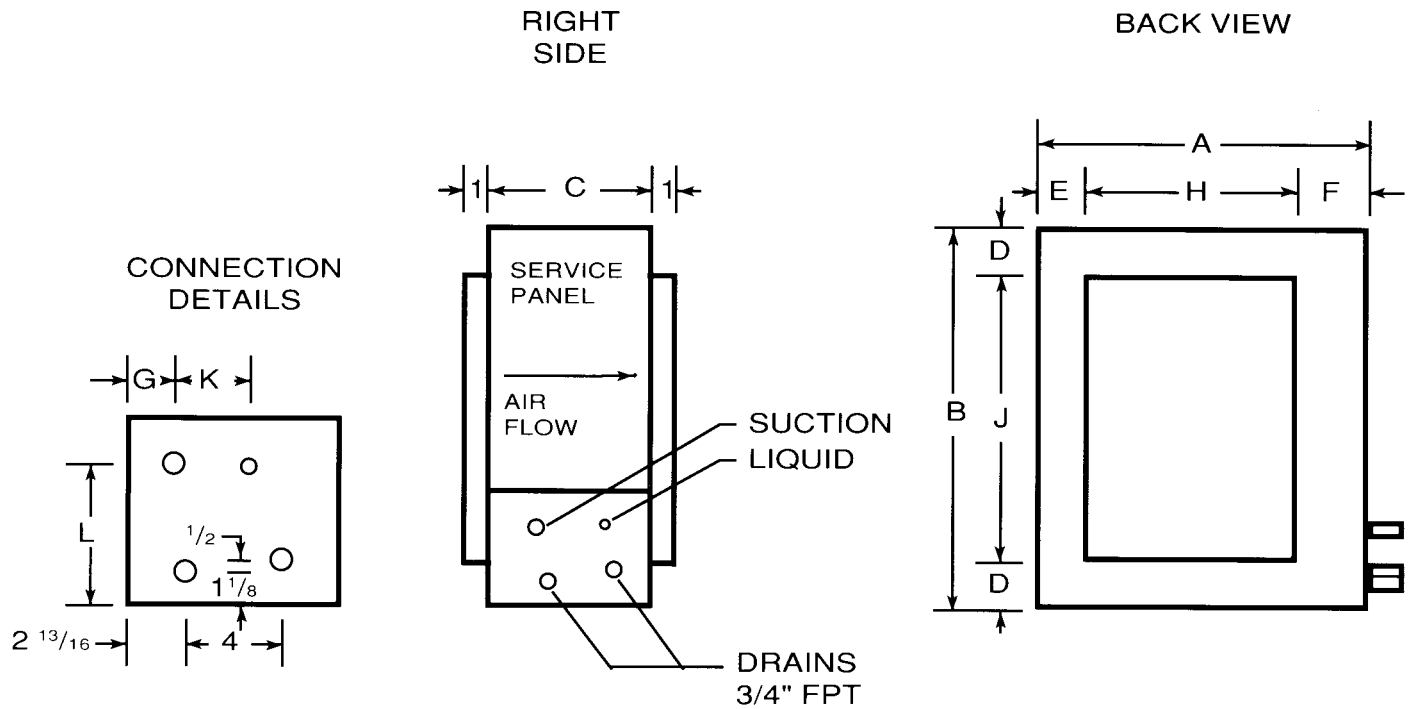


1. Coils are constructed of rifled copper tube and aluminum lanced fin material.
2. Cabinets are fabricated from heavy gauge galvanealed steel, coated inside and out with Magic Aire baked powder enamel coating, then insulated with 3/4"-1.5# fiberglass insulation.
3. Coil connections are RIGHT hand looking in the direction of air flow.
4. HX-2 through HX-5 are stocked with a flow-rater. An optional threaded connection bi-flow TXV is available for field installation or factory installation (allow one week for factory installation).
5. HX-7.5 through HX-10 are stocked with thermal expansion valve mounted with side port distributors. HX-7.5 and 10 are available in either single or dual circuit from stock.
6. **NOTICE:** CONTACT FACTORY FOR COMPATIBILITY WITH SPECIFIC HEAT PUMP MODELS. Flow-rater or bi-flow TXV suitable for heat pump application. Optional heat pump by-pass kit available for HX-7.5 and HX-10 for field mounting.

Product Description

MODEL NUMBER IDENTIFICATION





DIMENSIONS

MODEL	A	B	C	D	E	F	G	H	J	K	L
HX-2430	21.0	24.5	9.5	1.75	1.75	3.25	2.90	16.0	21	3.0	4.8
HX-3648	26.0	24.5	9.5	1.75	1.75	3.25	3.75	21.0	21	2.1	4.8
HX-5	36.0	25.0	9.5	2.00	2.00	4.00	2.90	30.0	21	3.0	5.1
HX-7.5V	53.5	27.5	9.5	1.75	1.75	6.63	1.50	44.5	24	4.0	3.5
HX-10V	56.5	33.5	9.5	1.75	1.75	6.63	1.50	47.5	30	4.0	3.5

SPECIFICATIONS

MODEL	NOM CAP	NOM CFM	FA SQ. FT	LIQUID OD SWT	SUCTION OD SWT	ROWS/FPI	SHIPPING WT.
HX-2430	2.0	800	2.44	.375	.750	2/15	37
HX-2430	2.5	1000	2.44	.375	.750	2/15	37
HX-3648	3.0	1200	3.21	.375	.750	3/11	50
HX-3648	3.5	1400	3.21	.375	.750	3/11	50
HX-3648	4.0	1600	3.21	.375	.750	3/11	50
HX-5	5.0	2000	5.00	.375	.750	2/15	62
HX-7.5V	7.5	3000	7.16	.625	1.125	3/10	130
HX-10V	10	4000	10.22	.625	1.375	3/10	156



HX Series

DIRECT EXPANSION COOLING CAPACITIES

HX-2430

Suct Temp	PD PSI	CFM	85 degF DB/71 degF WB				80 degF DB/67 degF WB				75 degF DB/63 degF WB			
			TTL	SENS	LVG AIR		TTL	SENS	LVG AIR		TTL	SENS	LVG AIR	
			MBH	MBH	DB	WB	MBH	MBH	DB	WB	MBH	MBH	DB	WB
40	8.19	750	41.0	25.0	54.1	54.1	34.4	22.8	51.8	51.8	29.0	20.8	49.3	49.2
		1000	46.5	29.8	57.4	57.1	39.0	27.4	54.7	54.3	32.4	24.6	52.2	51.7
		1165	49.0	32.6	59.1	58.5	41.5	30.0	56.2	55.5	34.6	27.0	53.5	52.7
45	5.67	750	35.4	22.8	56.8	56.8	29.8	20.8	54.2	54.1	19.4	16.6	54.5	54.1
		1000	40.0	27.4	59.6	59.2	33.0	24.8	57.1	56.6	25.4	21.8	54.9	54.3
		1165	42.5	30.2	61.1	60.3	35.2	27.2	58.4	57.5	28.8	24.6	55.4	54.6
50	3.56	750	30.6	21.0	59.0	59.0	19.5	16.7	59.4	59.0	13.9	13.7	58.1	56.8
		1000	33.4	24.8	62.0	61.4	25.6	21.8	59.8	59.1	16.9	16.7	59.6	57.4
		1165	35.6	27.4	63.2	62.3	29.0	25.0	60.2	59.3	18.6	18.4	60.4	57.7

HX-3648

Suct Temp	PD PSI	CFM	85 degF DB/71 degF WB				80 degF DB/67 degF WB				75 degF DB/63 degF WB			
			TTL	SENS	LVG AIR		TTL	SENS	LVG AIR		TTL	SENS	LVG AIR	
			MBH	MBH	DB	WB	MBH	MBH	DB	WB	MBH	MBH	DB	WB
40	8.36	1050	54.5	33.8	55.2	55.2	46.5	30.8	52.9	52.4	35.6	27.0	51.3	51.1
		1400	61.0	40.0	58.5	58.0	51.5	37.0	55.6	55.1	45.0	34.2	52.4	51.8
		1500	62.5	41.5	59.3	58.7	53.0	38.5	56.3	55.6	47.0	36.0	52.8	52.1
45	5.76	1050	50.0	32.2	56.6	56.6	36.6	27.0	56.2	55.9	25.4	22.2	55.4	54.8
		1400	53.0	37.2	60.5	60.0	46.0	34.6	57.2	56.6	29.6	27.0	57.1	55.9
		1500	54.5	38.5	61.2	60.5	48.0	36.4	57.6	56.8	30.6	28.4	57.5	56.2
50	4.10	1050	37.2	27.2	61.0	60.8	25.2	22.4	60.3	59.6	18.4	18.1	59.1	57.2
		1400	47.0	34.8	62.0	61.3	29.4	27.4	61.9	60.6	22.0	21.8	60.6	57.8
		1500	46.5	35.0	63.4	62.2	30.6	28.6	62.4	60.8	23.0	22.6	61.0	57.9



HX Series

DIRECT EXPANSION COOLING CAPACITIES

HX-5

			85 degF DB/71 degF WB				80 degF DB/67 degF WB				75 degF DB/63 degF WB			
Suct Temp	PD PSI	CFM	TTL MBH	SENS MBH	LVG AIR		TTL MBH	SENS MBH	LVG AIR		TTL MBH	SENS MBH	LVG AIR	
					DB	WB			DB	WB			DB	WB
40	15.94	1800	76.0	51.5	58.5	58.4	66.0	47.5	55.5	55.2	55.5	43.5	52.6	52.2
		2000	79.0	54.5	59.7	59.4	68.0	50.5	56.5	56.1	58.0	46.5	53.5	53.0
		2200	81.0	57.5	60.8	60.3	70.0	53.5	57.4	56.8	60.0	49.0	54.3	53.6
45	11.95	1800	68.0	48.5	60.1	59.9	57.0	44.0	57.3	56.9	48.5	40.5	54.1	53.7
		2000	71.0	51.5	61.2	60.7	59.5	47.0	58.2	57.6	50.0	44.0	54.7	54.4
		2200	73.0	54.5	62.1	61.5	61.5	50.0	58.9	58.3	50.5	45.0	56.1	55.2
50	8.08	1800	58.5	44.5	62.0	61.7	49.5	41.0	58.8	58.4	34.2	33.6	57.7	56.6
		2000	61.0	48.0	62.8	62.3	49.5	43.0	60.1	59.4	37.6	37.0	57.9	56.7
		2200	63.0	51.0	63.6	62.9	51.5	46.0	60.7	59.8	40.5	40.0	58.2	56.8

HX-7.5V

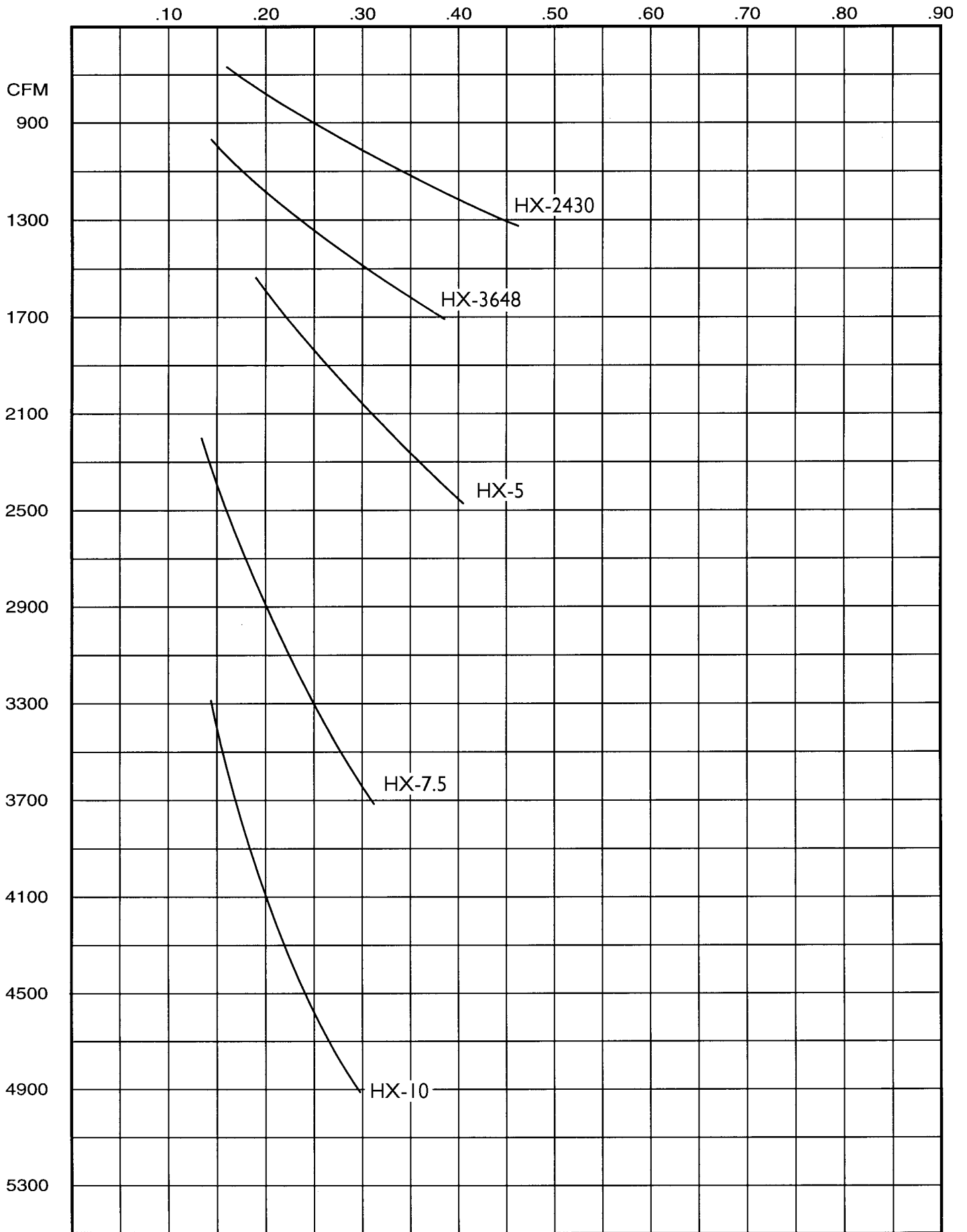
			85 degF DB/71 degF WB				80 degF DB/67 degF WB				75 degF DB/63 degF WB			
Suct Temp	PD PSI	CFM	TTL MBH	SENS MBH	LVG AIR		TTL MBH	SENS MBH	LVG AIR		TTL MBH	SENS MBH	LVG AIR	
					DB	WB			DB	WB			DB	WB
40	8.96	2250	127.0	76.0	53.5	53.5	107.0	70.0	51.2	51.1	90.0	63.5	48.8	48.6
		3000	144.0	91.0	56.9	56.4	123.0	83.0	54.2	53.6	101.0	75.0	51.8	51.1
		3750	158.0	103.0	59.6	58.6	135.0	95.0	56.6	55.5	112.0	86.0	53.8	52.6
45	6.34	2250	110.0	70.0	56.2	56.1	93.0	64.0	53.6	53.4	66.0	53.0	53.2	52.8
		3000	126.0	84.0	59.1	58.5	104.0	75.0	56.7	55.9	83.0	67.0	54.2	53.4
		3750	139.0	96.0	61.4	60.3	114.0	87.0	58.6	57.4	96.0	79.0	55.5	54.3
50	4.08	2250	96.0	64.0	58.5	58.4	66.0	53.0	58.1	57.7	47.5	44.0	56.8	55.9
		3000	106.0	76.0	61.6	60.8	84.0	68.0	59.1	58.3	56.5	54.0	58.3	56.7
		3750	116.0	87.0	63.4	62.2	96.0	80.0	60.3	59.0	65.0	64.0	59.2	57.2

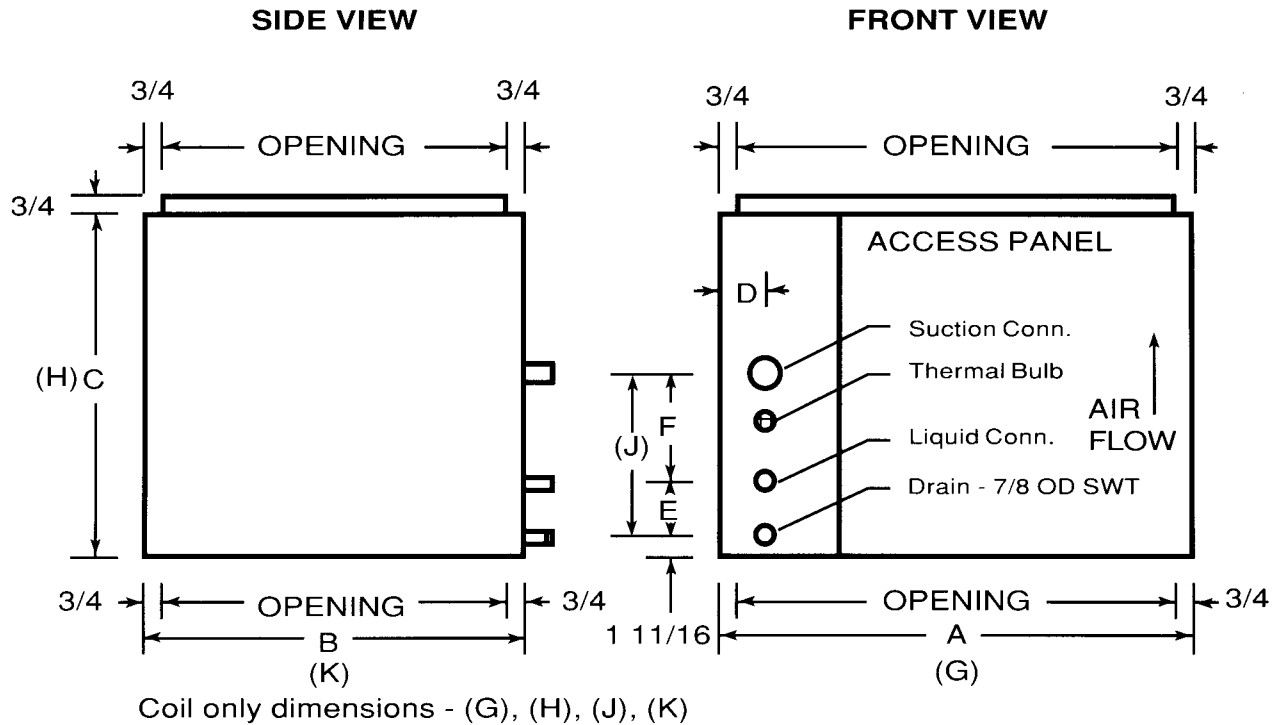
HX-10V

			85 degF DB/71 degF WB				80 degF DB/67 degF WB				75 degF DB/63 degF WB			
Suct Temp	PD PSI	CFM	TTL MBH	SENS MBH	LVG AIR		TTL MBH	SENS MBH	LVG AIR		TTL MBH	SENS MBH	LVG AIR	
					DB	WB			DB	WB			DB	WB
40	9.08	3000	175.0	105.0	52.7	52.7	146.0	95.0	50.6	50.6	124.0	87.0	48.1	48.0
		4000	199.0	124.0	56.2	55.9	169.0	114.0	53.6	53.1	140.0	103.0	51.2	50.6
		5000	219.0	142.0	58.8	58.0	186.0	130.0	55.9	55.0	155.0	118.0	53.2	52.2
45	6.45	3000	152.0	95.0	55.6	55.6	129.0	87.0	53.0	52.9	94.0	73.0	52.4	52.1
		4000	175.0	115.0	58.5	58.0	144.0	103.0	56.1	55.5	116.0	92.0	53.6	52.9
		5000	192.0	131.0	60.8	59.8	159.0	119.0	58.0	57.0	125.0	105.0	55.5	54.4
50	4.16	3000	132.0	87.0	58.0	57.9	94.0	73.0	57.4	57.0	65.0	60.5	56.3	55.6
		4000	146.0	104.0	61.0	60.4	118.0	93.0	58.5	57.8	78.0	74.0	57.8	56.5
		5000	161.0	119.0	62.9	61.8	126.0	106.0	60.4	59.2	93.0	89.0	58.5	56.8

AIR LOSS FOR HX SERIES DUCT COIL

STATIC PRESSURE (INCHES OF WATER)





DIMENSIONS

MODEL	A	B	C	D	E	F	G	H	J	K
VX-2V	22.00	22	15.25	4.63	2.63	8.00	18.38	11.50	8.81	21.75
VX-3V	22.00	22	15.25	4.63	2.63	8.00	18.38	12.00	8.81	21.75
VX-4V	24.88	22	19.50	4.50	3.50	8.63	22.75	16.25	12.56	21.75
VX-5V	28.38	22	19.50	4.25	4.00	9.63	26.63	16.50	13.63	21.38
VX-7.5V	38.88	22	19.50	2.00	2.50	11.75	36.63	16.50	14.56	21.38
VX-10V	51.50	22	19.50	2.50	3.75	9.44	48.63	16.50	13.50	21.38
VX-15V	71.88	21	20.50	3.75	10.94	9.56	69.75	15.63	13.25	20.50

SPECIFICATIONS

MODEL	NOM CAP	NOM CFM	FA SQ. FT	LIQUID OD SWT	SUCTION OD SWT	ROWS/FPI	SHIPPING WT.	
							COIL ONLY	W/CAB
VX-2V	2.0	800	3.00	.375	.750	2/10	31	47
VX-3V	3.0	1200	3.00	.375	.750	3/10	37	54
VX-4V	4.0	1600	4.00	.500	.875	3/10	48	69
VX-5V	5.0	2000	5.11	.500	1.125	3/10	56	81
VX-7.5	7.5	3000	7.34	.625	1.125	3/10	76	119
VX-7.5 DUAL				(2) .500	(2) .875	3/10	76	119
VX-10	10	4000	10.00	.625	1.375	3/10	103	162
VX-10 DUAL				(2) .500	(2) 1.125	3/10	103	162
VX-15	15	6000	14.20	.875	1.625	3/10	—	171
VX-15 DUAL				(2) .625	(2) 1.125	3/10	—	171



VX Series

DIRECT EXPANSION COOLING CAPACITIES

VX-2V

			85 degF DB/71 degF WB				80 degF DB/67 degF WB				75 degF DB/63 degF WB			
Suct Temp	PD PSI	CFM	TTL MBH	SENS MBH	LVG AIR		TTL MBH	SENS MBH	LVG AIR		TTL MBH	SENS MBH	LVG AIR	
					DB	WB			DB	WB			DB	WB
40	6.52	600	33.4	20.0	54.0	53.7	28.6	18.5	51.5	51.1	21.2	15.4	51.2	50.5
		800	38.5	24.0	57.3	56.4	32.6	21.8	54.8	53.7	26.8	19.7	52.3	51.2
		1000	42.5	27.2	59.9	58.4	36.0	24.8	57.0	55.5	31.0	23.0	53.8	52.2
45	4.47	600	29.6	18.6	56.4	56.0	21.6	15.5	56.1	55.4	15.9	13.1	54.8	53.9
		800	33.4	21.8	59.8	58.7	27.4	19.7	57.2	56.0	18.6	16.0	56.5	55.1
		1000	36.8	24.8	62.0	60.3	31.8	23.2	58.6	57.0	21.2	18.7	57.7	55.8
50	2.87	600	22.0	15.5	61.1	60.3	15.8	13.2	59.6	58.8	11.5	11.0	58.0	56.6
		800	28.0	19.7	62.2	60.9	18.6	16.1	61.4	59.9	13.5	13.3	59.6	57.4
		1000	32.4	23.2	63.5	61.8	21.2	18.8	62.6	60.5	15.6	15.4	60.8	57.8

VX-3V

			85 degF DB/71 degF WB				80 degF DB/67 degF WB				75 degF DB/63 degF WB			
Suct Temp	PD PSI	CFM	TTL MBH	SENS MBH	LVG AIR		TTL MBH	SENS MBH	LVG AIR		TTL MBH	SENS MBH	LVG AIR	
					DB	WB			DB	WB			DB	WB
40	9.19	900	51.5	31.0	53.2	53.2	44.0	28.6	50.6	50.6	33.6	24.4	49.9	49.7
		1200	58.0	36.8	56.7	56.3	49.5	33.6	54.1	53.5	41.5	30.6	51.4	50.8
		1500	63.5	41.5	59.4	58.5	54.0	38.0	56.4	55.4	47.0	35.8	53.0	52.1
45	6.46	900	46.0	28.8	55.5	55.5	34.6	24.6	54.8	54.5	25.2	20.6	53.8	53.3
		1200	51.0	33.8	59.0	58.4	42.5	30.8	56.3	55.6	29.4	25.2	55.6	54.6
		1500	55.5	38.5	61.3	60.2	48.5	36.0	57.8	56.8	34.8	30.2	56.4	55.1
50	4.35	900	35.4	24.6	59.7	59.5	25.4	20.6	58.7	58.2	18.5	17.5	57.0	56.1
		1200	43.5	31.0	61.1	60.4	29.6	25.4	60.4	59.4	22.0	21.4	58.5	56.9
		1500	49.5	36.2	62.7	61.5	35.0	30.4	61.3	59.8	24.6	24.2	60.1	57.6

VX-4V

			85 degF DB/71 degF WB				80 degF DB/67 degF WB				75 degF DB/63 degF WB			
Suct Temp	PD PSI	CFM	TTL MBH	SENS MBH	LVG AIR		TTL MBH	SENS MBH	LVG AIR		TTL MBH	SENS MBH	LVG AIR	
					DB	WB			DB	WB			DB	WB
40	13.02	1200	67.0	40.5	53.7	53.7	56.5	37.2	51.3	51.3	48.5	34.2	48.6	48.5
		1600	75.0	48.0	57.2	56.8	64.0	44.0	54.4	53.9	53.5	40.0	51.8	51.2
		2000	82.0	54.0	59.9	58.9	70.0	50.5	56.7	55.8	59.0	46.0	53.8	52.8
45	9.39	1200	58.5	37.2	56.3	56.2	47.5	33.4	54.2	54.0	37.4	29.2	52.5	52.2
		1600	66.0	44.5	59.3	58.7	55.0	40.0	56.7	56.0	45.0	36.6	53.9	53.2
		2000	72.0	50.5	61.5	60.5	60.5	46.0	58.6	57.5	50.0	42.5	55.4	54.5
50	6.20	1200	49.0	33.6	59.1	58.9	37.5	29.4	57.4	57.1	25.8	24.2	56.4	55.7
		1600	56.0	40.5	61.5	60.8	46.0	36.8	58.8	58.0	30.8	29.4	58.0	56.6
		2000	61.5	46.5	63.4	62.3	48.5	41.5	60.8	59.5	37.0	35.8	58.5	56.8



VX Series

DIRECT EXPANSION COOLING CAPACITIES

VX-5V

			85 degF DB/71 degF WB				80 degF DB/67 degF WB				75 degF DB/63 degF WB			
Suct Temp	PD PSI	CFM	TTL MBH	SENS MBH	LVG AIR		TTL MBH	SENS MBH	LVG AIR		TTL MBH	SENS MBH	LVG AIR	
					DB	WB			DB	WB			DB	WB
40	10.41	1500	88.0	52.5	52.6	52.6	74.0	48.0	50.5	50.5	62.5	43.5	48.0	47.9
		2000	100.0	62.5	56.1	55.7	85.0	57.5	53.5	53.0	70.0	51.5	51.1	50.6
		2500	110.0	71.0	58.7	57.9	93.0	65.0	55.8	54.9	77.0	59.0	53.1	52.2
45	7.39	1500	76.0	48.0	55.5	55.5	64.0	43.5	53.0	52.8	47.0	36.6	52.4	52.1
		2000	88.0	57.5	58.4	58.0	72.0	51.5	56.1	55.5	58.5	46.0	53.6	52.9
		2500	96.0	65.0	60.7	59.7	79.0	59.5	58.0	57.0	63.0	52.5	55.5	54.4
50	4.78	1500	63.5	42.5	58.6	58.5	47.5	36.8	57.3	57.0	32.8	30.4	56.3	55.6
		2000	73.0	52.0	61.0	60.4	59.0	46.5	58.5	57.7	39.0	37.2	57.8	56.4
		2500	81.0	59.5	62.9	61.8	63.5	53.0	60.4	59.2	46.5	44.5	58.5	56.8

VX-7.5V

			85 degF DB/71 degF WB				80 degF DB/67 degF WB				75 degF DB/63 degF WB			
Suct Temp	PD PSI	CFM	TTL MBH	SENS MBH	LVG AIR		TTL MBH	SENS MBH	LVG AIR		TTL MBH	SENS MBH	LVG AIR	
					DB	WB			DB	WB			DB	WB
40	9.88	2250	130.0	78.0	53.0	53.0	108.0	71.0	50.9	50.8	92.0	64.0	48.4	48.2
		3000	147.0	92.0	56.5	56.1	125.0	84.0	53.9	53.4	103.0	76.0	51.5	50.9
		3750	161.0	104.0	59.2	58.3	137.0	96.0	56.2	55.2	114.0	87.0	53.5	52.4
45	6.99	2250	112.0	71.0	55.9	55.9	95.0	65.0	53.3	53.1	68.0	53.5	52.9	52.5
		3000	129.0	85.0	58.8	58.3	106.0	76.0	56.4	55.7	85.0	68.0	54.0	53.2
		3750	141.0	97.0	61.1	60.0	116.0	87.0	58.4	57.2	97.0	80.0	55.3	54.1
50	4.49	2250	97.0	65.0	58.3	58.1	68.0	54.0	57.8	57.4	48.0	44.5	56.6	55.8
		3000	108.0	77.0	61.3	60.6	86.0	68.0	58.9	58.1	57.0	55.0	58.1	56.6
		3750	118.0	88.0	63.2	62.0	98.0	80.0	60.1	58.9	67.0	65.0	58.9	57.0

VX-10V

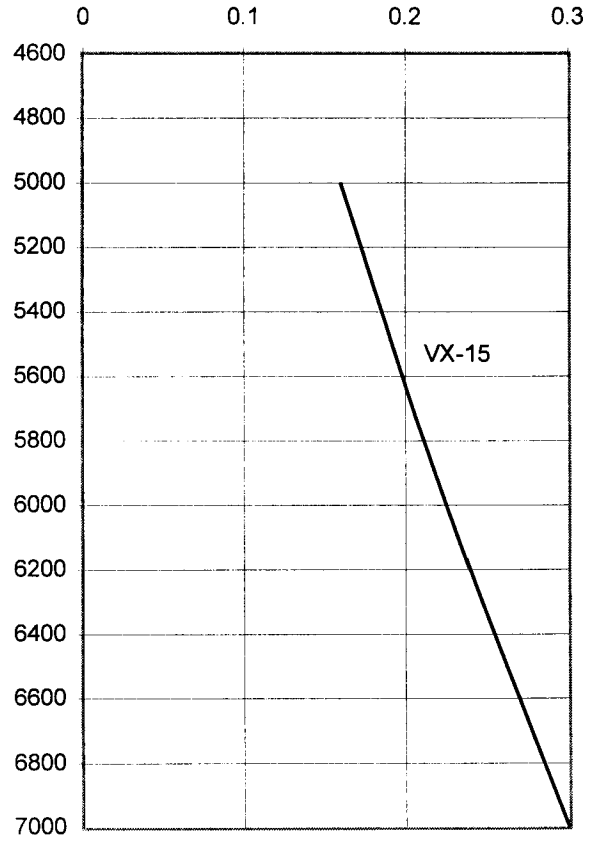
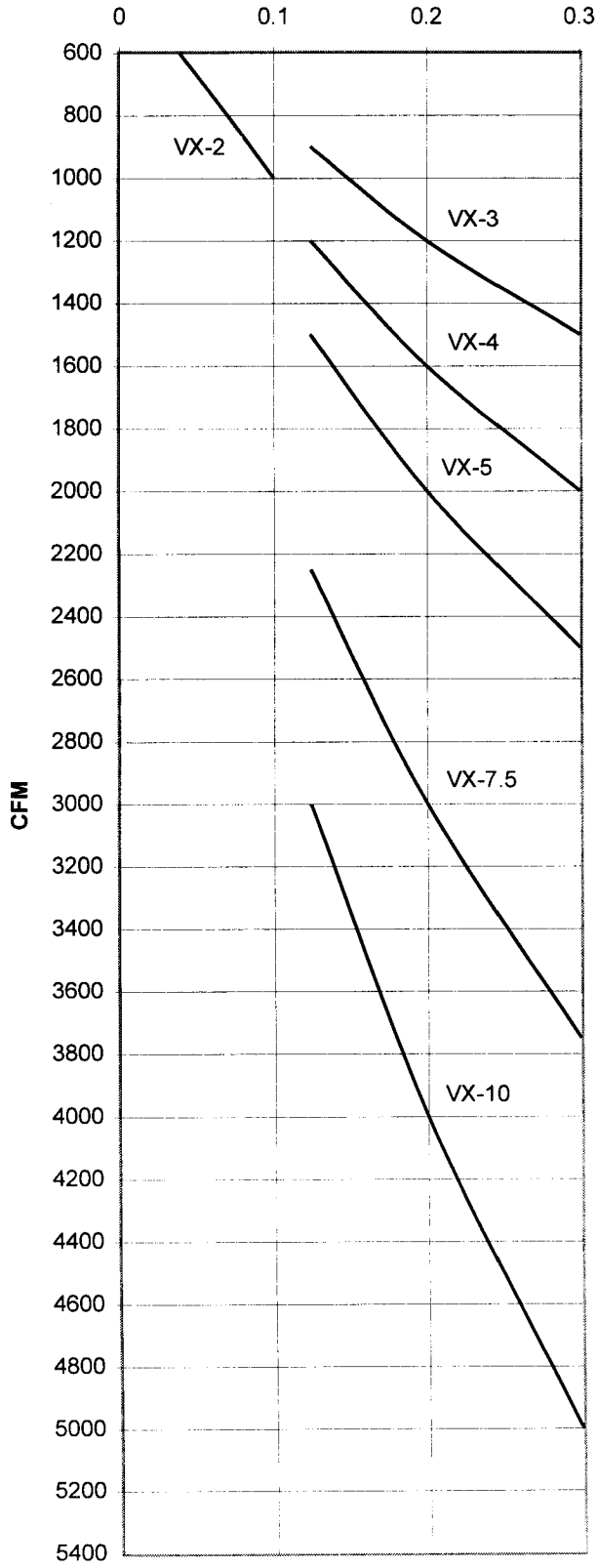
			85 degF DB/71 degF WB				80 degF DB/67 degF WB				75 degF DB/63 degF WB			
Suct Temp	PD PSI	CFM	TTL MBH	SENS MBH	LVG AIR		TTL MBH	SENS MBH	LVG AIR		TTL MBH	SENS MBH	LVG AIR	
					DB	WB			DB	WB			DB	WB
40	9.18	3000	177.0	105.0	52.5	52.5	148.0	96.0	50.4	50.4	125.0	87.0	48.0	47.9
		4000	202.0	126.0	55.9	55.6	171.0	115.0	53.4	52.9	141.0	103.0	51.1	50.5
		5000	222.0	143.0	58.6	57.8	189.0	131.0	55.8	54.8	156.0	118.0	53.1	52.1
45	6.45	3000	153.0	96.0	55.5	55.5	129.0	87.0	53.0	52.8	93.0	73.0	52.5	52.1
		4000	176.0	115.0	58.4	57.9	144.0	103.0	56.1	55.4	117.0	92.0	53.6	52.9
		5000	194.0	131.0	60.7	59.7	160.0	119.0	58.0	56.9	126.0	105.0	55.6	54.4
50	4.12	3000	133.0	88.0	57.9	57.8	94.0	73.0	57.5	57.1	65.0	60.5	56.4	55.7
		4000	147.0	104.0	61.0	60.3	118.0	93.0	58.5	57.8	77.0	74.0	57.9	56.5
		5000	162.0	119.0	62.9	61.7	127.0	106.0	60.4	59.2	92.0	88.0	58.6	56.8

VX-15V

			85 degF DB/71 degF WB				80 degF DB/67 degF WB				75 degF DB/63 degF WB			
Suct Temp	PD PSI	CFM	TTL MBH	SENS MBH	LVG AIR		TTL MBH	SENS MBH	LVG AIR		TTL MBH	SENS MBH	LVG AIR	
					DB	WB			DB	WB			DB	WB
40	16.65	5000	235.0	151.0	57.1	56.9	202.0	139.0	54.2	53.8	170.0	127.0	51.5	51.1
		6000	251.0	167.0	59.3	58.7	216.0	155.0	56.1	55.4	183.0	141.0	53.2	52.4
		7000	264.0	182.0	61.0	60.0	228.0	169.0	57.7	56.7	194.0	155.0	54.5	53.5
45	12.64	5000	210.0	141.0	58.9	58.6	175.0	128.0	56.3	55.8	141.0	115.0	53.8	53.3
		6000	225.0	157.0	60.8	60.1	189.0	143.0	57.9	57.1	152.0	128.0	55.2	54.3
		7000	237.0	172.0	62.3	61.3	200.0	157.0	59.2	58.1	162.0	142.0	56.3	55.2
50	8.70	5000	180.0	130.0	61.0	60.6	143.0	116.0	58.6	58.1	110.0	100.0	56.4	55.6
		6000	194.0	145.0	62.6	61.8	155.0	130.0	59.9	59.0	123.0	115.0	57.2	56.1
		7000	205.0	160.0	63.9	62.7	164.0	144.0	61.0	59.8	132.0	129.0	58.0	56.7

AIR FRICTION LOSS FOR VX SERIES

STATIC PRESSURE IN INCHES OF WATER



DATA BASED ON: 80°/67° EAT, 45° SST

Magic Aire®

UNITED ELECTRIC COMPANY, L.P.

501 Galveston St. • Wichita Falls, Texas 76301 • 940-397-2100 • Fax 940-397-2166