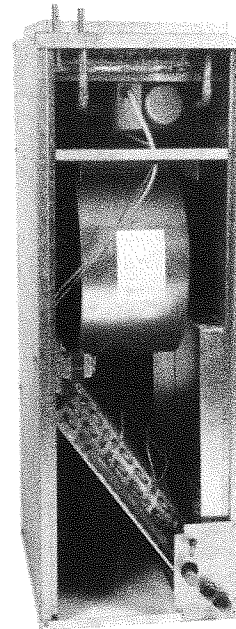


DUX/DUP-HW Series DX Cooling with Hydronic Heat

1.5 Thru 5.0 Ton Sizes



(Pictured with optional pump assembly installed)

GENERAL CONSTRUCTION. All metal parts are fabricated from heavy galvanized steel for long life and durability. All interior surfaces are fully insulated with material to comply with NFPA 90A and 90B.

ACCESS PANEL. Gives easy access to the fan, motor, coil and drain pan.

DRAIN PAN. All corners and fitting connections, primary and secondary, are brazed. **Important: Must specify at time of order whether unit is to be vertical/horizontal or combination discharge (see list prices for details).**

CONTROLS. All electrical components, 24 volt 40 VA transformer and relays, are installed and wired at the factory.

COIL CONSTRUCTION. Fitted copper tubes mechanically bonded to aluminum raised lance fins. All units have flowrate metering devices allowing for heat pump operation when required.

FANS. Double inlet, forward curved, steel wheels are mounted directly on the motor shaft. Balanced for quiet, vibration free operation.

FILTER. Built-in provisions for filter when required (to be furnished by others).

FACTORY TESTING. Each unit is given both a dielectric test and a run test before shipment.

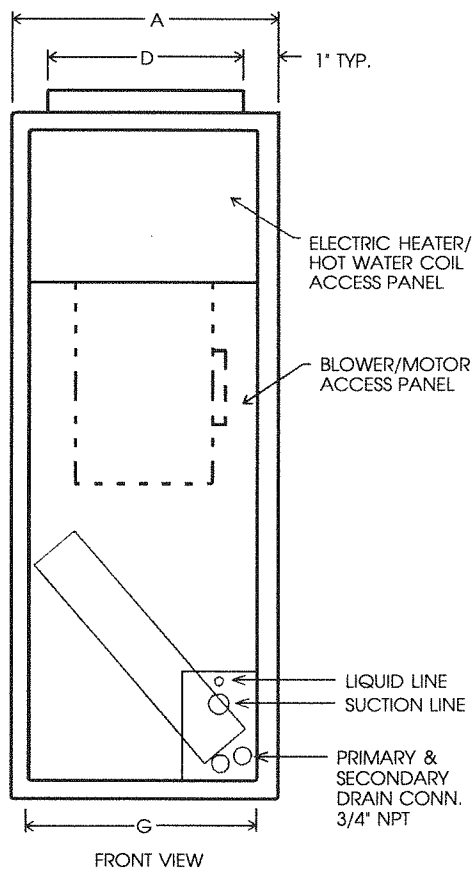
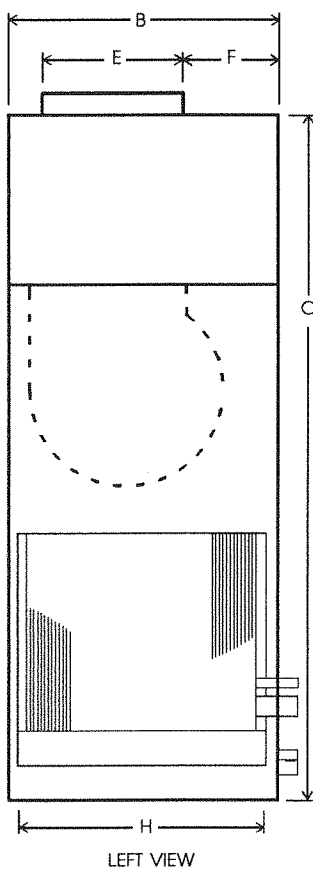
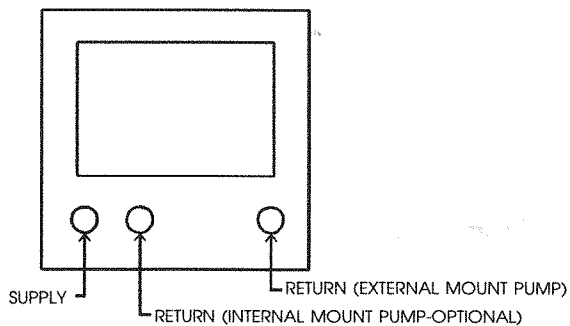
ETL LISTING. Units meet or exceed nationally recognized standards for safety and dependability.

MOTOR. Two speed 115/1 with thermal overload protection. Optional motor voltages available — contact factory. Large oil reservoirs assure long bearing life and minimum maintenance. Runs quietly in resilient rubber mounts. High efficiency models for reduced operating costs.

HOT WATER COIL. Copper tubes mechanically bonded to aluminum fins. Optional pump (115/1) assembly is provided for field installation as standard and can be installed internally in the unit cabinet at an additional charge.

501 Galveston • P.O. Box 5148, Wichita Falls, Texas 76307 • (817) 767-8333 • Fax: (817) 766-3240

DX COIL CONNECTION		
MODEL	LIQ	SUCT
018-048	3/8	7/8
060	3/8	1 1/8



MODEL	A	B	C	D	E	F	G	H	FILTER
024	12 5/8	22 1/8	44 1/4	10 5/8	17 1/2	3 1/2	11 7/8	20 1/8	12 X 20 X 1
030	15 5/8	22 1/8	44 1/4	13 5/8	17 1/2	3 1/2	14 7/8	20 1/8	16 X 20 X 1
036-042	19 3/4	22 1/8	47 1/4	17 3/4	17 1/2	3 1/2	17 3/4	20 1/8	20 X 20 X 1
048-060	22	24	54 5/8	20	17 1/2	3 1/2	20	22	24 X 24 X 1

HOT WATER CONNECTIONS		
MODEL	SUPPLY	RETURN
024	5/8"	5/8"
030	5/8"	5/8"
036-042	7/8"	7/8"
048	7/8"	7/8"
060	7/8"	7/8"

Vertical or Horizontal Fan Coil Units

MODEL NO.	COIL DRAIN CONN. FPT	REFRIGERANT CONNECTIONS		APPROXIMATE SHIPPING WEIGHT	CAPACITY (TONS) NOMINAL COOLING
		LIQ.	SUCT.		
018-DUX	3/4	3/8	7/8	103	1 1/2
024-DUX	3/4	3/8	7/8	104	2
030-DUX	3/4	3/8	7/8	106	2 1/2
036-DUX	3/4	3/8	7/8	117	3
042-DUX	3/4	3/8	7/8	114	3 1/2
048-DUX	3/4	3/8	7/8	148	4
060-DUX	3/4	3/8	1 1/8	158	5

BLOWER PERFORMANCE

MODEL	MOTOR SPEED	CFM DELIVERED AGAINST EXTERNAL STATIC PRESSURE H ₂ O				
		0.1	0.2	0.3	0.4	0.5
018-DUX	HIGH	720	718	710	799	680
	LOW	680	660	630	610	600
024-DUX	HIGH	1000	990	950	970	920
	LOW	780	770	750	720	700
030-DUX	HIGH	1010	1000	990	970	950
	LOW	775	770	770	750	730
036-DUX	HIGH	1380	1330	1290	1250	1190
	LOW	1025	1000	990	980	970
042-DUX	HIGH	1400	1390	1360	1340	1320
	LOW	1030	1070	990	980	970
048-DUX	HIGH	1970	1910	1840	1770	1680
	LOW	1840	1780	1710	1650	1580
060-DUX	HIGH	2100	2090	2085	2050	2000
	LOW	1790	1760	1730	1710	1690

DRY COIL W/FILTER IN PLACE
SCFM CORRECTION FOR WET COIL - 4%

PERFORMANCE DATA 2, 3, AND 4 ROW HOT WATER COILS							
	MODEL	NOM. COOL BTUH	GPM (HEATING)	P.D. FT.	HEATING BTU/HR AT ENT. WATER TEMP. (3)		
					120°F	150°F	180°F
2 ROW	018DUX-2HW	18000	3	9.90	14300	23000	31800
			2	4.50	13200	21400	29600
			1	1.20	10700	17400	24200
	024DUX-2HW	24000	3	9.90	16200	26000	36200
			2	4.60	14800	23800	33200
			1	1.20	11700	19000	26400
	030DUX-2HW	30000	3	12.90	20400	33000	45500
			2	5.90	18400	29600	41000
			1	1.60	14000	22600	31400
	036DUX-2HW	36000	3	14.80	23400	37500	52000
			2	6.80	20800	33600	46500
			1	1.90	15400	25000	34600
3 ROW	018DUX-3HW	18000	3	4.90	17600	28400	39000
			2	2.30	16000	25800	35800
			1	0.60	12400	20200	28200
	024DUX-3HW	24000	3	4.90	20000	32400	45000
			2	2.30	18000	29200	40500
			1	0.60	13500	22000	30800
	030DUX-3HW	30000	3	6.30	25000	40000	56000
			2	2.90	22000	35600	49000
			1	0.80	15800	25800	35800
	036DUX-3HW	36000	4	12.40	30800	49500	68000
			3	7.10	28600	46000	63500
			1	0.90	17200	28000	38500
042DUX-3HW	42000	4	11.60	33000	53000	73000	
		3	6.70	30400	49000	67000	
		2	3.10	26000	42000	58000	
048DUX-3HW	48000	4	13.70	37500	61000	84000	
		3	7.90	34400	55500	77000	
		2	3.70	29000	46500	64000	
060DUX-3HW	60000	4	13.70	41000	66000	92000	
		3	7.90	37200	60000	83000	
		2	3.70	30800	49500	68000	
4 ROW	042DUX-4HW	42000	4	6.80	37400	60000	83000
			3	3.90	34000	55000	76000
			2	1.80	28600	46000	64000
	048DUX-4HW	48000	5	12.20	45500	73000	101000
			4	8.00	42500	68000	94000
			2	2.20	31600	50500	70000
	060DUX-4HW	60000	5	12.30	50000	80000	111000
			4	8.00	46500	75000	103000
			2	2.20	33400	54000	74000

- (1) MOTORS ARE 120V/60 HZ.
(2) UNITS INCLUDE METERING DEVICE,
SWEAT CONNECTIONS, AND
RELAY TRANSFORMER.
(3) HEAT BTUH AT 70° ENTERING AIR TEMP.
(4) HEATING OUTPUT WILL NOT EXCEED
OUTPUT OF WATER HEATER.

Magic Aire reserves the right to discontinue or change at any time specifications or designs without notice and without incurring obligation.