



DP PARTS REFERENCE GUIDE FOR CURRENT AND VINTAGE UNITS

HAND CONNECTION	page 2
DH / DHA UNITS	page 3
DV UNITS	page 4
BH / HBA UNITS - Blowers etc	page 5
BH / HBA UNITS - Coils	page 6
BV UNITS	page 8
BM / BMA UNITS	page 9
BR / BRC UNITS	page 10
DU-B UNITS	page 12
CH*/CEW-A Sizes 006 thru 036 UNITS	page 13
KV Units / HX, HW, VX, VW DRAINPANS	page 17
REPLACEMENT BELT DRIVE MOTORS	page 18
REPLACEMENT DRIVES / TOUCH UP PAINT	page 19
REPLACEMENT FILTERS	page 20
EXPANSION VALVES	page 21
Blowers prior to 1993 - Belt Drive	page 22
REPLACEMENT BELTS	page 23
STARTER/OVERLOAD	page 24
For newer models using our RPL System	
HBB / BVE / BMB / BRD	page 26
DHB / DVB / DUC / CHA / FF / FS	
MAP FOR FREIGHT CHARGES	page 27
NON-SUPPORTED PRODUCTS	page 28
UNIT CROSS REFERENCE	page 29

SEND ORDERS TO:

purchaseorders@magicaire.com

Lead Time 3 Days Except Where Noted

Items marked with "**SD**" ship same day if order received by 11:00am CST

All Parts Orders ship 2nd day Air unless Ground noted on Purchase Order

Orders Subject to \$50 net minimum

In the event of a stock outage, same day parts will ship in 3 days. Please confirm ship date at time of order by checking the automatic order acknowledgment or online order status.

Vendor Supply Shortage on TXVs has resulted in suspension of factory installed TXVs on coils. Replacement TXVs currently have a 10 month lead time. CONTACT FACTORY FOR COILS LESS TXV

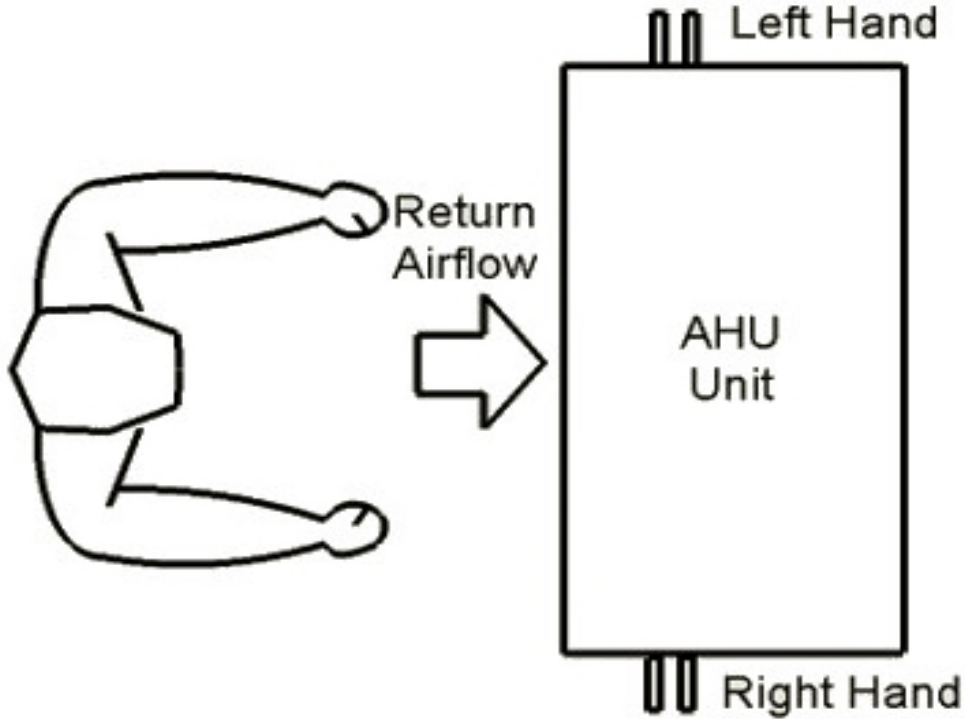
FOR QUESTIONS PLEASE CONTACT customer.service@magicaire.com

SUBJECT TO STANDARD MAGIC AIRE TERMS AND CONDITIONS
United Electric Company 501 GALVESTON STREET, WICHITA FALLS, TEXAS 76301

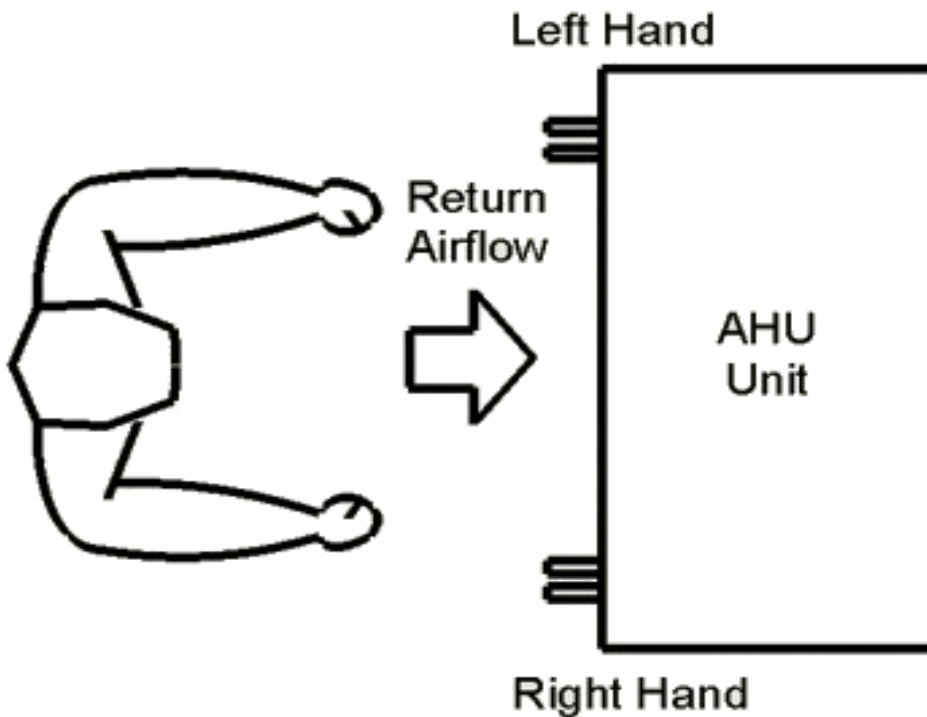
Magic Aire defines hand connection by facing the filter section, air hitting the back of the head, left hand is on the left, right hand is on the right.

Note: This definition is specific to Magic Aire. Hand connection varies by manufacturer.

Horizontal AHU – Top View



VERTICAL AHU – Top View





Part Number	Description	FITS SERIES	List Price	
373-230043-001	DHW-400 WATER COIL	DH / DHA	588	10 days
373-230042-001	DHW-600 WATER COIL	DH / DHA	589	10 days
373-230041-001	DHW-800 WATER COIL	DH / DHA	670	10 days
373-230040-001	DHW-1000 WATER COIL	DH / DHA	805	10 days
** 758000	400-DH/DHA04/DHB04 HOT WATER COIL ACCESSORY	DH / DHA/ DHB	886	25 days
** 758100	600-DH/DHA06/DHB06 HOT WATER COIL ACCESSORY	DH / DHA/ DHB	1113	25 days
** 758200	800-DH/DHA08/DHB08 HOT WATER COIL ACCESSORY	DH / DHA/ DHB	1017	25 days
** 758300	1000-DH/DHA10/DHB10 HOT WATER COIL ACCESSORY	DH / DHA/ DHB	1136	25 days
373-240016-001	DHX-400 COIL - NO TXV	DH / DHA	704	10 days
373-240017-001	DHX-600 COIL - NO TXV	DH / DHA	640	10 days
373-240018-001	DHX-800 COIL - NO TXV	DH / DHA	786	10 days
373-240012-001	DHX-1000 COIL NO TXV	DH / DHA	820	10 days
373-260841-000	DHX-400 COIL - NO TXV - Phenolic Coated	DH / DHA	1086	15 Days
373-261083-000	DHX-600 COIL - NO TXV - Phenolic Coated	DH / DHA	1022	15 Days
373-240018-101	DHX-800 COIL - NO TXV - Phenolic Coated	DH / DHA	1168	15 Days
373-240012-101	DHX-1000 COIL - NO TXV - Phenolic Coated	DH / DHA	1202	15 Days
076-000225-000	DHW/DHX-400 DRAINPAN	DH / DHA	172	
076-000223-000	DHW/DHX-600 DRAINPAN	DH / DHA	188	
076-000221-000	DHW/DHX-800 DRAINPAN	DH / DHA	202	
076-000219-000	DHW/DHX-1000 DRAINPAN	DH / DHA	290	
102935	DHW/DHX-400 115V MOTOR	DH / DHA	464	SD
102940	DHW/DHX-600 115V MOTOR	DH / DHA	473	SD
102945	DHW/DHX-800 115V MOTOR	DH / DHA	504	SD
102950	DHW/DHX-1000 115V MOTOR	DH / DHA	551	SD
* N/A	DHW/DHX-400 277V MOTOR	DH / DHA	N/A	
* N/A	DHW/DHX-600 277V MOTOR	DH / DHA	N/A	
* 702964	DHW/DHX-800 277V MOTOR	DH / DHA	964	SD
* N/A	DHW/DHX-1000 277V MOTOR (702966)	DH / DHA	N/A	
* 010-100013-000	DHW/DHX-400 208/230V MOTOR	DH / DHA	611	SD
* 010-100014-000	DHW/DHX-600 208/230V MOTOR	DH / DHA	639	SD
* 010-100015-000	DHW/DHX-800 208/230V MOTOR	DH / DHA	671	SD
102984	DHW/DHX-1000 208/230V MOTOR	DH / DHA	711	SD
702952	MOTOR MOUNT FOR 208/230 & 277 UNITS		95	SD
112028	Capacitor - 5MFD for Motors 102935, 102940, 702962, 010-100014-000, 702964, 702966	DH / DHA	22	SD
010-170019-000	Capacitor - 3MFD for Motors 010-100013-000	DH / DHA	71	SD
112029	Capacitor - 7.5MFD for Motors 102945, 102950	DH / DHA	26	SD
112030	Capacitor - 10MFD for Motors 010-100015-000	DH / DHA	28	SD
106899	Capacitor - 15MFD for Motor 102984	DH / DHA	37	SD
010-120019-001	DH*-400 / DHB04 BLOWER	DH / DHA	254	SD
010-120020-001	DH*-600 / DHB06 BLOWER	DH / DHA	266	SD
010-120020-001	DH*-800 / DHB08 BLOWER	DH / DHA	266	SD
010-120021-001	DH*-1000 / DHB10 BLOWER	DH / DHA	333	SD

* These Motors require the use of a separate motor mount, part number 702952

** DH hot water coil accessory has cabinet that mounts on the exterior of the fan coil unit.



DIRECT DRIVE VERTICAL AIR HANDLER

Part Number	Description	FITS SERIES	List Price	
376-000106-000	DVW-400 WATER COIL LH	DV	540	10 days
376-000105-000	DVW-400 WATER COIL RH	DV	656	10 days
376-000112-000	DVW-600 WATER COIL LH	DV	699	10 days
376-000111-000	DVW-600 WATER COIL RH	DV	761	10 days
376-000118-000	DVW-800 WATER COIL LH	DV	805	10 days
376-000117-000	DVW-800 WATER COIL RH	DV	889	10 days
376-000124-000	DVW-1000 WATER COIL LH	DV	994	10 days
376-000123-000	DVW-1000 WATER COIL RH	DV	1042	10 days
** 473-270006-001	SIZE 04/06/08 (400/600/800 CFM) HW COIL ACCESSORY - LH	DV/ DVA/ DVB	984	20 Days
** 473-270006-002	SIZE 04/06/08 (400/600/800 CFM) HW COIL ACCESSORY - RH	DV / DVA/ DVB	984	20 Days
** 473-270007-001	SIZE 10 (1000 CFM) HW COIL ACCESSORY - LH	DV / DVA/ DVB	997	20 Days
** 473-270007-002	SIZE 10 (1000 CFM) HW COIL ACCESSORY - RH	DV / DVA/ DVB	997	20 Days
375-000104-001	DVX-400 R22 NO TXV LH	DV	837	10 days
376-000103-001	DVX-400 R22 NO TXV RH	DV	713	10 days
375-000108-001	DVX-600 R22 NO TXV LH	DV	969	10 days
376-000107-001	DVX-600 R22 NO TXV RH	DV	825	10 days
376-000114-001	DVX-800 R22 NO TXV LH	DV	1042	10 days
376-000113-001	DVX-800 R22 NO TXV RH	DV	935	10 days
376-000120-001	DVX-1000 R22 NO TXV LH	DV	1077	10 days
376-000119-001	DVX-1000 R22 NO TXV RH	DV	1077	10 days
376-000104-101	DVX-400 - NO TXV LH - Phenolic Coated	DV	1110	15 Days
376-000103-101	DVX-400 - NO TXV RH - Phenolic Coated	DV	1095	15 Days
375-000108-101	DVX-600 - NO TXV LH - Phenolic Coated	DV	1936	15 Days
TBD	DVX-600 - NO TXV RH - Phenolic Coated	DV		15 Days
376-000114-101	DVX-800 - NO TXV LH - Phenolic Coated	DV	1424	15 Days
TBD	DVX-800 - NO TXV RH - Phenolic Coated	DV		15 Days
376-000120-101	DVX-1000 - NO TXV LH - Phenolic Coated	DV	1459	15 Days
TBD	DVX-1000 - NO TXV RH - Phenolic Coated	DV		15 Days
076-000247-000	DV-400/600/800 LH DRAINPAN	DV	180	
076-000248-000	DV-400/600/800 RH DRAINPAN	DV	180	
076-000249-000	DV-1000 LH DRAINPAN	DV	193	
102935	DV-400 115V MOTOR 1/10HP	DV	464	SD
102940	DV-600 115V MOTOR 1/6HP	DV	473	SD
102945	DV-800 115V MOTOR 1/4HP	DV	504	SD
102950	DV-1000 115V MOTOR 1/3HP	DV	551	SD
N/A	DV-400 277V MOTOR	DV	N/A	
N/A	DV-600 277V MOTOR	DV	N/A	
* 702964	DV-800 277V MOTOR	DV	964	SD
N/A	DV-1000 277V MOTOR (702966)	DV	N/A	
* 010-100013-000	DV-400 208/230V MOTOR	DV	611	SD
* 010-100014-000	DV-600 208/230V MOTOR	DV	639	SD
* 010-100015-000	DV-800 208/230V MOTOR	DV	671	SD
102984	DV-1000 208/230V MOTOR	DV	711	SD
702952	MOTOR MOUNT FOR 208/230 & 277 UNITS		95	SD
112028	Capacitor - 5MFD for Motors 102935, 102940, 702962, 010-100014-000, 702964, 702966	DV/ DVA	22	SD
010-170019-000	Capacitor - 3MFD for Motors 010-100013-000	DV/ DVA	71	SD
112029	Capacitor - 7.5MFD for Motors 102945, 102950	DV/ DVA	26	SD
112030	Capacitor - 10MFD for Motors 010-100015-000	DV/ DVA	28	SD
106899	Capacitor - 15MFD for Motor 102984	DV/ DVA	37	SD
010-120019-001	DV-400 BLOWER	DV	254	SD
010-120020-001	DV-600 BLOWER	DV	266	SD
010-120020-001	DV-800 BLOWER	DV	266	SD
010-120021-001	DV-1000 BLOWER	DV	333	SD

* These Motors require the use of a separate motor mount, part number 702952

** Replacement coils listed above are for main DV fan coil unit, except for the 2R Hot Water Accessory

The 2 row DV hot water coil accessory mounts to the exterior of the fan coil unit and includes insulated cabinet (1/2" fiberglass) with polyester powder coating (gray)



BELT DRIVE HORIZONTAL AIR HANDLER

Part Number	Description	FITS SERIES	List Price
BLOWERS			
* 102995R	BLOWER for 2 ton unit - 024	BH - HBA	732
102999R	BLOWER for 3 ton unit - 036	BH - HBA	785
* 103039R	BLOWER for 4 ton unit - 048	BH - HBA	862
* 103040R	BLOWER for 5 ton unit - 060	BH - HBA	916
* 010-120016-000R	BLOWER for 7.5 ton unit - 090	BH - HBA	1075
* 010-120016-000R	BLOWER for 10 ton unit - 120	BH - HBA	1075
010-120017-001	TWIN BLOWER for 15 ton unit - 180 or 20 ton unit - 240 If air shipment for 010-120017-001 needed, contact factory for quote	BH - HBA	2459
MOTOR MOUNTS FOR UNITS MANUFACTURED 1993 AND AFTER			
550003	R/P, MOTOR ADJUSTMENT KIT	BH - HBA	69
* 102996	Motor Mount Bracket for 2 ton Unit - 024- fits blower 102995R	BH - HBA	34
* 103001	Motor Mount Bracket for 3 ton Unit - 036- fits blower 102999R	BH - HBA	43
* 103015	Motor Mount Bracket for 4 ton Unit - 048- fits blower 103039R	BH - HBA	34
* HBB20-MTRMNT	Motor Mount Bracket for 5 ton Unit - 060- fits blower 103040R	BH - HBA	165
DRAINPANS			
550078	24-BH DRAINPAN - Galvanized	BH	374
550072	36-BH DRAINPAN - Galvanized	BH	385
550285	48-BH DRAINPAN - Galvanized	BH	399
550385	60-BH DRAINPAN - Galvanized	BH	474
550485	90-BH DRAINPAN - Galvanized	BH	516
550585	120-BH DRAINPAN - Galvanized	BH	556
550685	180-BH DRAINPAN - Galvanized	BH	631
550785	240-BH DRAINPAN - Galvanized	BH	745
073-551042-001	24-HBA DRAINPAN - Galvanized	HBA	359
073-551036-001	36-HBA DRAINPAN - Galvanized	HBA	399
073-551048-001	48-HBA DRAINPAN - Galvanized	HBA	510
073-551060-001	60-HBA DRAINPAN - Galvanized	HBA	581
550443	90-HBA DRAINPAN - Galvanized	HBA	761
073-251763-001	120-HBA DRAINPAN - Galvanized	HBA	764
073-250004-000	180-HBA DRAINPAN - Galvanized	HBA	861
550985	240-HBA DRAINPAN - Galvanized	HBA	1460

SD
SD
SD
SD
SD
SD

SD
SD
SD
SD
SD

* Units manufactured prior to 1993 blowers see page 22. Motor mount brackets installed on blowers prior to 1993. Confirm blower housing dimensions page 22.

Replacement Blowers include blower housing, wheel, shaft, bearings, & bearing brackets



BELT DRIVE HORIZONTAL AIR HANDLER

Part Number	Description	FITS SERIES	List Price	
375-000819-001	24-HBH - 2 ROW HOT WATER COIL	BH - HBA	775	10 days
375-000802-001	36-HBH - 2 ROW HOT WATER COIL	BH - HBA	829	10 days
375-000792-001	48-HBH - 2 ROW HOT WATER COIL	BH - HBA	967	10 days
375-000780-001	60-HBH - 2 ROW HOT WATER COIL	BH - HBA	1176	10 days
375-260410-000	90-HBH - 2 ROW HOT WATER COIL	BH - HBA	1362	10 days
375-261126-001	120-HBH - 2 ROW HOT WATER COIL	BH - HBA	2075	10 days
452201	180-HBH - 2 ROW HOT WATER COIL	BH - HBA	2035	10 days
464401	240-HBH - 2 ROW HOT WATER COIL	BH - HBA	1611	10 days
375-000822-001	24-HBH-1 ROW HOT WATER COIL	BH - HBA	682	10 days
375-000805-001	36-HBH-1 ROW HOT WATER COIL	BH - HBA	696	10 days
375-000795-001	48-HBH-1 ROW HOT WATER COIL	BH - HBA	825	10 days
375-000783-001	60-HBH-1 ROW HOT WATER COIL	BH - HBA	969	10 days
375-000816-001	24-BHW-4 - 4ROW CW/HW COIL	BH - HBA	1044	10 days
375-000801-001	36-BHW-4 - 4ROW CW/HW COIL	BH - HBA	1125	10 days
375-000789-001	48-BHW-4 - 4ROW CW/HW COIL	BH - HBA	1386	10 days
375-000776-001	60-BHW-4 - 4ROW CW/HW COIL	BH - HBA	1583	10 days
375-260409-000	90-BHW-4 - 4ROW CW/HW COIL	BH - HBA	2114	10 days
375-261127-001	120-BHW-4 - 4ROW CW/HW COIL	BH - HBA	2066	10 days
375-450601-XXX	180-BHW-4 - 4ROW CW/HW COIL	BH - HBA	3188	10 days
375-450701-XXX	240-BHW-4 - 4ROW CW/HW COIL	BH - HBA	2765	10 days
375-000813-001	24-BHW-6 - 6ROW CW/HW COIL	BH - HBA	1242	10 days
375-000798-001	36-BHW-6 - 6ROW CW/HW COIL	BH - HBA	1392	10 days
375-000786-001	48-BHW-6 - 6ROW CW/HW COIL	BH - HBA	1979	10 days
375-000773-001	60-BHW-6 - 6ROW CW/HW COIL	BH - HBA	2293	10 days
375-260408-000	90-BHW-6 - 6ROW CW/HW COIL	BH - HBA	2191	10 days
375-261128-001	120-BHW-6 - 6ROW CW/HW COIL	BH - HBA	3299	10 days
375-451401-XXX	180-BHW-6 - 6ROW CW/HW COIL	BH - HBA	3457	10 days
375-260371-961	240-BHW-6 - 6ROW CW/HW COIL LH	BH - HBA	3777	10 days
375-260371-960	240-BHW-6 - 6ROW CW/HW COIL RH	BH - HBA	3777	10 days

NOTE: Replacement coils used in the BH/HBA series will see a difference in stubout locations



BELT DRIVE HORIZONTAL AIR HANDLER

Part Number	Description	FITS SERIES	List Price	
R22 Replacement Coils (TXV's included) (single refrigerant circuit unless marked "DUAL")				
375-000633-001	24-BHX/HBAX-3R DX RH R22 Single Circuit	BH - HBA	1331	10 days
375-000635-001	24-BHX/HBAX-3R DX LH R22 Single Circuit	BH - HBA	1327	10 days
375-000557-001	36-BHX/HBAX-3R DX RH R22 Single Circuit	BH - HBA	1479	10 days
375-000556-001	36-BHX/HBAX-3R DX LH R22 Single Circuit	BH - HBA	1485	10 days
375-000478-001	48-BHX/HBAX-3R DX RH R22 Single Circuit	BH - HBA	1598	10 days
375-000479-001	48-BHX/HBAX-3R DX LH R22 Single Circuit	BH - HBA	1605	10 days
375-000373-001	60-BHX/HBAX-3R RH R22 Single Circuit	BH - HBA	1791	10 days
375-000377-001	60-BHX/HBAX-3R LH R22 Single Circuit	BH - HBA	1813	10 days
375-261116-001	90-BHX/HBAX-3R RH R22 Single Circuit	BH - HBA	1786	10 days
375-261117-001	90-BHX/HBAX-3R LH R22 Single Circuit	BH - HBA	2163	10 days
375-260514-001	120-BHX/HBAX RH R22 Single Circuit	BH - HBA	2399	10 days
375-260515-001	120-BHX/HBAX LH R22 Single Circuit	BH - HBA	2349	10 days
375-260535-001	180-BHX/HBAX DUAL Circuit RH R22	BH - HBA	2678	10 days
375-260536-001	180-BHX/HBAX DUAL Circuit LH R22	BH - HBA	2678	10 days
375-260537-001	240-BHX/HBAX RH R22 DUAL Circuit	BH - HBA	2823	10 days
375-260538-001	240-BHX/HBAX LH R22 DUAL Circuit	BH - HBA	2829	10 days
R410A Replacement Coils (TXV's included) (single refrigerant circuit unless marked "DUAL")				
375-000629-001	24-BHX/HBAX-3R DX RH R410A Single Circuit (See notes 1 and 2)	BH - HBA	1348	10 days
375-000634-001	24-BHX/HBAX-3R DX LH R410A Single Circuit (See notes 1 and 2)	BH - HBA	1357	10 days
375-000528-001	36-BHX/HBAX-3R DX RH R410A Single Circuit (See notes 1 and 2)	BH - HBA	1484	10 days
375-000545-001	36-BHX/HBAX-3R DX LH R410A Single Circuit (See notes 1 and 2)	BH - HBA	1715	10 days
375-000453-001	48-BHX/HBAX-3R DX RH R410A Single Circuit (See notes 1 and 2)	BH - HBA	1854	10 days
375-000455-001	48-BHX/HBAX-3R DX LH R410A Single Circuit (See notes 1 and 2)	BH - HBA	1619	10 days
375-000341-001	60-BHX/HBAX-3R RH R410A Single Circuit (See notes 1 and 2)	BH - HBA	2080	10 days
375-000376-001	60-BHX/HBAX-3R LH R410A Single Circuit (See notes 1 and 2)	BH - HBA	1807	10 days
375-261120-001	90-BHX/HBAX-3R RH R410A Single Circuit (See notes 1 and 2)	BH - HBA	2010	10 days
375-261121-001	90-BHX/HBAX-3R LH R410A Single Circuit (See notes 1 and 2)	BH - HBA	2070	10 days
373-261133-001	120-BHX/HBAX RH R410A Single Circuit (See notes 1 and 2)	BH - HBA	2722	10 days
373-261144-001	120-BHX/HBAX LH R410A Single Circuit (See notes 1 and 2)	BH - HBA	2728	10 days
373-261134-001	120-HBAX RH R410A DUAL (See notes 1 and 2)	BH - HBA	2844	10 days
373-261162-001	120-HBAX LH R410A DUAL (See notes 1 and 2)	BH - HBA	2819	10 days
373-260971-001	180-BHX/HBAX DUAL Circuit RH R410A (See notes 1 and 2)	BH - HBA	2747	10 days
373-261042-001	180-BHX/HBAS DUAL Circuit LH R410A (See notes 1 and 2)	BH - HBA	2826	10 days
375-261061-001	240-BHX/HBAX RH R410A DUAL Circuit (See notes 1 and 2)	BH - HBA	3155	10 days
N/A	240-BHX/HBAX LH R410A DUAL Circuit	BH - HBA	N/A	

Notes:

1. Replacement coils used in the BH/HBA series will see a difference in stubout locations
2. Replacement coils for BH/HBA series may be deeper (direction of airflow) than original coil. Affects reheat arrangement when heating coil is mounted downstream of the cooling coil. Check fit before ordering when unit has DX with HW or DX with Steam coil reheat arrangement.

BV to BV-D Units COMMON REPLACEMENT PARTS



BV

BELT DRIVE VERTICAL AIR HANDLERS

Part Number	Description	FITS SERIES	List Price
* 103078	BLOWER for 2/3 ton unit - 024/036	BV thru BV-D	716
* 103039R	BLOWER for 4 ton unit - 048	BV thru BV-D	862
* 103040R	BLOWER for 5 ton unit - 060	BV thru BV-D	916
* 010-120016-000R	BLOWER for 7.5/10 ton unit - 90/120	BV thru BV-D	1075

SD
SD
SD
SD

* Units manufactured prior to 1993 blowers see page 22

Blower includes blower housing, wheel, shaft, bearings, & bearing brackets

540485	DRAINPAN 2/3 ton unit - 024/036 - Galvanized Left Hand	BV thru BV-B	581
540460	DRAINPAN 2/3 ton unit - 024/036 - Stainless Left Hand	BV thru BV-B	904
110-329512-702	DRAINPAN 2/3 ton unit - 024/036 - Polymer Left Hand	BV-C thru BV-D	236
540685	DRAINPAN for 4 ton unit - 048 - Galvanized Left Hand	BV thru BV-B	750
540470	DRAINPAN for 4 ton unit - 048 - Stainless Left Hand	BV thru BV-B	1207
110-329512-703	DRAINPAN for 4 ton unit - 048 - Polymer- UNAVAILABLE	BV-C thru BV-D	N/A
373-270051-000	DRAINPAN for 4 ton unit - 048 - Stainless Left Hand	BV-C thru BV-D	1033
540885	DRAINPAN for 5 ton unit - 060 - Galvanized Left Hand	BV thru BV-B	1277
540450	DRAINPAN for 5 ton unit - 060 - Stainless Left Hand	BV thru BV-B	1960
540450RH	DRAINPAN for 5 ton unit - 060 - Stainless Right Hand	BV thru BV-B	1960
110-329512-703	DRAINPAN for 5 ton unit - 060 - Polymer- UNAVAILABLE	BV-C thru BV-D	N/A
373-270052-000	DRAINPAN for 5 ton unit - 060 - Stainless Left Hand	BV-C thru BV-D	1304
373-270020-001	DRAINPAN for 7.5 ton unit - 090 - Galvanized Left Hand	BV thru BV-D	756
373-270017-000	DRAINPAN for 10 ton unit - 120 - Galvanized Left Hand	BV thru BV-D	884
375-250036-001	2 Row Hot Water Coil for 24/36-BV	BV thru BV-D	739
375-250037-001	2 Row Hot Water Coil for 48-BV	BV thru BV-D	805
375-250042-001	2 Row Hot Water Coil for 60-BV	BV thru BV-D	855
444300-RP	2 Row Hot Water Coil for 90-BV	BV thru BV-D	1365
444400	2 Row Hot Water Coil for 120-BV	BV thru BV-D	1387

SD

10 days
10 days
10 days
10 days
10 days
10 days

Coils Below Include the Standard Drainpan

375-000529-001	Water - Cooling Coil for 24-BVW Left Hand	BV thru BV-D	1524
375-000530-001	Water - Cooling Coil for 36-BVW Left Hand	BV thru BV-D	1611
376-000531-001	Water - Cooling Coil for 48-BVW- UNAVAILABLE (POLY)	BV thru BV-D	N/A
375-260859-001	Water - Cooling Coil for 48-BVW (SS) Left Hand	BV thru BV-D	2191
740800	Water - Cooling Coil for 60-BVW Left Hand	BV thru BV-B	1765
376-000532-001	Water - Cooling Coil for 60-BVW-C or D-UNAVAILABLE (POLY)	BV-C thru BV-D	N/A
375-260860-001	Water - Cooling Coil for 60-BVW-C or D (SS) Left Hand	BV-C thru BV-D	2461
373-260688-001	Water - Cooling Coil for 90-BVW Left Hand	BV thru BV-B	2192
373-260689-001	Water - Cooling Coil for 120-BVW Left Hand	BV thru BV-B	2319

10 days
10 days
10 days
10 days
10 days
10 days
10 days
10 days
10 days

TXV's included on these refrgerant coils:

376-000533-002	DX - R-22 Cooling Coil for 24-BVX Single Circuit Left Hand	BV thru BV-D	1658
375-000534-002	DX - R-22 Cooling Coil for 36-BVX Single Circuit Left Hand	BV thru BV-D	2079
376-000535-002	DX - R-22 Cooling Coil for 48-BVX-UNAVAILABLE (POLY)	BV thru BV-D	N/A
376-001222-002	DX - R-22 Cooling Coil for 48-BVX (SS) Single Circuit Left Hand	BV thru BV-D	1770
742300	DX - R-22 Cooling Coil for 60-BVX Single Circuit Left Hand	BV thru BV-A	1847
N/A	DX - R-22 Cooling Coil for 60-BVX Single Circuit Left Hand	BV-B	N/A
376-000536-002	DX - R-22 Cooling Coil for 60-BVX-C or D-UNAVAILABLE (POLY)	BV-C thru BV-D	N/A
376-001223-002	DX - R-22 Cooling Coil for 60-BVX-C or D (SS) Single Circuit Left Hand	BV-C thru BV-D	1976
373-260435-001	DX - R-22 Cooling Coil for 90-BVX Single Circuit Left Hand	BV thru BV-B	2376
373-260756-001	DX - R-22 Cooling Coil for 90-BVX Dual Circuit Left Hand	BV thru BV-B	2417
N/A	DX - R-22 Cooling Coil for 120-BVX Single Circuit Left Hand	BV thru BV-B	N/A
373-260436-001	DX - R-22 Cooling Coil for 120-BVX Dual Circuit Left Hand	BV thru BV-B	2644
376-000533-001	DX - R410A Cooling Coil for 24-BVX Single Circuit Left Hand	BV thru BV-D	1660
375-000534-001	DX - R410A Cooling Coil for 36-BVX Single Circuit Left Hand	BV thru BV-D	2050
376-000535-001	DX - R410A Cooling Coil for 48-BVX-UNAVAILABLE (POLY)	BV thru BV-D	N/A
376-001222-001	DX - R410A Cooling Coil for 48-BVX (SS) Single Circuit Left Hand	BV thru BV-D	1790
N/A	DX - R410A Cooling Coil for 60-BVX Single Circuit Left Hand	BV thru BV-A	N/A
N/A	DX - R410A Cooling Coil for 60-BVX-B Single Circuit Left Hand	BV-B	N/A
376-000536-001	DX - R410A Cooling Coil for 60-BVX-C or D-UNAVAILABLE (POLY)	BV-C thru BV-D	N/A
375-001223-001	DX - R410A Cooling Coil for 60-BVX-C or D (SS) Single Circuit Left Hand	BV-C thru BV-D	2260
375-260745-001	DX - R410A Cooling Coil for 90-BVX Single Circuit Left Hand	BV thru BV-B	2552
375-260776-001	DX - R410A Cooling Coil for 90-BVX Dual Circuit Left Hand	BV thru BV-B	2668
N/A	DX - R410A Cooling Coil for 120-BVX Single Circuit Left Hand	BV thru BV-B	N/A
373-260777-001	DX - R410A Cooling Coil for 120-BVX Dual Circuit Left Hand	BV thru BV-B	2902

10 days
10 days
10 days
10 days
10 days
10 days
10 days
10 days
10 days
10 days
10 days
10 days
10 days
10 days
10 days
10 days
10 days
10 days
10 days
10 days
10 days
10 days
10 days

* All Coils are Left Hand Connection Only



BELT DRIVE MODULAR AIR HANDLER

Part Number	Description	FITS SERIES	List Price
103078	BLOWER for 2/3 ton unit - 024/036	BM - BMA	716
103029R	BLOWER for 4/5 ton unit - 048/060	BM - BMA	732
103053	BLOWER for 7.5/10 ton unit - 090/120	BM - BMA	1146
010-120017-001	BLOWER for 15/20 ton unit - 180/240	BM - BMA	2459

SD
SD
SD

Blower includes blower housing, wheel, shaft, bearings, & bearing brackets

073-551036-001	DRAINPAN for 2/3 ton unit - 024/036	BM - BMA	399
561704	DRAINPAN for 4/5 ton unit - 048/060	BM - BMA	454
562733	DRAINPAN for 7.5/10 ton unit - 90/120	BM - BMA	585
563304	DRAINPAN for 15/20 ton unit - 180/240	BM - BMA	685
375-451601-XXX	2 Row Hot Water Coil for 24-BM	BM - BMA	910
375-451702-XXX	2 Row Hot Water Coil for 36-BM	BM - BMA	955
375-463900-XXX	2 Row Hot Water Coil for 48-BM	BM - BMA	1050
375-464000-XXX	2 Row Hot Water Coil for 60-BM	BM - BMA	1291
375-464100-XXX	2 Row Hot Water Coil for 90-BM	BM - BMA	1457
375-464200-XXX	2 Row Hot Water Coil for 120-BM	BM - BMA	1595
464300	2 Row Hot Water Coil for 180-BM	BM - BMA	1953
375-464401-XXX	2 Row Hot Water Coil for 240-BM	BM - BMA	2846
450001	4 Row CW/HW Coil for 24-BMW	BM - BMA	926
375-450101-XXX	4 Row CW/HW Coil for 36-BMW	BM - BMA	1250
461700	4 Row CW/HW Coil for 48-BMW	BM - BMA	1367
375-462000-XXX	4 Row CW/HW Coil for 60-BMW	BM - BMA	1770
462500	4 Row CW/HW Coil for 90-BMW	BM - BMA	1976
462900	4 Row CW/HW Coil for 120-BMW	BM - BMA	2247
463400	4 Row CW/HW Coil for 180-BMW	BM - BMA	2230
375-450701-XXX	4 Row CW/HW Coil for 240-BMW	BM - BMA	2756
450803	6 Row CW/HW Coil for 24-BMW	BM - BMA	1177
375-450903-XXX	6 Row CW/HW Coil for 36-BMW	BM - BMA	1398
461800	6 Row CW/HW Coil for 48-BMW	BM - BMA	1784
375-462100-XXX	6 Row CW/HW Coil for 60-BMW	BM - BMA	1840
462600	6 Row CW/HW Coil for 90-BMW	BM - BMA	2121
375-463000-XXX	6 Row CW/HW Coil for 120-BMW	BM - BMA	2581
463500	6 Row CW/HW Coil for 180-BMW	BM - BMA	3234
RP451500	6 Row CW/HW Coil for 240-BMW	BM - BMA	2707
TXV's included on these refrgerant coils:			
448801	3 Row DX-R22 Cooling Coil for 24-BMX Single Circuit	BM - BMA	1103
375-448901-XXX	3 Row DX-R22 Cooling Coil for 36-BMX Single Circuit	BM - BMA	1511
461600	3 Row DX-R22 Cooling Coil for 48-BMX Single Circuit	BM - BMA	1412
375-461900-XXX	3 Row DX-R22 Cooling Coil for 60-BMX Single Circuit	BM - BMA	1735
375-462300-XXX	3 Row DX-R22 Cooling Coil 90-BMX Single Circuit	BM - BMA	2070
375-462700-XXX	3 Row DX-R22 Cooling Coil 120-BMX Single Circuit	BM - BMA	2055
462800	3 ROW DX-R22 Cooling coil 120-BMX DUAL Circuit	BM - BMA	2108
N/A	3 Row DX-R22 Cooling Coil 180-BMX Single Circuit	BM - BMA	N/A
463300	3 Row DX-R22 Cooling Coil 180-BMX Dual Circuit	BM - BMA	2707
375-260537-001	3 Row DX-R22 Cooling Coil 240-BMX Dual Circuit	BM - BMA	2823
375-260863-001	24-BMX DX RH R410A Single Circuit	BM - BMA	1135
375-260916-001	24-BMX DX LH R410A Single Circuit	BM - BMA	1163
375-260452-000	36-BMX DX RH R410A Single Circuit	BM - BMA	1497
375-260452-000	36-BMX DX LH R410A Single Circuit	BM - BMA	1497
375-261170-001	48-BMX DX RH R410A Single Circuit	BM - BMA	1561

10 days
10 days
10 days
10 days
10 days
10 days
10 days
10 days
10 days
10 days
10 days
10 days
10 days
10 days
10 days
10 days
10 days
10 days
10 days
10 days

BELT DRIVE ROOF TOP AIR HANDLER

Part Number	Description	FITS SERIES	List Price	
103078	BLOWER for 2 ton unit - 024	BR - BR-C	716	SD
103078	BLOWER for 3 ton unit - 036	BR - BR-C	716	SD
103039R	BLOWER for 4 ton unit - 048	BR - BR-C	862	SD
103040R	BLOWER for 5 ton unit - 060	BR - BR-C	916	SD
010-120016-000R	BLOWER for 7.5 ton unit - 090	BR - BR-C	1075	SD
010-120016-000R	BLOWER for 10 ton unit - 120	BR - BR-C	1075	SD
103053	BLOWER for 15 ton unit - 180	BR - BR-C	1146	SD
103056	BLOWER for 20 ton unit - 240	BR - BR-C	2519	SD

Blower includes blower housing, wheel, shaft, bearings, & bearing brackets

076-000214-000	24/36-BR DRAINPAN	BR - BR-C	561	
076-000210-000	48/60-BR DRAINPAN	BR - BR-C	608	
076-000212-000	90/120/180-BR DRAINPAN	BR - BR-C	651	
076-000208-000	240-BR DRAINPAN	BR - BR-C	728	
375-451601-XXX	24-HRH - 2 ROW HOT WATER COIL	BR - BR-C	910	10 days
375-451702-XXX	36-HRH - 2 ROW HOT WATER COIL	BR - BR-C	955	10 days
451801	48-HRH - 2 ROW HOT WATER COIL	BR - BR-C	919	10 days
375-451901-XXX	60-HRH - 2 ROW HOT WATER COIL	BR - BR-C	1194	10 days
470400	90-HRH - 2 ROW HOT WATER COIL	BR - BR-C	1307	10 days
470500	120-HRH - 2 ROW HOT WATER COIL	BR - BR-C	1510	10 days
470600	180-HRH - 2 ROW HOT WATER COIL	BR - BR-C	1845	10 days
470650	240-HRH - 2 ROW HOT WATER COIL	BR - BR-C	2205	10 days
450001	24-BRW-4 - 4ROW CW/HW COIL	BR - BR-C	896	10 days
375-450101-XXX	36-BRW-4 - 4ROW CW/HW COIL	BR - BR-C	1225	10 days
450201	48-BRW-4 - 4ROW CW/HW COIL	BR - BR-C	1270	10 days
375-450302-XXX	60-BRW-4 - 4ROW CW/HW COIL	BR - BR-C	1587	10 days
467400	90-BRW-4 - 4ROW CW/HW COIL	BR - BR-C	2163	10 days
467500	120-BRW-4 - 4ROW CW/HW COIL	BR - BR-C	1965	10 days
467600	180-BRW-4 - 4ROW CW/HW COIL	BR - BR-C	2969	10 days
467700	240-BRW-4 - 4ROW CW/HW COIL	BR - BR-C	2653	10 days
450803	24-BRW-6 - 6ROW CW/HW COIL	BR - BR-C	1177	10 days
375-450903-XXX	36-BRW-6 - 6ROW CW/HW COIL	BR - BR-C	1398	10 days
451003	48-BRW-6 - 6ROW CW/HW COIL	BR - BR-C	1529	10 days
375-451103-XXX	60-BRW-6 - 6ROW CW/HW COIL	BR - BR-C	1913	10 days
468200	90-BRW-6 - 6ROW CW/HW COIL	BR - BR-C	2288	10 days
375-468300-XXX	120-BRW-6 - 6ROW CW/HW COIL	BR - BR-C	2619	10 days
468400	180-BRW-6 - 6ROW CW/HW COIL	BR - BR-C	2957	10 days
468500	240-BRW-6 - 6ROW CW/HW COIL	BR - BR-C	3568	10 days



TXV's included on these refrgerant coils:				
Part Number	Description	FITS SERIES	List Price	
TBA	24-BRX-3R DX LH R22 Single Circuit	BR - BR-C	0	10 days
TBA	24-BRX-3R DX RH R22 Single Circuit	BR - BR-C	0	10 days
375-448901-XXX	36-BRX-3R DX RH R22 Single Circuit	BR - BR-C	1511	10 days
375-260880-001	36-BRX-3R DX LH R22 Single Circuit	BR - BR-C	1417	10 days
TBA	48-BRX-3R DX LH R22 Single Circuit	BR - BR-C	0	10 days
TBA	48-BRX-3R DX RH R22 Single Circuit	BR - BR-C	0	10 days
375-260870-001	60-BRX-3R LH R22 Single Circuit	BR - BR-C	1753	10 days
375-449101-XXX	60-BRX-3R RH R22 Single Circuit	BR - BR-C	1801	10 days
TBA	24-BRX-3R DX RH R410A Single Circuit	BR - BR-C	0	10 days
TBA	24-BRX-3R DX LH R410A Single Circuit	BR - BR-C	0	10 days
375-260452-000	36-BRX-3R DX RH R410A Single Circuit	BR - BR-C	1497	10 days
375-260452-000	36-BRX-3R DX LH R410A Single Circuit	BR - BR-C	1497	10 days
TBA	48-BRX-3R DX LH R410A Single Circuit	BR - BR-C	0	10 days
TBA	48-BRX-3R DX RH R410A Single Circuit	BR - BR-C	0	10 days
375-260477-001	60-BRX-3R RH R410A Single Circuit	BR - BR-C	1710	10 days
375-260479-001	60-BRX-3R LH R410A Single Circuit	BR - BR-C	1651	10 days
466400	90-BRX-3 - 3R DX-R22 COOLING COIL Single Circuit	BR - BR-C	1932	10 days
466600	120-BRX-3 - 3R DX-R22 COOLING COIL Single Circuit	BR - BR-C	2160	10 days
N/A	180-BRX-3 - 3R DX-R22 COOLING COIL Single Circuit	BR - BR-C	N/A	
466900	240-BRX-3 - 3R DX-R22 COOLING COIL Dual Circuit	BR - BR-C	3353	10 days

DU-B Units COMMON REPLACEMENT PARTS

DIRECT DRIVE UNIVERSAL AIR HANDLER



DU-B

Part Number	Description	FITS SERIES	List Price
010-120020-001	BLOWER for 018/024-DU-A & DU-B	DU-B	266
N/A	BLOWER for 030/036-DU-A & DU-B (103073)	DU-B	N/A
103076	BLOWER for 042/048-DU-A & DU-B	DU-B	328
103088	BLOWER for 060-DU-A & DU-B	DU-B	468
NOTE: THE FOLLOWING MOTORS REQUIRE A SEPARATE CAPACITOR			
102980	115v MOTOR for 018/024-DU-A & DU-B - 1/4 HP	DU-B	436
102983	115v MOTOR for 030/036-DU-A & DU-B - 1/3 HP	DU-B	462
010-100000-000	115v MOTOR for 042/048-DU-A & DU-B - 3/4 HP	DU-B	647
010-100000-000	115v MOTOR for 060-DU-A & DU-B - 3/4 HP	DU-B	647
102981	208/240v MTR for 018/024-DU-A & DU-B 1/4HP	DU-B	601
102984	208/240v MTR for 030/036-DU-A & DU-B 1/3HP	DU-B	711
102987	208/240v MTR for 042/048-DU-A & DU-B 3/4HP	DU-B	728
102990	208/240v MTR for 060-DU-A & DU-B 1/2HP	DU-B	722
112030	Capacitor for Motor 102980, 102981	DU-B	28
106899	Capacitor for Motor 102983, 102984, 102987	DU-B	146
106860	Capacitor for Motor 010-100000-000, 102990	DU-B	45
373-270007-001	DRAINPAN for 018/024-DU-B	DU-B	728
584104	DRAINPAN for 030/036-DU-B	DU-B	798
584204	DRAINPAN for 042/048-DU-B	DU-B	922
584304	DRAINPAN for 060-DU-B	DU-B	946
375-484040-XXX	3Row Water Cooling Coil for 024-DUW-B	DU-B	830
375-484050-XXX	4Row Water Cooling Coil for 024-DUW-B	DU-B	952
375-484140-XXX	3Row Water Cooling Coil for 036-DUW-B	DU-B	1001
375-484150-XXX	4Row Water Cooling Coil for 036-DUW-B	DU-B	1033
375-484240-XXX	3Row Water Cooling Coil for 048-DUW-B	DU-B	1177
375-484250-XXX	4Row Water Cooling Coil for 048-DUW-B	DU-B	1397
375-484300-XXX	3Row Water Cooling Coil for 060-DUW-B	DU-B	1442
375-484310-XXX	4Row Water Cooling Coil for 060-DUW-B	DU-B	1597
375-260234-002	3Row DX With R22 TXV Mounted 018-DUX-B	DU-B	1006
373-260236-002	3Row DX With R22 TXV Mounted 024-DUX-B	DU-B	899
373-260238-002	3Row DX With R22 TXV Mounted 030-DUX-B	DU-B	1486
373-260240-002	3Row DX With R22 TXV Mounted 036-DUX-B	DU-B	1111
373-260242-002	3Row DX With R22 TXV Mounted 042-DUX-B	DU-B	1362
373-260244-002	3Row DX With R22 TXV Mounted 048-DUX-B	DU-B	1318
373-260246-002	3Row DX With R22 TXV Mounted 060-DUX-B	DU-B	1527
373-260235-001	4Row DX-R22 With TXV for 018-DUX-B	DU-B	1077
373-260237-001	4Row DX-R22 With TXV for 024-DUX-B	DU-B	1029
375-260239-001	4Row DX-R22 With TXV for 030-DUX-B	DU-B	1359
375-260241-001	4Row DX-R22 With TXV for 036-DUX-B	DU-B	1215
373-260243-001	4Row DX-R22 With TXV for 042-DUX-B	DU-B	1226
375-260245-001	4Row DX-R22 With TXV for 048-DUX-B	DU-B	1759
373-260247-001	4Row DX-R22 W/TXV for 060-DUX-B (Obsolete)	DU-B	N/A
373-260704-001	4Row DX-R410A With TXV for 018-DUX-B	DU-B	1236
373-240045-001	4Row DX-R410A With TXV for 024-DUX-B	DU-B	1083
373-240046-001	4Row DX-R410A With TXV for 036-DUX-B OR 030-DUX-B	DU-B	1318
373-240032-002	4Row DX-R410A With TXV for 048-DUX-B OR 042-DUX-B	DU-B	1378
373-240033-002	4Row DX-R410A With TXV for 060-DUX-B	DU-B	1675
375-484410-XXX	2Row HW Heating Coil for 018/024-DU-B See Note 1.	DU-B	516
375-484430-XXX	3Row HW Heating Coil for 018/024-DU-B See Note 1.	DU-B	674
375-484450-XXX	2Row HW Heating Coil for 030/036-DU-B See Note 1.	DU-B	779
375-484470-XXX	3Row HW Heating Coil for 030/036-DU-B See Note 1.	DU-B	753
375-485320-XXX	3Row HW Heating Coil for 042/048-DU-A/B See Note 1.	DU-B	909
375-485340-XXX	4Row HW Heating Coil for 042/048-DU-A/B See Note 1.	DU-B	1013
375-485360-XXX	3Row HW Heating Coil for 060-DU-A/B See Note 1.	DU-B	984
375-485380-XXX	4Row HW Heating Coil for 060-DU-A/B See Note 1.	DU-B	1226
N/A	Controller, HW/DX/Fan (010-170007-000)	DU-B	N/A
112003	Transformer - 40VA 120V:24V	DU-B	97
112158	Transformer - 40VA 208-230V:24V	DU-B	149
112000	Fan Relay - 12A/NO-NC/24V	DU-B	223
N/A	Hot Water Pump for DU/KV Series (102165)	DU-B	N/A
DUB-112038	Motor Mount Kit - 042/048/	DU-B	79
112036	Motor Mount - 060	DU-B	35

SD
SD
SD

SD
SD
SD
SD

SD
SD
SD
SD

SD
SD
SD

10 days
10 days
10 days
10 days
10 days
10 days
10 days

10 days
10 days
10 days
10 days
10 days
10 days
10 days
10 days
10 days
10 days
10 days

10 days
10 days
10 days
10 days
10 days
10 days
10 days
10 days
10 days

SD
SD
SD
SD

Be sure to add the capacitor below!

Note 1: Heating Coils shown are for external mounted pumps, for internal contact factory

CH*/CEW-A Units COMMON REPLACEMENT PARTS
DIRECT DRIVE UNCASED FAN COIL



**006/012-
CH*/CEW-A**

Part Number	Description	FITS SERIES	List Price	
102963	115V Motor - 1/15 HP	006/012-CH*/CEW-A	471	SD
102955	115V Motor Hi Static - 1/10 HP	006/012-CH*/CEW-A	416	SD
102964	208/230V Motor - 1/15 HP	006/012-CH*/CEW-A	437	SD
102994	208/230V Motor Hi Static - 1/10 HP	006/012-CH*/CEW-A	460	SD
Motors include capacitor				
112021	Blower Wheel - Clock Wise Rotation	006-CH*/CEW-A	85	SD
103090	Blower Wheel - Clock Wise Rotation	012-CH*/CEW-A	137	SD
112021	Blower Wheel - HI Stat CW Rotation	006-CH*/CEW-A	85	SD
112232	Blower Wheel - HI Stat CW Rotation	012-CH*/CEW-A	83	SD
571253	Motor Mounting Bracket	All	46	
112020	Motor Mounting Clip	All	6	SD
010-120024-000	Blower Housing	006-CH*/CEW-A	277	
010-120024-001	Blower Housing	012-CH*/CEW-A	277	
076-000321-000	Drainpan - Galv	006/012-CH*/CEW-A	328	
076-000367-000	Drainpan - Stainless Steel	006/012-CH*/CEW-A	476	
375-220045-012	Return Air Plenum Kit	012-CH*/CEW-A	841	
375-472600-XXX	3Row Water Coil	006-CH*/CEW-A	608	10 days
472602	4Row Water Coil	006-CH*/CEW-A	613	10 days
472604	5Row Water Coil	006-CH*/CEW-A	534	10 days
472606	3Row Chilled Water - 1Row Hot Water	006-CH*/CEW-A	758	10 days
472608	1Row Hot Water - 3Row Chilled Water	006-CH*/CEW-A	743	10 days
472610	4Row Chilled Water - 1Row Hot Water	006-CH*/CEW-A	808	10 days
472612	1Row Hot Water - 4Row Chilled Water	006-CH*/CEW-A	734	10 days
472614	3Row Chilled Water - 2Row Hot Water	006-CH*/CEW-A	774	10 days
472616	2Row Hot Water - 3Row Chilled Water	006-CH*/CEW-A	801	10 days
375-472620-XXX	3Row Water Coil	012-CH*/CEW-A	591	10 days
472622	4Row Water Coil	012-CH*/CEW-A	636	10 days
472624	5Row Water Coil	012-CH*/CEW-A	682	10 days
472626	3Row Chilled Water - 1Row Hot Water	012-CH*/CEW-A	696	10 days
472628	1Row Hot Water - 3Row Chilled Water	012-CH*/CEW-A	779	10 days
472630	4Row Chilled Water - 1Row Hot Water	012-CH*/CEW-A	836	10 days
472632	1Row Hot Water - 4Row Chilled Water	012-CH*/CEW-A	836	10 days
472634	3Row Chilled Water - 2Row Hot Water	012-CH*/CEW-A	808	10 days
472636	2Row Hot Water - 3Row Chilled Water	012-CH*/CEW-A	818	10 days
TBA	DX Coil Less TXV	012-CH*/CEW-A	0	10 days
472736	1Row Hot Water Coil for DX Units	012-CH*/CEW-A	548	10 days
472746	2Row Hot Water Coil for DX Units	012-CH*/CEW-A	476	10 days
112003	Transformer - 40VA 120:20 QC	ALL	97	SD
112158	Transformer - 40VA 208/240:24 QC	ALL	149	SD
112000	Fan Relay - 12A/NO-NC/24V	ALL	145	SD

CH*/CEW-A Units COMMON REPLACEMENT PARTS



**018-CH*/
CEW-A**

DIRECT DRIVE UNCASSED FAN COIL

Part Number	Description	FITS SERIES	List Price	
102966	115V Motor - 1/10 HP	018-CH*/CEW-A	450	SD
102954	115V Motor Hi Static - 1/8 HP	018-CH*/CEW-A	497	SD
102968	277V Motor - 1/10 HP	018-CH*/CEW-A	499	
102967	208/230V Motor - 1/10 HP	018-CH*/CEW-A	460	SD
102959	208/230V Motor Hi Static - 1/8 HP	018-CH*/CEW-A	456	SD
Motors include capacitor				
103092	Blower Wheel - Clock Wise Rotation	018-CH*/CEW-A	116	SD
103093	Blower Wheel - CCW Rotation	018-CH*/CEW-A	116	SD
112021	Blower Wheel - HI Stat CW Rotation	018-CH*/CEW-A	74	SD
112022	Blower Wheel - HI Stat CCW Rotation	018-CH*/CEW-A	74	SD
571253	Motor Mounting Bracket	All	46	
112020	Motor Mounting Clip	All	6	SD
010-120024-000	Blower Housing	018-CH*/CEW-A	277	
076-000322-000	Drainpan - Galv	018-CH*/CEW-A	345	
076-000368-000	Drainpan - Stainless Steel	018-CH*/CEW-A	527	
173-220045-018	Return Air Plenum Kit	018-CH*/CEW-A	892	
472640	3Row Water Coil	018-CH*/CEW-A	531	10 days
472642	4Row Water Coil	018-CH*/CEW-A	716	10 days
472644	5Row Water Coil	018-CH*/CEW-A	789	10 days
472646	3Row Chilled Water - 1Row Hot Water	018-CH*/CEW-A	860	10 days
472648	1Row Hot Water - 3Row Chilled Water	018-CH*/CEW-A	860	10 days
472650	4Row Chilled Water - 1Row Hot Water	018-CH*/CEW-A	929	10 days
472652	1Row Hot Water - 4Row Chilled Water	018-CH*/CEW-A	938	10 days
472654	3Row Chilled Water - 2Row Hot Water	018-CH*/CEW-A	867	10 days
472656	2Row Hot Water - 3Row Chilled Water	018-CH*/CEW-A	1312	10 days
472728XR	R22 DX Coil w/TXV	018-CH*-A	1079	10 days
373-260715-001	R410A Coil W/TXV	018-CH*-A	1124	10 days
472738	1Row Hot Water Coil for DX Units	018-CH*-A	475	10 days
472748	2Row Hot Water Coil for DX Units	018-CH*-A	485	10 days

CH*/CEW-A Units COMMON REPLACEMENT PARTS



**024/030-
CH*/CEW-A**

DIRECT DRIVE UNCASSED FAN COIL

Part Number	Description	FITS SERIES	List Price	
102973	115V Motor - 1/8HP	024/030-CH*/CEW-A	479	SD
102998	115V Motor Hi Static - 1/4 HP	024/030-CH*/CEW-A	544	SD
102974	208/230V Motor - 1/8 HP	024/030-CH*/CEW-A	534	SD
102957	208/230V Motor Hi Static - 1/4 HP	024/030-CH*/CEW-A	514	SD
Motors include capacitor				
103090	Blower Wheel - Clock Wise Rotation	024-CH*/CEW-A	137	SD
103091	Blower Wheel - CCW Rotation	024-CH*/CEW-A	116	SD
012-000033-002	Blower Wheel - Clock Wise Rotation	030-CH*/CEW-A	166	SD
012-000033-001	Blower Wheel - CCW Rotation	030-CH*/CEW-A	166	SD
112232	Blower Wheel - HI Stat CW Rotation	024-CH*/CEW-A	83	SD
112233	Blower Wheel - HI Stat CCW Rotation	024-CH*/CEW-A	83	SD
012-000033-002	Blower Wheel - HI Stat CW Rotation	030-CH*/CEW-A	166	SD
012-000033-001	Blower Wheel - HI Stat CCW Rotation	030-CH*/CEW-A	166	SD
571253	Motor Mounting Bracket	All	46	
112020	Motor Mounting Clip	All	6	SD
010-120024-001	Blower Housing	024-CH*/CEW-A	277	
010-120024-002	Blower Housing	030-CH*/CEW-A	266	
076-000364-000	Drainpan - Galv	024-CH*/CEW-A	363	
076-000323-000	Drainpan - Galv	030-CH*/CEW-A	371	
076-000369-000	Drainpan - Stainless Steel	024-CH*/CEW-A	544	
076-000370-000	Drainpan - Stainless Steel	030-CH*/CEW-A	551	
173-220045-024	CHA08 RETURN AIR PLENUM KIT	024-CH*/CEW-A	1016	
472660	3Row Water Coil	024-CH*/CEW-A	643	10 days
472662	4Row Water Coil	024-CH*/CEW-A	787	10 days
472664	5Row Water Coil	024-CH*/CEW-A	877	10 days
472666	3Row Chilled Water - 1Row Hot Water	024-CH*/CEW-A	871	10 days
472668	1Row Hot Water - 3Row Chilled Water	024-CH*/CEW-A	862	10 days
472670	4Row Chilled Water - 1Row Hot Water	024-CH*/CEW-A	1011	10 days
472672	1Row Hot Water - 4Row Chilled Water	024-CH*/CEW-A	1072	10 days
472674	3Row Chilled Water - 2Row Hot Water	024-CH*/CEW-A	874	10 days
472676	2Row Hot Water - 3Row Chilled Water	024-CH*/CEW-A	1012	10 days
472730XR	R22 DX Coil w/TXV	024-CH*-A	1222	10 days
373-260715-002	R410A Coil W/TXV	024-CH*-A	1190	10 days
472740	1Row Hot Water Coil for DX Units	024-CH*/CEW-A	495	10 days
472750	2Row Hot Water Coil for DX Units	024-CH*/CEW-A	545	10 days
472680	3Row Water Coil	030-CH*/CEW-A	775	10 days
472682	4Row Water Coil	030-CH*/CEW-A	1014	10 days
472684	5Row Water Coil	030-CH*/CEW-A	883	10 days
472686	3Row Chilled Water - 1Row Hot Water	030-CH*/CEW-A	1317	10 days
472688	1Row Hot Water - 3Row Chilled Water	030-CH*/CEW-A	872	10 days
472690	4Row Chilled Water - 1Row Hot Water	030-CH*/CEW-A	1156	10 days
472692	1Row Hot Water - 4Row Chilled Water	030-CH*/CEW-A	964	10 days
472694	3Row Chilled Water - 2Row Hot Water	030-CH*/CEW-A	1219	10 days
472696	2Row Hot Water - 3Row Chilled Water	030-CH*/CEW-A	1050	10 days
472732XR	R22 DX Coil w/TXV	030-CH*-A	1233	10 days
373-260717-001	R410A Coil W/TXV	030-CH*-A	1259	10 days
472742	1Row Hot Water Coil for DX Units	030-CH*/CEW-A	566	10 days
472752	2Row Hot Water Coil for DX Units	030-CH*/CEW-A	640	10 days

CH*/CEW-A Units COMMON REPLACEMENT PARTS



**036-CH*/
CEW-A**

DIRECT DRIVE UNCASSED FAN COIL

Part Number	Description	FITS SERIES	List Price	
102966	115V Motor - 1/10 HP	036-CH*/CEW-A	450	SD
102954	115V Motor Hi Static - 1/8 HP	036-CH*/CEW-A	497	SD
102967	208/230V Motor - 1/10 HP	036-CH*/CEW-A	460	SD
102959	208/230V Motor Hi Static - 1/8 HP	036-CH*/CEW-A	456	SD
Motors include capacitor				
103092	Blower Wheel - Clock Wise Rotation	036-CH*/CEW-A	116	SD
103093	Blower Wheel - CCW Rotation	036-CH*/CEW-A	116	SD
112021	Blower Wheel - HI Stat CW Rotation	036-CH*/CEW-A	85	SD
112022	Blower Wheel - HI Stat CCW Rotation	036-CH*/CEW-A	74	SD
571253	Motor Mounting Bracket	All	46	
112020	Motor Mounting Clip	All	6	SD
010-120024-000	Blower Housing	036-CH*/CEW-A	277	
076-000234-000	Drainpan - Galv	036-CH*/CEW-A	399	
076-000235-000	Drainpan - Stainless Steel	036-CH*/CEW-A	696	
472700	3Row Water Coil	036-CH*/CEW-A	851	10 days
472702	4Row Water Coil	036-CH*/CEW-A	953	10 days
472704	5Row Water Coil	036-CH*/CEW-A	975	10 days
472706	3Row Chilled Water - 1Row Hot Water	036-CH*/CEW-A	898	10 days
472708	1Row Hot Water - 3Row Chilled Water	036-CH*/CEW-A	942	10 days
472710	4Row Chilled Water - 1Row Hot Water	036-CH*/CEW-A	1245	10 days
472712	1Row Hot Water - 4Row Chilled Water	036-CH*/CEW-A	1263	10 days
472714	3Row Chilled Water - 2Row Hot Water	036-CH*/CEW-A	1273	10 days
472716	2Row Hot Water - 3Row Chilled Water	036-CH*/CEW-A	1247	10 days
472734XR	R22 DX Coil w/TXV	036-CH*-A	1253	10 days
373-260717-002	R410A Coil W/TXV	036-CH*-A	1253	10 days
472744	1Row Hot Water Coil for DX Units	036-CH*/CEW-A	546	10 days
472754	2Row Hot Water Coil for DX Units	036-CH*/CEW-A	586	10 days



DIRECT DRIVE VERTICAL FAN COIL

Part Number	Description	FITS SERIES	List Price
112234	BLOWER WHEEL - KV Units	018/024/030-KV	333
103050	BLOWER WHEEL - CKV Units	018/024-CKVX	148
112234	BLOWER WHEEL - CKV Units	030-CKVX	333
112174	1/4HP MOTOR - 115V	018/020/030-KV	N/A
102984	1/4HP MOTOR - 208/240V	018/020/030-KV	711
112174	1/4HP MOTOR - 115V	018/024/030-CKV	N/A
102983	1/3HP MOTOR - 115V	018/024/030-KV-A	462
102984	1/3HP MOTOR - 208/240V	018/024/030-KV-A	711
102983	1/3HP MOTOR - 115V	018/024/030-KV-B	462
102984	1/3HP MOTOR - 208/240V	018/024/030-KV-B	711
CONTACT FACTORY FOR AVAILIBLTY OF THE COILS BELOW			
470800	018-KVX L.H. DX Coil no TXV	018-KVX	748
N/A	018-CKVX R.H. DX Coil no TXV (470810)	018-CKVX	N/A
475010	018/024/030-KVX-A-3 DX No TXV	018-KVX-A	756
475018	018-KVX-B-3 DX Coil No TXV	018-KVXB	794
470830	024-KVX L.H. DX Coil no TXV	024-KVX	778
470812	024-CKVX R.H. DX Coil no TXV	024-CKVX	677
475010	018/024/030-KVX-A-3 DX No TXV	024-KVX-A	756
475013	024-KVX-B-3 DX Coil No TXV	024-KVXB	619
470860	030-KVX L.H. DX Coil no TXV	030-KVX	770
N/A	030-CKVX R.H. DX Coil no TXV (470814)	030-CKVX	N/A
475010	018/024/030-KVX-A-3 DX No TXV	030-KVX-A	756
475016	030-KVX-B-3 DX Coil No TXV	030-KVXB	753
N/A	018/024/030-CKVX-2R HW W/PUMP (470885)	018/024/030-CKVX	N/A
N/A	018/024/030-CKVX-3R HW W/PUMP (470880)	018/024/030-CKVX	N/A
N/A	018/024/030-KV-A-2R H.W Coil (475120)	018/024/030-KVX-A	N/A
475100	018/024/030-KV-A-3R H.W Coil	018/024/030-KVX-A	529
HX, HW, VX, VW DRAINPANS			
541785	HX-7.5V/HW-7.5 DRAINPAN ASSY	HX/HW	277
583637	R/P, DRAINPAN HW/HX-10	HX/HW	156
540470	VW/VX-4 SS DRAIN PAN ASSEMBLY	VX/VW	1304
540450	VX/VW-5 SS DRAINPAN ONLY	VX/VW	2118
542495	VX/VW-7.5 STAINLESS DRAINPAN	VX/VW	1417
373-270017-000	VX-10V DRAIN PAN ASSEMBLY	VX	955
373-270017-001	VW-10B DRAINPAN ASSEMBLY SS	VW	884
541285	VW-10B DRAINPAN ASSEMBLY	VW	479
542885	VX-15V DRAINPAN ASSY	VX	1012

SD
SD
SD
SD
SD

Part Number	Description	Motor Code	List Price	
702580	1/4 HP 115-1-60	B1	493	
N/A	1/4 HP 115/208/230-1-60 (702585)	B1	N/A	SD
N/A	1/3 HP 115/208/230-1-60 (702535)	B2	N/A	
702621	1/2 HP 115/208-230-1-60	B3	728	SD
702654	3/4 HP 115/208-230-1-60	B4	819	SD
702675	1 HP 115/208-230-1-60	B5	872	SD
702683	1 1/2 HP 115/208-230-1-60	B6	941	SD
702695	2 HP 115/208-230-1-60	B7	1825	SD
702404	1/2 HP 115/230-1 HIGH EFF	C1	1646	SD
702406	3/4 HP 115/230-1 HIGH EFF	C2	1121	SD
702407	1 HP 115/230-1 HIGH EFF	C3	1215	SD
N/A	2/SP 1/2 HP 115-1-60 (702589)	E1	N/A	
702106	2/SP 3/4 HP 115-1-60	E2	1229	
702107	2/SP 1 HP 115-1-60	E3	1481	
N/A	2/SP 1/2 HP 230-1-60 ODP (702634)	F1	N/A	
N/A	2/SP 3/4 HP 208-230-1 (702102)	F2	N/A	
N/A	2/SP 1 HP 208-230-1 (702103)	F3	N/A	
702821	277 1/4 HP 277-1-60	G1	684	
702822	277 1/3 HP 277-1-60	G2	750	SD
702823	277 1/2 HP 277-1-60	G3	753	SD
702824	277 3/4 HP 277-1-60	G4	764	SD
702825	277 1 HP 277-1-60	G5	779	SD
702826	277 1 1/2 HP 277-1-60	G6	1532	SD
702827	277 2 HP 277-1-60	G7	2510	SD
N/A	2/SP 1/2 HP 208-230-3 (702212)	K1	N/A	
N/A	2/SP 1/2 HP 460-3 (702216)		N/A	
N/A	2/SP 3/4 HP 208-230-3 (702213)	K2	N/A	
N/A	2/SP 3/4 HP 460-3 (702249)		N/A	
N/A	2/SP 1 HP 208-230-3 (702214)	K3	N/A	
N/A	2/SP 1 HP 460-3 (702250)		N/A	
N/A	2/SP 1 1/2 HP 208-230-3 (702215)	K4	N/A	
N/A	2/SP 1 1/2 HP 460-3 (702253)		N/A	
N/A	2/SP 2 HP 230-3 (702230)	K5	N/A	
N/A	2/SP 2 HP 460-3 (702254)		N/A	
N/A	2/SP 3 HP 460-3 (702255)	K6	N/A	
N/A	2/SP 5 HP 230-3 (702233)	K7	N/A	
N/A	2/SP 5 HP 460-3 (702234)		N/A	
012-001063-000	1/2 HP 208-230/460-3 HIGH EFF - 5/8 SHAFT (NOTE 1)	L1	995	SD
012-001057-000	3/4 HP 208-230/460-3 HIGH EFF - 5/8 SHAFT (NOTE 1)	L2	1095	SD
010-110008-000	1 HP 208-230/460-3 NEMA PREM - 7/8 SHAFT (NOTE 1)	L3	1592	SD
010-110009-000	1-1/2 HP 208-230/460-3 NEMA PREM - 7/8 SHAFT (NOTE 1)	L4	1665	SD
010-110010-000	2 HP 208-230/460-3 NEMA PREM - 7/8 SHAFT (NOTE 1)	L5	1765	SD
010-110011-000	3 HP 208-230/460-3 NEMA PREM - 1 1/8 SHAFT (NOTE 1)	L6	1785	SD
010-110012-000	5 HP 208-230/460-3 NEMA PREM - 1 1/8 SHAFT (NOTE 1)	L7	2071	SD
010-110013-000	7.5 HP 208-230/460-3 NEMA PREM - 1 3/8 SHAFT (NOTE 1)	L8	2713	SD
010-110015-000	10 HP 208-230/460-3 NEMA PREM - 1 3/8 SHAFT (NOTE 1)	L9	2769	
010-110017-000	1/2 HP 575-3 HIGH EFF	N1	995	
N/A	3/4 HP 575-3 HIGH EFF (010-110018-000)	N2	N/A	
010-110019-000	1 HP 575-3 HIGH EFF	N3	1592	
010-110020-000	1-1/2 HP 575-3 HIGH EFF	N4	1665	
010-110021-000	2 HP 575-3 HIGH EFF	N5	1765	
010-110022-000	3 HP 575-3 NEMA PREMIUM	N6	1785	
010-110023-000	5 HP 575-3 NEMA PREMIUM	N7	2071	
010-110024-000	7.5 HP 575-3 NEMA PREMIUM	N8	2977	
010-110025-000	10 HP 575-3 NEMA PREMIUM	N9	3314	

NOTES:

1. The "L" model replacement motors may have different shaft size than original motor and therefore may require pulley change.
2. Motors on this page do not require purchase of separate capacitor (either not used or provided within the motor).

STANDARD DRIVES



DRIVES

MOTOR / BLOWER PULLEYS

Part Number	Description	Bore ID	Min PD	Max PD	OD	List Price
703600	MOTOR SHEAVE 1VL 34 x 1/2	0.5	2.4	3.2	3.15	69
703610	MOTOR SHEAVE 1VL 34 x 5/8	0.625	2.4	3.2	3.15	69
103620	MOTOR SHEAVE 1VL40 X 1/2	0.5	2.7	3.7	3.75	86
103630	MOTOR SHEAVE 1VL40 X 5/8	0.625	2.7	3.7	3.75	86
703640	MOTOR SHEAVE 1VP40 X 7/8	0.875	2.7	3.7	3.75	135
103650	MOTOR SHEAVE 1VL44 X 1/2	0.5	3.1	4.1	4.15	109
103660	MOTOR SHEAVE 1VL44 X 5/8	0.625	3.1	4.1	4.15	109
703661	MOTOR SHEAVE 1VP44 X 7/8	0.875	3.1	4.1	4.15	154
703662	MOTOR SHEAVE 1VP44 X 1 1/8	1.125	3.1	4.1	4.15	165
703668	MOTOR SHEAVE 1VP50 X 1 1/8	1.125	3.7	4.7	4.75	185
703665	MOTOR SHEAVE 1VP50 X 1/2	0.5	3.7	4.7	4.75	172
703666	MOTOR SHEAVE 1VP50 X 5/8	0.625	3.7	4.7	4.75	172
703667	MOTOR SHEAVE 1VP50 X 7/8	0.875	3.7	4.7	4.75	185
703683	MOTOR SHEAVE 1VP56 X 1 1/8	1.125	4.3	5.3	5.35	251
703681	MOTOR SHEAVE 1VP56 X 5/8	0.625	4.3	5.3	5.35	192
703682	MOTOR SHEAVE 1VP56 X 7/8	0.875	4.3	5.3	5.35	251
703669	MOTOR SHEAVE 1VP60 X 1 3/8	1.375	3.7	4.7	4.75	238
703686	MOTOR SHEAVE 1VP62 X 1 1/8	1.125	4.5	5.5	5.95	264
703684	MOTOR SHEAVE 1VP62 X 5/8	0.625	4.5	5.5	5.95	264
703685	MOTOR SHEAVE 1VP62 X 7/8	0.875	4.5	5.5	5.95	264
703689	MOTOR SHEAVE 1VP65 X 1 1/8	1.125	4.8	6	6.5	275
703687	MOTOR SHEAVE 1VP65 X 1 3/8	1.375	4.8	6	6.5	275
703688	MOTOR SHEAVE 1VP65 X 7/8	0.875	4.8	6	6.5	275
703692	MOTOR SHEAVE 1VP68 X 1 1/8	1.125	5.1	6.1	6.55	276
703690	MOTOR SHEAVE 1VP68 X 5/8	0.625	5.1	6.1	6.55	276
703691	MOTOR SHEAVE 1VP68 X 7/8	0.875	5.1	6.1	6.55	276
703695	MOTOR SHEAVE 1VP71 X 1 1/8	1.125	5.4	6.6	7.1	290
703693	MOTOR SHEAVE 1VP71 X 1 3/8	1.375	5.4	6.6	7.1	471
703694	MOTOR SHEAVE 1VP71 X 7/8	0.875	5.4	6.6	7.1	290
703698	MOTOR SHEAVE 1VP75 X 1 1/8	1.125	5.8	7	7.5	391
703696	MOTOR SHEAVE 1VP75 X 1 3/8	1.375	5.8	7	7.5	391
703697	MOTOR SHEAVE 1VP75 X 7/8	0.875	5.8	7	7.5	391

NOTE: SHEAVES BELOW REQUIRE HUB AND KEYSTOCK - MATCH EXISTING BORE AND KEYSTOCK SIZE

012-000162-001	BLOWER SHEAVE AK41H				3.95	123
103667	BLOWER SHEAVE AK46H				4.45	123
103776	BLOWER SHEAVE AK64H				6.25	137
103777	BLOWER SHEAVE AK84H				8.25	151
012-000161-001	BLOWER SHEAVE BK45H				4.25	123
012-000159-001	BLOWER SHEAVE BK70H				6.75	144
012-000160-001	BLOWER SHEAVE BK75H				7.25	182
010-197246-001	BLOWER SHEAVE BK80H				7.75	182
103802	BLOWER SHEAVE BK90H				8.75	182
103804	BLOWER SHEAVE BK100H				9.75	203
103805	BLOWER SHEAVE BK110H				10.75	221
103808	BLOWER SHEAVE BK120H				11.75	243
103811	BLOWER SHEAVE BK130H				12.75	268
103832	BLOWER PULLEY HUB H-3/4	0.750				66
103833	BLOWER PULLEY HUB H-1	1.000				66
103840	R/P, KEYSTOCK 3/16X3/16X1 1/4					7
103850	R/P, KEYSTOCK 1/4 X 1/4 X 1 1/4					11

Be sure to add the HUB and KEYSTOCK Below!

ID = inside diameter

PD = pitch diameter

OD = outside diameter

1. Pitch diameters are used in calculation of RPM at fan shaft
2. Outside diameter is measured at the outside of the pulley and is used to identify which pulley is installed.
3. Bore ID: Note that motor shaft and fan shaft sizes differ so be sure to select the pulley with correct shaft hole diameter.

708321	TOUCH UP PAINT - GRAY	12 OZ SPRAY CAN	61
708321-PEN	TOUCH UP PAINT - GRAY	Paint Pen	61
708316	TOUCH UP PAINT - POLAR ICE	12 OZ SPRAY CAN	61
708316-PEN	TOUCH UP PAINT - POLAR ICE	Paint Pen	61
708310	TOUCH UP PAINT - BEIGE	12 OZ SPRAY CAN	61
708310-PEN	TOUCH UP PAINT - BEIGE	Paint Pen	61



Part Number	Description	FITS SERIES	List Price	
RP101887	24.75 X 10.75 X 1 TA (BOX OF 12)	DH	625	SD
RP101889	20.75 X 12.75 X 1 TA (BOX OF 12)	DH	625	SD
RP101891	27 X 12.75 X 1 TA (BOX OF 12)	DH	629	SD
RP101893	33.75 X 12.75 X 1 TA (BOX OF 12)	DH	695	SD
RP101726	8 X 19 1/4 X 1 TA (BOX OF 12)	DV	570	SD
RP101547	12 X 20 X 1 TA (BOX OF 12)	DV	565	SD
RP101750	16 X 20 X 1 STD T/A (BOX OF 12)	DV	220	SD
RP101549	16 X 25 X 1 TA (BOX OF 12)	DV	220	SD
RP101757	10 X 15 X 1 THROW AWAY (BOX OF 12)	CH	544	SD
RP101758	10 X 18 X 1 THROW AWAY (BOX OF 12)	CH	544	SD
RP101759	10 X 27 X 1 THROW AWAY (BOX OF 12)	CH	594	SD
RP101760	10 X 36 X 1 THROW AWAY (BOX OF 12)	CH	630	SD
RP101761	10 X 45 X 1 THROW AWAY (BOX OF 12)	CH	744	SD
RP101762	10 X 54 X 1 THROW AWAY (BOX OF 12)	CH	788	SD
RP101701	8 5/8X21 5/8X1 TA EXCT (BOX OF 12)	FFW	571	SD
RP101703	8 5/8X25 5/8X1 TA EXCT (BOX OF 12)	FFW	497	SD
RP101744	8 5/8X31 5/8X1 TA EXCT (BOX OF 12)	FFW	551	SD
RP101746	8 5/8X43 5/8X1 TA EXCT (BOX OF 12)	FFW	624	SD
RP101747	8 5/8X57 5/8X1 TA EXCT (BOX OF 12)	FFW	744	SD
RP101748	8 5/8X65 5/8X1 TA EXCT (BOX OF 12)	FFW	608	SD
RP101750	16 X 20 X 1 STD T/A (BOX OF 12)	DU	220	SD
RP101752	18 X 24 X 1 STD T/A (BOX OF 12)	DU	303	SD
RP101754	20 X 25 X 1 STD T/A (BOX OF 12)	DU	205	SD
RP101756	30 X 20 X 1 STD T/A (BOX OF 12)	DU	326	SD
RP101898	10 X 10 X 2 THROW AWAY (BOX OF 12)	VARIOUS	282	SD
RP011-800002-000	12 X 20 X 2 T/A (BOX OF 12)	VARIOUS	424	SD
RP011-800001-000	12 X 25 X 2 T/A (BOX OF 12)	VARIOUS	671	SD
RP101880	16 X 20 X 2 T/A (BOX OF 12)	VARIOUS	274	SD
RP101882	16 X 25 X 2 T/A (BOX OF 12)	VARIOUS	283	SD
RP101888	16 X 32 X 2 T/A (BOX OF 12)	VARIOUS	776	SD
RP101884	20 X 20 X 2 T/A (BOX OF 12)	VARIOUS	283	SD
RP101886	20 X 25 X 2 T/A (BOX OF 12)	VARIOUS	328	SD
RP101894	20 X 32 X 2 T/A (BOX OF 12)	VARIOUS	844	SD
RP101890	22.5 X 22.5 X 2 TA (BOX OF 12)	VARIOUS	776	SD
RP101885	22.5 X 25 X 2 TA (BOX OF 12)	VARIOUS	732	SD
RP101897	24 X 36 X 2 T/A (BOX OF 12)	VARIOUS	727	SD
RP101881	25 X 25 X 2 TA (BOX OF 12)	VARIOUS	280	SD
RP101763	30 X 36 X 2 TA (BOX OF 12)	VARIOUS	594	SD
RP011-800002-002	10 X 10 X 2 PLEATED (BOX OF 12)	VARIOUS	497	SD
RP011-800002-001	12 X 20 X 2 PLEATED (BOX OF 12)	VARIOUS	342	SD
RP011-800001-001	12 X 25 X 2 PLEATED (BOX OF 12)	VARIOUS	625	SD
RP701766	12 X 24 X 2 PLEATED (BOX OF 12)	VARIOUS	368	SD
RP010-090001-000	14 X 20 X 2 PLEATED (BOX OF 12)	VARIOUS	408	SD
RP701743	16 X 20 X 2 PLEATED (BOX OF 12)	VARIOUS	340	SD
RP701745	16 X 25 X 2 PLEATED (BOX OF 12)	VARIOUS	450	SD
RP701750	16 X 32 X 2 PLEATED (BOX OF 12)	VARIOUS	860	SD
RP701755	20 X 20 X 2 PLEATED (BOX OF 12)	VARIOUS	458	SD
RP010-090002-000	20 X 24 X 2 PLEATED (BOX OF 12)	VARIOUS	537	SD
RP701760	20 X 25 X 2 PLEATED (BOX OF 12)	VARIOUS	522	SD
RP010-090003-000	20 X 30 X 2 PLEATED (BOX OF 12)	VARIOUS	821	SD
RP701761	20 X 32 X 2 PLEATED (BOX OF 12)	VARIOUS	927	SD
RP701765	22.5 X 22.5 X 2 PLEATED (BOX OF 12)	VARIOUS	862	SD
RP701762	25X25X2 PLEATED (BOX OF 12)	VARIOUS	399	SD

COMMON THERMAL EXPANSION VALVES



TXV's

R22	Part Number	Fits Models*	Description	List Price
	012-000035-001	DHB04,DVA04/CHA04	1 Ton R22	286
	012-000028-001	24-BHX, 24-HBAX, HBB08 24-BVX, 24-BVX-B, 24-BVX-D, BVE08 VX-2V, VX-2-D, VXEA08, VXEB08 24-BMX, BMB08, 24-BRX, BRD08	IVE-2 - R22	268
	012-000029-001	36-BHX, 36-HBAX, HBB12 36-BVX, 36-BVX-B, 36-BVX-D, BVE12 VX-3V, VX-3-D, VXEA12, VXEB12 36-BMX, BMB12, 36-BRX, BRD12	IVE-3 - R22	288
	012-000032-001	48-BHX, 48-HBAX, HBB16 48-BVX, 48-BVX-B, 48-BVX-D, BVE16 VX-4V, VX-4-D, VXEA16, VXEB16 48-BMX, BMB16, 48-BRX, BRD16	IVE-4 - R22	268
	012-000031-001	60-BHX, 60-HBAX, HBB20 60-BVX, 60-BVX-B, 60-BVX-D, BVE20 VX-5V, VX-5-D, VXEA20, VXEB20 60-BMX, BMB20, 60-BRX, BRD20	CBBIVE-5	288
	100740	90-BHX, 90-HBAX, HBB30 90-BVX, 90-BVX-B, BVE30 VX-7.5, VXEA30, VXEB30, HX-7.5 90-BMX, BMB30, 90-BRX, BRD30 HBB60 (2 Req'd), BRD60 (2 Req'd)	SVE-8 - R22	480
	100747	120-BHX, 120-HBAX, HBB40 120-BVX, 120-BVX-B, BVE30 VX-10V, VXEA40, VXEB40, HX-10 120-BMX, BMB40, 120-BRX, BRD40 240-BMX (2 Req'd), BMB80 (2 Req'd)	SVE-10 - R22	397
	012-00271-001	180-BHX, 180-HBAX, VX-15, 180-BMX, 180-BRX	PVE-16 - R22	570
	RP010-070025-002	018-DUX-A, 018-DUX-B 024-DUX-A, 024-DUX-B 030-DUX-A, 030-DUX-B DHB06,DHB08,DVA06,DVA08	CBBIVE-2 - R22	350
	RP100832	036-DUX-A, 036-DUX-B, 042-DUX-A, 042-DUX-B	Y1132-CBBIVE-3 - R22	267
	N/A	048-DUX-A, 048-DUX-B (RP100833)	Y1132-CBBIVE-4 R22	N/A
	100835	060-DUX-A, 060-DUX-B	Y1132-CBBIVE-5 R22	119
	RP010-070025-003	DHB10, DVA10	CBBIVE-3-GA	400
	RP010-070025-004	DUB14, DUB16, DUC14, DUC16	CBBIVE-4-GA	372
	RP010-070025-005	DUC20	CBBIVE-5-GA	370

R410A	Part Number	Fits Models*	Description	Connection Style	List Price
	010-070003-002	HBB08, BVE08, BRD08, BMB08	CBBIZE-2 - R410A	SWEAT	314
	010-070003-003	HBB12, BVE12, BRD12, BMB12	CBBIZE-3 - R410A	SWEAT	292
	010-070003-004	HBB16, BVE16, BRD16, BMB16	CBBIZE-4 - R410A	SWEAT	326
	010-070003-005	HBB20, BVE20, BRD20, BMB20	CBBIZE-5 - R410A	SWEAT	292
	010-070022-000	HBB30, BVE30, BRD30, BMB30	BBIZE-8 - R410A	SWEAT	310
	010-070032-000	HBB40, BVE40, BRD40, BMB40	BBIZE-12.5 - R410A	SWEAT	454
	012-000034-001	DHB04,DVA04/CHA04	CBBIZE-1 - R410A	SWEAT	314
	RP010-070023-002	DHB06, DHB08, DVA06, DVA08	CBBIZE-2 - R410A	CHATLEFF	425
	RP010-070023-003	DHB10, DVA10	CBBIZE-3 - R410A	CHATLEFF	438
	RP010-070023-004	DUC16	CBBIZE-4 - R410A	CHATLEFF	396
	RP010-070023-005	DUC20	CBBIZE-5 - R410A	CHATLEFF	559

Notes:

FOR USE IN STANDARD CAPACITY SINGLE CIRCUIT COILS

FOR DUC VALVES PLEASE REFER TO THE UNIT PRICE PAGES OR NEWMAGIC4 SOFTWARE

R410A TXV's - Note connection style is either sweat or Chatleff threaded pattern for use with threaded "accurater" distributors.

For Changing older coils from R22 to R410A by just changing out TXV's the following rules apply:

If coil is used for Cooling only then changing out the TXV is acceptable for unit size 40 (10 ton) or smaller

If coil is used in heap pump application then changing out TXV is acceptable provided that;

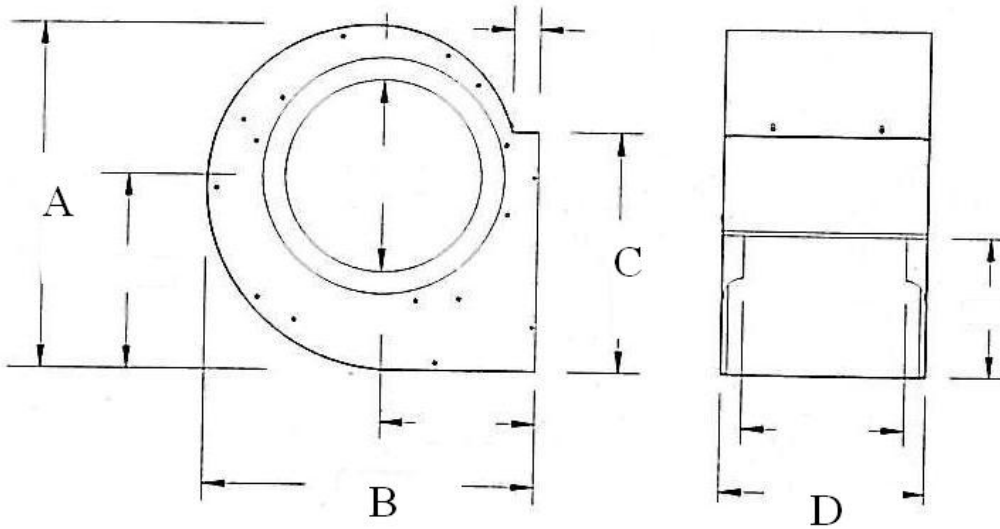
a: Coil was manufactured after October of 2008

b: Unit is size 40 (10 ton) or smaller

Heat Pump Capability: TXV's with "C" Prefix have internal check valve and bypass and are heat pump compatible with no need for heat pump kit (HPK). All others require HPK for heat pump service. Refer to Accessories Price Sheet or NewMagic4 software.



BELT DRIVE REPLACEMENT BLOWER



Housing Dimensions (in)

Part Number	Part Description	A	B	C	D	Wheel Dia	Wheel Width	List Price
010-120003-000*	BLOWER 90-6T BD 0.75 X 14.62	12.5	12.75	10.25	8.25	9	6	723
102995R*	R/P, 90-6R BD .75 BLOWER ASSY	15.68	15.18	10.25	8.25	9	6	730
102999R*	R/P, BLOWER ASSY 90-9R BD #05-	15.68	15.18	10.25	11.81	9	9	784
103078*	R/P, 100-6R BD 0.75	17.43	16.75	11.37	8.25	10	6	715
103029R*	R/P, A10-10 COMPLETE BLOWER	17.43	16.75	11.37	13.12	10	10	730
103039R*	R/P, 120-6R BD .75 BLWR ASSY	20.5	19.37	13.5	8.81	12	6	860
103040R*	R/P, 120-9R COMPLETE BLOWER	20.5	19.37	13.5	12.25	12	9	915
103052*	R/P, 120-12R BD BLOWER ASSY	20.5	19.37	13.5	15.62	12	12	986
010-120016-000R**	R/P, 150-9R BLOWER ASSY	24.25	22.68	15.87	12.81	15	9	1073
010-120017-001**	R/P, BLOWER 150-12R TWIN	24.25	22.68	15.87	16.12	15	12	2459
103053**	R/P, A15-15 COMPLETE BLOWER	24.25	22.68	15.87	18.62	15	15	1144
103056**	R/P, G18-18 COMPLETE BLOWER	29	27	18.87	21.87	18.5	18.5	2519

SD
SD
SD
SD
SD
SD
SD
SD
SD
SD

THESE ARE FOR BELT DRIVE BLOWERS ONLY.

REPLACEMENT PART WILL INCLUDE - WHEEL, HOUSING, SHAFT, BEARINGS, BEARING BRACKET, AND BLOCKOFF

* Fan Shaft OD is 3/4"

** Fan Shaft OD is 1"

BELTS



BELTS

Part Number	Description		List Price	
103304	BELT 4L330		18	SD
103305	BELT 4L340		18	SD
103306	BELT 4L350		20	SD
103307	BELT 4L360		20	SD
703307	BELT 4L370		20	SD
103308	BELT 4L380		17	SD
703310	BELT 4L390		20	SD
103320	BELT 4L400		17	SD
103330	BELT 4L410		21	SD
703340	BELT 4L420		21	SD
703345	BELT 4L430		21	SD
703350	BELT 4L440		21	SD
703360	BELT 4L450		21	SD
103370	BELT 4L460		23	SD
703380	BELT 4L470		21	SD
103381	BELT 4L480		21	SD
703385	BELT 4L490		21	SD
703400	BELT 4L500		23	SD
703401	BELT 4L510		23	SD
703410	BELT 4L520		23	SD
703523	BELT B-46		48	SD
703526	BELT B-49		49	SD
703527	BELT B-50		49	SD
703528	BELT B-51		52	SD
703529	BELT B-52		31	SD
703530	BELT B-53		32	SD
703531	BELT B-54		32	SD
703532	BELT B-55		32	SD
703533	BELT B-56		32	SD
703534	BELT B-57		37	SD
703535	BELT B-58		32	SD
703536	BELT B-59		38	SD
703537	BELT B-60		38	SD
703538	BELT B-61		38	SD
703539	BELT B-62		38	SD
703540	BELT B-63		41	SD
703541	BELT B-64		41	SD
703542	BELT B-65		41	SD
703543	BELT B-66		41	SD
703544	BELT B-67		44	SD
703545	BELT B-68		44	SD
703546	BELT B-69		44	SD
703547	BELT B-70		44	SD
703552	BELT B-71		68	SD
703553	BELT B-72		75	SD

Belt Drive Units sold prior to 2021 had either Lovato or GE Starters/Contactors/Overloads. Lovato parts are listed below.

The GE Starters and Contactors previously used are no longer available. They have been obsoleted by the manufacturer. Please follow the following steps for converting to the Lovato equivalent.

1) Does the field motor have automatic thermal overloads (ATC)?
 If No, a starter and overload relay is needed.
 If Yes, a relay or contactor can be used.

2) What is the motor horsepower?

3) What is the motor voltage (in use) and the Full Load Amps (FLA) rating?

Refer to **existing** motor nameplate to determine voltage and FLA. To the right is an example of a nameplate where the motor can be operated at three different voltages. The motor has 230/460 and FLA is 1.72/.861. This means if the motor is operating at 230, it will draw 1.72A. At 460V, it will draw .861A, and at 208V it will draw 1.9A. The nameplate has at the bottom an internal wire diagram that shows how it would be wired internally for a given voltage (one way for 208V and 230V, another way for 460V).



4) Select the contactor from the table below that

Starter/Overload for Belt Drive AHU with Motor Start/Stop Station (MSS)



Starter

Examples:

3 HP, 115V, 32A, no ATC

Select 012-001585-000 contactor as it is the only one rated for 3 HP at 115V(120V).

Select 012-001588-000 overload relay as it is the only one rated to 32A

7.5HP,480V, 9.7 A, no ATC

Any of the contactors will work, I'd use the less costly 012-001583-000,

Select starter 012-001588-000.

STARTER / CONTACTOR		
Voltage/Phase	Maximum HP	Starter PN:
120V/1	Up to 2 HP	012-001583-000
	Up to 3 HP	012-001585-000
240V/1	Up to 3 HP	012-001583-000
	Up to 5 HP	012-001584-000
	Up to 7.5 HP	012-001585-000
200V/3	Up to 5 HP	012-001583-000
	Up to 7.5 HP	012-001584-000
	Up to 10 HP	012-001585-000
240V/3	Up to 5 HP	012-001583-000
	Up to 7.5 HP	012-001584-000
	Up to 10 HP	012-001585-000
480V/3	Up to 10 HP	012-001583-000
	Up to 15 HP	012-001584-000
	Up to 30 HP	012-001585-000
600V/3	Up to 15 HP	012-001583-000
	Up to 20 HP	012-001584-000
	Up to 30 HP	012-001585-000

STARTER / CONTACTOR		
Part Number	Description	List Price
012-001583-000	R/P, CONT 25A/3P/24V DPBF1210A	165
012-001584-000	CONTACTOR 30A/3P/24V DPBF1810A	200
012-001585-000	CONTACTOR 40A/3P/24V DPBF2600A	353

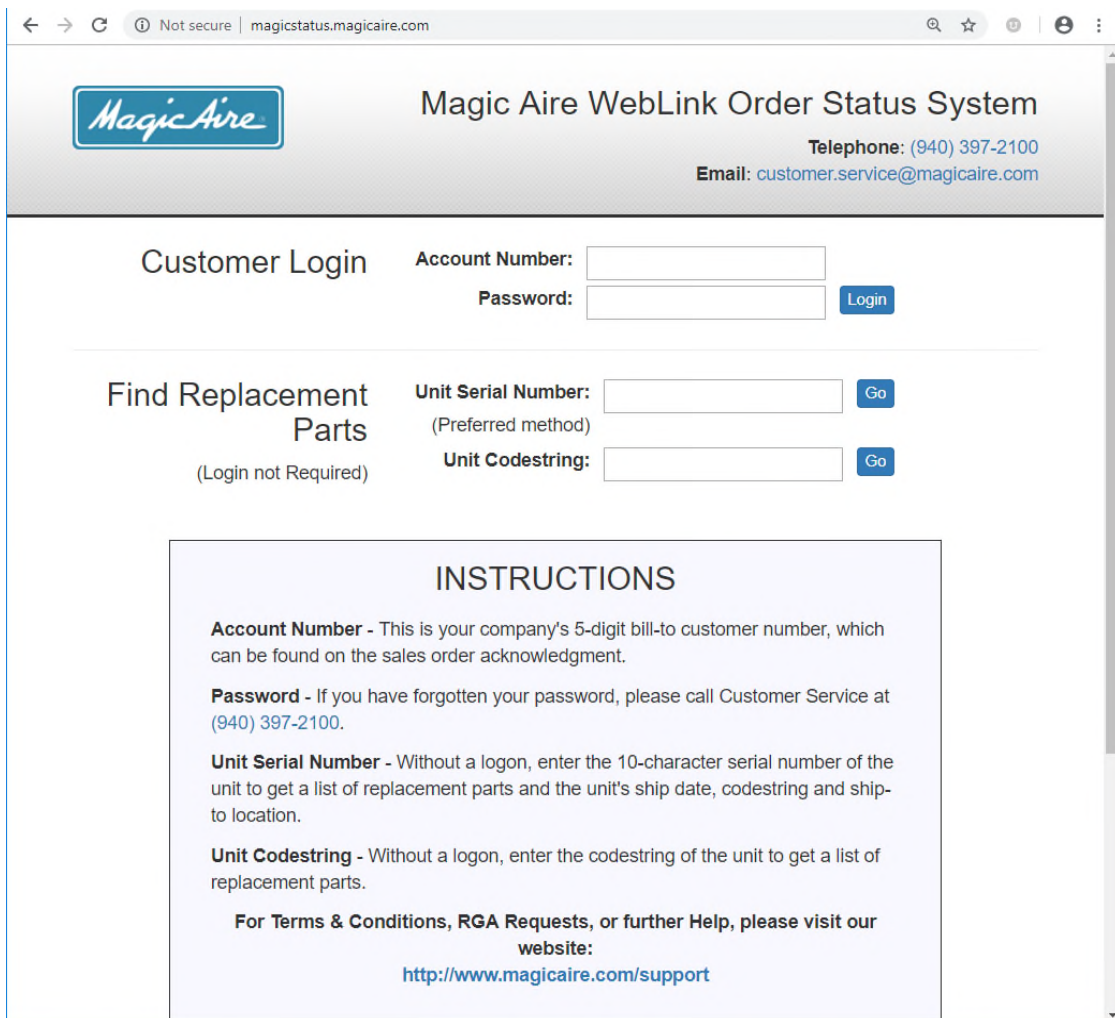
OVERLOAD			
Part Number	Description	RANGE	List Price
012-001586-000	OVERLOAD 0.4-2A RFE450200	.4-2.0A	347
012-001587-000	R/P, OVERLOAD 1.6-8A	1.6-8.0A	347
012-001588-000	OVERLOAD 6.4-32A RFE45320	6.4-32.0A	347

To obtain replacement part numbers and pricing for these models please visit our RPL system on www.magicaire.com

From our homepage - select the box order status/Replacement Parts, then select the link "Replacement Parts" under the DP Products Replacement Parts. You will not need a log in to access the parts side.

From there enter either the unit serial number or full model number in the box shown

After entering on of those two items you will be able to get a specific parts list for that model.



The screenshot shows a web browser window with the URL magicstatus.magicaire.com. The page title is "Magic Aire WebLink Order Status System". The Magic Aire logo is in the top left. Contact information is listed: Telephone: (940) 397-2100 and Email: customer.service@magicaire.com.

There are two main sections:

- Customer Login:** Includes fields for "Account Number:" and "Password:" with a "Login" button.
- Find Replacement Parts:** Includes fields for "Unit Serial Number:" (with a "Go" button) and "Unit Codestring:" (with a "Go" button"). Below the "Unit Serial Number" field, it says "(Preferred method)". Below the "Unit Codestring" field, it says "(Login not Required)".

An "INSTRUCTIONS" box is located below the "Find Replacement Parts" section. It contains the following text:

Account Number - This is your company's 5-digit bill-to customer number, which can be found on the sales order acknowledgment.

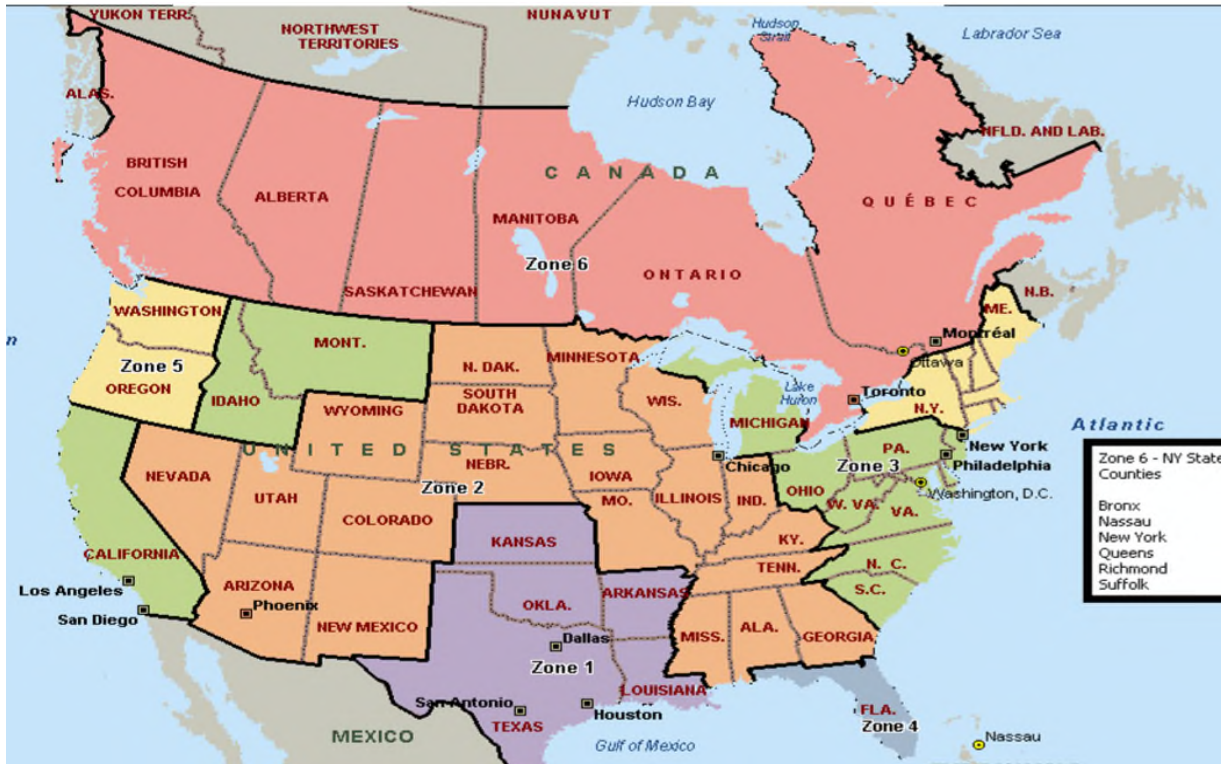
Password - If you have forgotten your password, please call Customer Service at (940) 397-2100.

Unit Serial Number - Without a logon, enter the 10-character serial number of the unit to get a list of replacement parts and the unit's ship date, codestring and ship-to location.

Unit Codestring - Without a logon, enter the codestring of the unit to get a list of replacement parts.

For Terms & Conditions, RGA Requests, or further Help, please visit our website:
<http://www.magicaire.com/support>

FREIGHT COST ADDERS



Standard Delivery	Zone 1: Add 3.0% of List Price	Zone 4: Add 4.6% of List Price
	Zone 2: Add 4.2% of List Price	Zone 5: Add 5.5% of List Price
	Zone 3: Add 4.5% of List Price	Zone 6: Add 9.0% of List Price

Zone 6 -- Canada Minimum freight charge of \$125

Expedited Shipping

2-Day Expedite	Zone 1: Add 8.5% of List Price	Zone 3: Add 11% of List Price
	Zone 2: Add 10% of List Price	Zone 4: Add 12% of List Price
3-Day Expedite	Zone 5: Add 12% of List Price	Zone 6: Add 14% of List Price

Unless Ground Shipment (Standard Delivery) is noted on the purchase order, replacement parts will ship Expedited.

NON-SUPPORTED MODELS

Non-Supported Models
CCX
CHX
DHW-18/24
DHX-18/24
DVW-18/24
DUP (prior to Rev. B except those listed on p.11)
DUX (prior to Rev. B except those listed on p.11)
DVX-18/24
FHY
HHW
HWBC
HX
KV (except those listed on p.20)
MAHBC
MAVBC
VHW
VW
VWAH
VWBC
VXAH



BELT DRIVE - HORIZONTAL AIR HANDLER

Current	Previous		
HBB	HBAW, HBAX, BHW, BHX, HWBC, MAHBC		

BELT DRIVE - VERTICAL AIR HANDLER

Current	Previous		
BVE	BVW-D, BVX-D, BVW-B, BVX-B, BVW-A, BVX-A, VWBC, MAVBC		

BELT DRIVE - MODULAR AIR HANDLER

Current	Previous		
BMB	BMW-A, BMX-A, BMW, BMX, VWAH, VXAH		

DIRECT DRIVE - HORIZONTAL FAN COIL

Current	Previous		
CHA	CHX-A, CEW-A, CHX, CHP		
DHB	DHW-A, DHX-A, DHW, DHX, DHW-18/24		
N/A	CCX		

DIRECT DRIVE - VERTICAL FAN COIL

Current	Previous		
DVB	DVA, DVW, DVX		
N/A	KVX, KVP		

DIRECT DRIVE - UNIVERSAL FAN COIL

Current	Previous		
DUC	DUX-B, DUW-B, DUW-A, DUX-A, DUW, DUX, DUP-B, DUP-A, DUP		

DUCT COIL - HORIZONTAL

Current	Previous		
HWB, HXB	HW, HX		

DUCT COIL - VERTICAL

Current	Previous		
VWF, VXF	VW, VX		

Current Unit Size	Nominal CFM	Nominal Tons	Old Size Designation
02	200	0.5	006
04	400	1	012
06	600	1.5	018
08	800	2	024
10	1000	2.5	30
12	1200	3	036
16	1600	4	048
20	2000	5	060
30	3000	7.5	090
40	4000	10	120
60	6000	15	180
80	8000	20	240