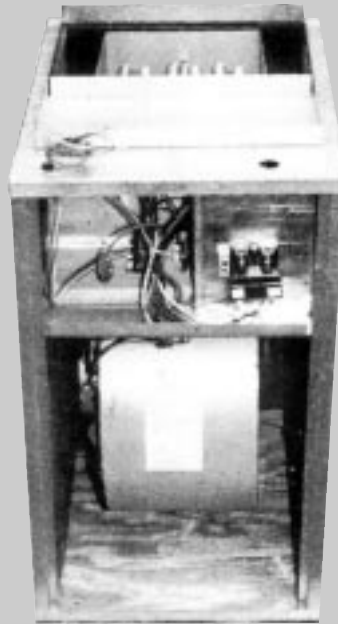


Magic Aire®

DUS-A SERIES

Sizes from 800 to 2000 CFM

ELECTRIC/HOT WATER FURNACES



UPFLOW / DOWNFLOW / HORIZONTAL

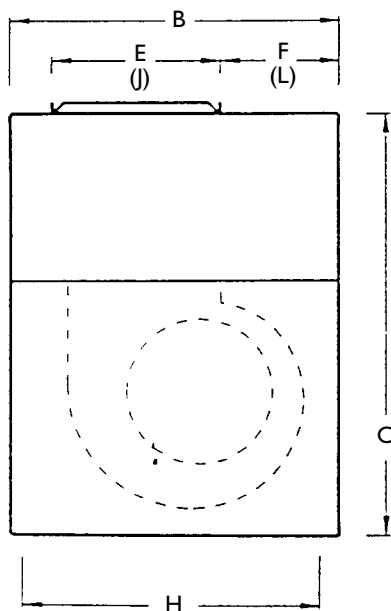
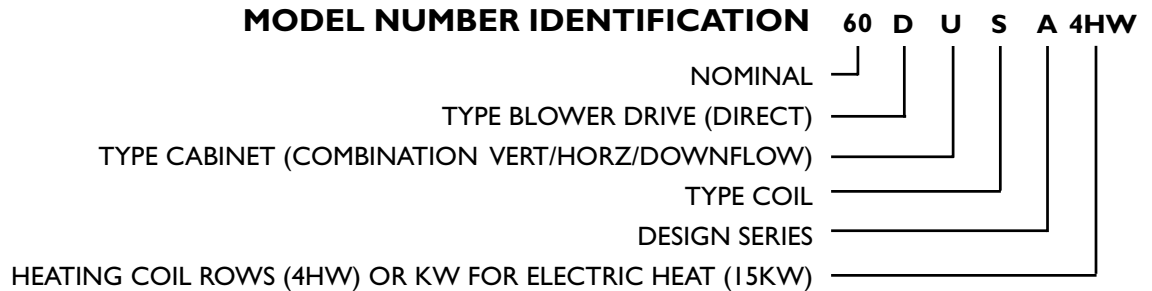
- Heavy gauge galvanized steel.
- Entire cabinet constructed out of painted metal for an attractive appearance.
- All electrical components installed and wired at the factory.
- Each unit given both dielectric test and run test before shipment.
- Electric heat is available up to 20 KW on some models.
- Hot water heat available in 2, 3 and 4 row on some models
- Each cabinet fully insulated with high density insulation.



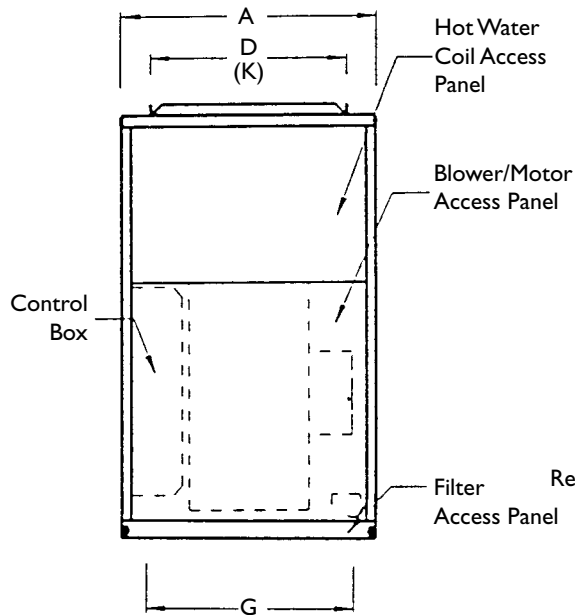
**MAGIC AIRE DUS-A SERIES FAN COILS ARE ETL
LISTED IN ACCORDANCE WITH UL 1995
AND ARE ASSEMBLED TO ORDER FOR COMPETITIVE DELIVERY.**

United Electric Co., L.P. • 501 Galveston • Wichita Falls, TX 76301 • 940-397-2100 • Fax: 940-397-2166

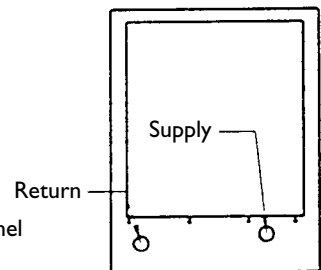
MODEL NUMBER IDENTIFICATION



Left View



Front View



Top View

UNIT DIMENSIONAL INFORMATION												
MODEL	A	B	C	D	E	F	G	H	J	K	L	WT.#
24	17.5	22.0	28.0	15.0	16.5	4.63	14.31	18.25	11.25	13.56	8.06	135
36	20.0	25.0	28.0	17.0	19.5	4.63	16.31	22.25	12.25	14.75	10.06	145
48	22.0	27.0	29.0	19.0	21.5	4.63	18.31	23.25	12.25	15.56	10.06	158
60	24.0	31.0	31.0	21.0	25.5	4.63	18.31	28.25	13.88	16.94	10.44	190

MODEL	HOT WATER		FILTER 1"	MOTOR		
	SUPPLY	RETURN		HP	AMPS/115	AMPS/230
24	5/8	5/8	16 X 20	1/4	2.9	1.3
36	5/8	5/8	18 X 24	1/3	4.0	2.2
48	7/8	7/8	20 X 25	3/4	7.0	3.6
60 ₄	7/8	7/8	20 X 30	1/2	8.1	4.1
60 ₂	7/8	7/8	20 X 30	3/4	7.0	3.6

NOTES:

1. Dimensions D, E, & F are for no heat and hydronic heat units. Dimensions J, K, & L apply to electric heat units only.

2. Hot water heat units are 3/4HP 115/1/60.

3. Hot water pump module (not shown) is 115v (.52 FLA).

4. No heat and electric heat units are 1/2 HP 230/1/60.

AIRFLOW DATA DUS-A SERIES FAN COIL CFM @ .00 – .50" ESP

24			
ESP	ELEC. OR NO HEAT	W/ 2HW	W/ 3HW
0.50	660	610	587
0.40	735	676	651
0.30	805	739	712
0.20	870	799	770
0.10	932	856	826
0.00	991	911	879

36			
ESP	ELEC. OR NO HEAT	W/ 2HW	W/ 3HW
0.50	1056	963	920
0.40	1147	1053	1010
0.30	1226	1131	1089
0.20	1297	1202	1160
0.10	1362	1267	1225
0.00	1423	1327	1285

48			
ESP	ELEC. OR NO HEAT	W/ 2HW	W/ 3HW
0.50	1426	1243	1193
0.40	1534	1348	1296
0.30	1629	1442	1389
0.20	1716	1527	1473
0.10	1797	1606	1552
0.00	1871	1680	1625

60			
ESP	ELEC. OR NO HEAT	W/ 2HW	W/ 3HW
0.50	1586	1566	1523
0.40	1715	1695	1654
0.30	1830	1810	1770
0.20	1935	1915	1865
0.10	2032	2012	1973
0.00	2122	2102	2067

UNIT ELECTRICAL INFORMATION

MODEL NO.	MTR FLA 240v	KW HEAT 240v	HEAT AMPS 240v	TOTAL AMPS 240v	KW HEAT 208v	HEAT AMPS 208v	TOTAL AMPS 208v	MIN AMPACITY @240v		MIN AMPACITY @208v		MAX FUSE SIZE @240v		MAX FUSE SIZE @208v	
								CKT 1	CKT 2	CKT 1	CKT 2	CKT 1	CKT 2	CKT 1	CKT 2
24...0KW	1.3	0	0	1.3	0	0	1.3	1.63	N/A	1.63	N/A	15	N/A	15	N/A
24...3KW	1.3	3	12.50	13.80	2.25	10.83	12.13	17.25	N/A	15.17	N/A	20	N/A	20	N/A
24...4KW	1.3	4	16.67	17.97	3.00	14.44	15.74	22.46	N/A	19.68	N/A	25	N/A	20	N/A
24...5KW	1.3	5	20.83	22.13	3.76	18.06	19.36	27.67	N/A	24.19	N/A	30	N/A	25	N/A
24...6KW	1.3	6	25.00	26.30	4.51	21.67	22.97	32.88	N/A	28.71	N/A	35	N/A	30	N/A
24...8KW	1.3	8	33.33	34.63	6.01	28.89	30.19	43.29	N/A	37.74	N/A	45	N/A	40	N/A
24...10KW	1.3	10	41.67	42.97	7.51	36.11	37.41	53.71	N/A	46.76	N/A	60	N/A	50	N/A
36...0KW	2.2	0	0	2.2	0	0	2.2	2.75	N/A	2.75	N/A	15	N/A	15	N/A
36...3KW	2.2	3	12.50	14.70	2.25	10.83	13.03	18.38	N/A	16.29	N/A	20	N/A	20	N/A
36...4KW	2.2	4	16.67	18.87	3.00	14.44	16.64	23.58	N/A	20.81	N/A	25	N/A	25	N/A
36...5KW	2.2	5	20.83	23.03	3.76	18.06	20.26	28.79	N/A	25.32	N/A	30	N/A	30	N/A
36...6KW	2.2	6	25.00	27.20	4.51	21.67	23.87	34.00	N/A	29.83	N/A	35	N/A	30	N/A
36...8KW	2.2	8	33.33	35.53	6.01	28.89	31.09	44.42	N/A	38.86	N/A	45	40	40	N/A
36...10KW	2.2	10	41.67	43.87	7.51	36.11	38.31	54.83	N/A	47.89	N/A	60	N/A	50	N/A
36...15KW	2.2	15	62.50	64.70	11.27	54.17	56.37	41.81	39.06	36.60	33.85	45	40	60	35
48...0KW	3.6	0	0	3.6	0	0	3.6	4.5	N/A	4.5	N/A	15	N/A	15	N/A
48...8KW	3.6	8	33.33	36.93	6.01	28.89	32.49	46.17	N/A	40.61	N/A	50	N/A	45	N/A
48...10KW	3.6	10	41.67	45.27	7.51	36.11	39.71	56.58	N/A	49.64	N/A	60	N/A	50	N/A
48...15KW	3.6	15	62.50	66.10	11.27	54.17	57.77	43.56	39.06	38.35	33.85	45	40	40	35
48...20KW	3.6	20	83.33	86.93	15.02	72.22	75.82	56.58	52.08	49.64	45.14	60	60	50	50
60...0KW	3.9	0	0	3.9	0	0	3.9	4.88	N/A	4.88	N/A	15	N/A	15	N/A
60...8KW	3.9	8	33.33	37.23	6.01	28.89	32.79	46.54	N/A	40.99	N/A	50	N/A	45	N/A
60...10KW	3.9	10	41.67	45.57	7.51	36.11	40.01	56.96	N/A	50.01	N/A	60	N/A	60	N/A
60...15KW	3.9	15	62.50	66.40	11.27	54.17	58.07	43.94	39.06	38.73	33.85	45	40	40	35
60...20KW	3.9	20	83.33	87.23	15.02	72.22	76.12	56.96	52.08	50.01	45.14	60	60	60	50

NOTE: 10, 15 and 20 KW require 2 supply circuits.

	MODEL	GPM	PD. FT.	MBTUH at EWT (70° EAT)				
				120°	140°	160°	180°	
2 ROW	24-DU	1.5	1.8	13.9	19.7	25.5	31.4	
		2.5	3.5	15.8	22.2	28.7	35.3	
		3.5	5.9	16.7	23.5	30.3	37.2	
	36-DU	2	2	19.4	27.4	35.4	43.6	
		3	3.3	21.5	30.4	39.3	48.3	
		4	5.1	22.8	32.1	41.5	50.9	
3 ROW	24-DU	2	2.1	19.0	26.8	34.6	42.6	
		3	3.6	20.8	29.3	37.9	46.6	
		4	5.6	21.9	30.8	39.8	48.8	
	36-DU	2.5	2.3	26.1	36.8	47.7	58.7	
		3.5	3.7	28.6	40.2	52.1	64.0	
		4.5	5.4	30.1	42.3	54.7	67.2	
	48-DU	3	2.6	32.9	46.4	60.1	73.9	
		4	3.9	35.7	50.3	65.1	80.0	
		5	5.5	37.6	53.0	68.5	84.1	
	60-DU	3.5	2.9	40.8	57.6	74.5	91.6	
		4.5	4.2	44.1	62.1	80.4	98.8	
		5.5	5.7	46.4	65.3	84.5	103.8	
	4 ROW	48-DU	3.5	2.6	40.6	57.2	73.9	90.8
			4.5	3.9	43.5	61.3	79.2	97.2
			5.5	5.2	45.5	64.1	82.7	101.6
60-DU		4	2.2	49.5	69.7	90.2	110.8	
		5	3	53.0	74.6	96.5	118.5	
		6	3.9	55.5	78.2	101.1	124.0	

Capacities Calculated

NOTES:

- **IMPORTANT** – When ordering DU Series units with hydronic heat, specify whether pump module is required, and if so, whether it is required factory installed or shipped separate as a kit (See List Price for details).
- Contact the factory for wiring diagrams of all unit combinations.
- Due to the continuous efforts to improve our products, all specifications subject to change without notice.