

## Replacement Parts Guide for Vertical Unit Ventilators MAUVE and MAUVF Series

Vertical Code String Summary	pages 2-3
Vertical Units - Exterior Panels	page 4
Vertical Units - Tops	page 5
Vertical Units - Heating Coils	page 6
Vertical Units - Cooling Coils & TXV	page 7
Vertical Units - Drainpans	page 8
Blower Shaft, Wheels, Bearings, & Motors	page 9
Filters & Touch Up Paint	page 11
Transformers	page 12
Electric Heat Elements	page 13
Control Components	page 14
Water valves	page 15
Freight Charge Map	page 16

Send Orders To:

(940) 397-5603 Order Fax      OR      [purchaseorders@magicaire.com](mailto:purchaseorders@magicaire.com)

Lead Time 3 Days Except Where Noted

Items Marked with "SD" Ship Same Day if Order Received by 11:00am CST.

2nd Day Air unless Ground is notated on PO.

For questions, please contact: [uvsales@magicaire.com](mailto:uvsales@magicaire.com)

SUBJECT TO STANDARD MAGIC-AIRE TERMS AND CONDITIONS

United Electric Company, 501 GALVESTON STREET, WICHITA FALLS, TEXAS 76301

DIGIT	1-4	5	6	7	8	9	10	11	12	13	14	15	16	17	18	19	20	21	22	23	24	25	26	27
CODE	MAUV	F	4	B	1	F	F	B	1	2	3	A	0	J	1	D	A	A	A	A	A	1	A	

**Digit 1-4 - Series**

MAUV

**Digit 5 - Design Version**

E - Design Designation

F - Design Designation

**Digit 6 - Size**

1 - 500 CFM

2 - 750 CFM

3 - 1000 CFM

4 - 1250 CFM

5 - 1500 CFM

**Digit 7 - Paint Color**

P - Polar Ice Front Panels - Bronze Top

B - Beige Front Panels - Bronze Top

G - Gray Front Panels - Bronze Top

W - White Front Panels - Bronze Top

1 - Polar Ice Front & Top Panels

2 - Beige Front & Top Panels

3 - Gray Front & Top Panels

4 - White Front & Top Panels

5 - Bronze Front & Top Panels

**Digit 8 - Access Panel Gauge**

1 - Standard 16 Gauge Panels

2 - Heavy Duty 14 Gauge Panels

**Digit 9 - End Panel Kits**

A - No End Panels Factory Installed

B - Solid End Panels - 16 5/8" Deep Unit

C - 2.5 x 7 Cutout End Panels - 16 5/8" Deep Unit

D - 4 x 18 Cutout End Panels - 16 5/8" Deep Unit

E - 4 x 22 Cutout End Panels - 16 5/8" Deep Unit

F - Solid End Panels - 21 7/8" Deep Unit

G - 2.5 x 7 Cutout End Panels - 21 7/8" Deep Unit

H - 4 x 18 Cutout End Panels - 21 7/8" Deep Unit

J - 4 x 22 Cutout End Panels - 21 7/8" Deep Unit

K - 5.25 x 2.5 Corner Cutout End Panels - 21 7/8" Deep Unit

**Digit 10 - Inlet Air Arrangement**

**Digit 11 - Discharge Aire Arrangement**

A - Top Barstock Grille Only

B - Top Barstock Grille W/Mesh

C - Top Discharge With No Grille

**Digit 12 - Fan Motor Selection**

1 - PSC Std Motor

2 - ECM - High Efficiency

5 - ECM - Variable Speed

**Digit 13 - Face and Bypass Damper**

1 - None - Valve Controlled Unit

2 - Face & Bypass Damper

**Digit 14 - Outdoor Air Damper**

**Digit 15 - Temperature Controls**

A - No Controls

**DDC Ready Unit**

D-Valve Cntrl-W/OA Damper Actuator  
0-10vdc

E-Valve Cntrl-W/OA Damper Actuator  
Floating Point

G-F&B-W/Damper Actuators 0-10vdc

H-F&B-W/Damper Actuators Floating

X-Customer Supplied Contorls Instal

**Factory Lon Talk Controls Installed**

J-Valve Cntrl

K-Valve Cntrl W/IAQ Input

L-Face-n-Bypass

M-Face-n-Bypass w/IAQ Input

**Factory BACNet Controls Installed**

N-Valve Cntrl

P-Valve Cntrl W/IAQ Input

R-Face-n-Bypass

S-Face-n-Bypass w/IAQ Input

**Digit 16 - Occupied/Unoccupied Opti**

0 - No Requirement

1 - Day Night Changeover

3 - Unit Mounted Time Clock

**Digit 17 - Power Supply**

J - 115V-1 Phase

K - 208V - 1 Phase

L - 230V - 1 Phase

M - 265V - 1 Phase

5 - 200V - 3 Phase

6 - 230V - 3 Phase

7 - 460V - 3 Phase

DIGIT	1-4	5	6	7	8	9	10	11	12	13	14	15	16	17	18	19	20	21	22	23	24	25	26	27
CODE	MAUV	F	4	B	1	F	F	B	1	2	3	A	0	J	1	D	A	A	A	A	A	1	A	

**Digit 18 - Coil Arrangement**

- 1 - Preheat
- 2 - Reheat

**Digit 19 - Heating Coil**

- A - None
- B - 1 Row - Left Hand
- C - 1 Row - Right Hand
- D - 2 Row - Left Hand
- E - 2 Row - Right Hand
- F - 3 Row - Left Hand
- G - 3 Row - Right Hand
- H - 4 Row - Left Hand
- J - 4 Row - Right Hand
- M - Steam 1 Row - Left Hand - Same End Connx
- N - Steam 1 Row - Right Hand - Same End Connx
- P - Steam 2 Row - Left Hand - Same End Connx
- R - Steam 2 Row - Right Hand - Same End Connx
- S - Steam 1 Row - Left Hand - Opposite End Connx
- T - Steam 1 Row - Right Hand - Opposite End Connx
- V - Steam 2 Row - Left Hand - Opposite End Connx
- W - Steam 2 Row - Right Hand - Opposite End Connx
- 2 - Electric Heat
- 3 - Electric Heat
- 4 - Electric Heat
- 5 - Electric Heat
- 6 - Electric Heat

**Digit 20 - Heating Valve & Actuator**

- A - None
- B - 3Way-2.0Cv-Proportional
- C - 3Way-2.0Cv-Floating Point
- D - 3Way-4.0Cv-Proportional
- E - 3Way-4.0Cv-Floating Point
- F - 3Way-7.5Cv-Proportional
- G - 3Way-7.5Cv-Floating Point
- H - 3Way-2Position
- J - 2Way-2.0Cv-Proportional
- K - 2Way-2.0Cv-Floating Point
- L - 2Way-4.0Cv-Proportional
- M - 2Way-4.0Cv-Floating Point
- N - 2Way-7.5Cv-Proportional
- O - 2Way-7.5Cv-Floating Point
- P - 2Way-2Position
- 1 - Steam-2Way-2.5Cv-Proportional
- 2 - Steam-2Way-2.5Cv-Floating Point
- 3 - Steam-2Way-4.0Cv-Proportional
- 4 - Steam-2Way-4.0Cv-Floating Point
- 5 - Steam-2Way-6.3Cv-Proportional
- 6 - Steam-2Way-6.3Cv-Floating Point

**Digit 21 - Heating Valve Package**

- A - Not Supplied
- B Thru X - Factory Supplied

**Digit 22 - Cooling Coil**

- A - None
- F - 3Row - Left Hand
- G - 3Row - Right Hand
- H - 4Row - Left Hand
- J - 4Row - Right Hand
- K - 5Row - Left Hand
- L - 5Row - Right Hand
- 8 - 5Row High Cap - Left Hand
- 9 - 5Row High Cap - Right Hand
- Y - R22 DX - Left Hand
- Z - R22 DX - Right Hand
- 2 - R410A - Left Hand
- 3 - R410A - Right Hand

**Digit 23 - Cooling Valve & Actuator**

- A - None
- B - 3Way-2.0Cv-Proportional
- C - 3Way-2.0Cv-Floating Point
- D - 3Way-4.0Cv-Proportional
- E - 3Way-4.0Cv-Floating Point
- F - 3Way-7.5Cv-Proportional
- G - 3Way-7.5Cv-Floating Point
- H - 3Way-2Position
- J - 2Way-2.0Cv-Proportional
- K - 2Way-2.0Cv-Floating Point
- L - 2Way-4.0Cv-Proportional
- M - 2Way-4.0Cv-Floating Point
- N - 2Way-7.5Cv-Proportional
- O - 2Way-7.5Cv-Floating Point
- P - 2Way-2Position

**Digit 24 - Cooling Coil Valve Package**

- A - Not Supplied
- B Thru X - Factory Supplied

**Digit 25 - Drainpan**

- A - Galvanized
- B - Stainless Steel

**Digit 26 - Air Filter**

- 1 - 1" Disposable
- 2 - 1" Renewable
- 3 - 1" Permanent
- 4 - 2" Pleated

**Digit 27 - Warranty**

**MAUVE & MAUVF VERTICAL UNITS - PANELS**

**Code String Digit Options**

Part Number	Description	Digit 6	Digit 8	SHIP	PAGE #	ITEM #
073-101641-00X	UV500 FRONT CENTER PANEL 16ga	1	1		5	14
073-102641-00X	UV750 FRONT CENTER PANEL 16ga	2	1			14
073-103641-00X	UV1000 FRONT CENTER PANEL 16ga	3	1			14
073-104641-00X	UV1250 FRONT CENTER PANEL 16ga	4	1			14
073-105641-00X	UV1500 FRONT CENTER PANEL 16ga	5	1			14
073-100090-00X	FRONT SIDE PANEL 16ga	ALL	1			15
073-101640-00X	UV500 FRONT CENTER PANEL 14ga	1	2			14
073-102640-00X	UV750 FRONT CENTER PANEL 14ga	2	2			14
073-103640-00X	UV1000 FRONT CENTER PANEL 14ga	3	2			14
073-104640-00X	UV1250 FRONT CENTER PANEL 14ga	4	2			14
073-105640-00X	UV1500 FRONT CENTER PANEL 14ga	5	2			14
073-100070-00X	FRONT SIDE PANEL 14ga	ALL	2			15
RUV0190X	FASTENER KIT - FRONT PANEL (Note 1)	ALL	ALL	SD		17

Note1 : Fastener kits includes bushing, bolt, & clip for mounting panels  
 Requires 1 kit for each front side panel and 2 for each center front panels

Part Number	Description	Digit 9	SHIP	PAGE #	ITEM #
073-100050-00X	16 5/8" END PANEL - SINGLE	B		5	1
073-100051-00X	21 7/8" END PANEL - SINGLE	F			2
173-100006-00X	16 5/8" END PANEL KIT	B			
173-100285-01X	16 5/8" END PANEL KIT W/2.5" X 7" CUTOUTS	C			
173-100285-02X	16 5/8" END PANEL KIT W/4" X 18" CUTOUTS	D			
173-100285-03X	16 5/8" END PANEL KIT W/4" X 22" CUTOUTS	E			
173-100006-01X	21 7/8" END PANEL KIT	F			
173-100285-05X	21 7/8" END PANEL KIT W/2.5" X 7" CUTOUTS	G			
173-100285-06X	21 7/8" END PANEL KIT W/4" X 18" CUTOUTS	H			
173-100285-07X	21 7/8" END PANEL KIT W/4" X 22" CUTOUTS	J			
173-100285-08X	21 7/8" END PANEL KIT W/5.25 X 2.5" Corner Cut	K			
373-100087-002	21-7/8 END PANEL FASTENER KIT	ALL	SD		18
373-100087-003	16-5.8 END PANEL FASTENER KIT	ALL	SD	5	16

Note 3: End Panel Kits include fastener kit and 2 Panels  
 Note 4: End Panel fasterner kit includes clip, hardware, side kick plate. Requires 1 kit for each end panel

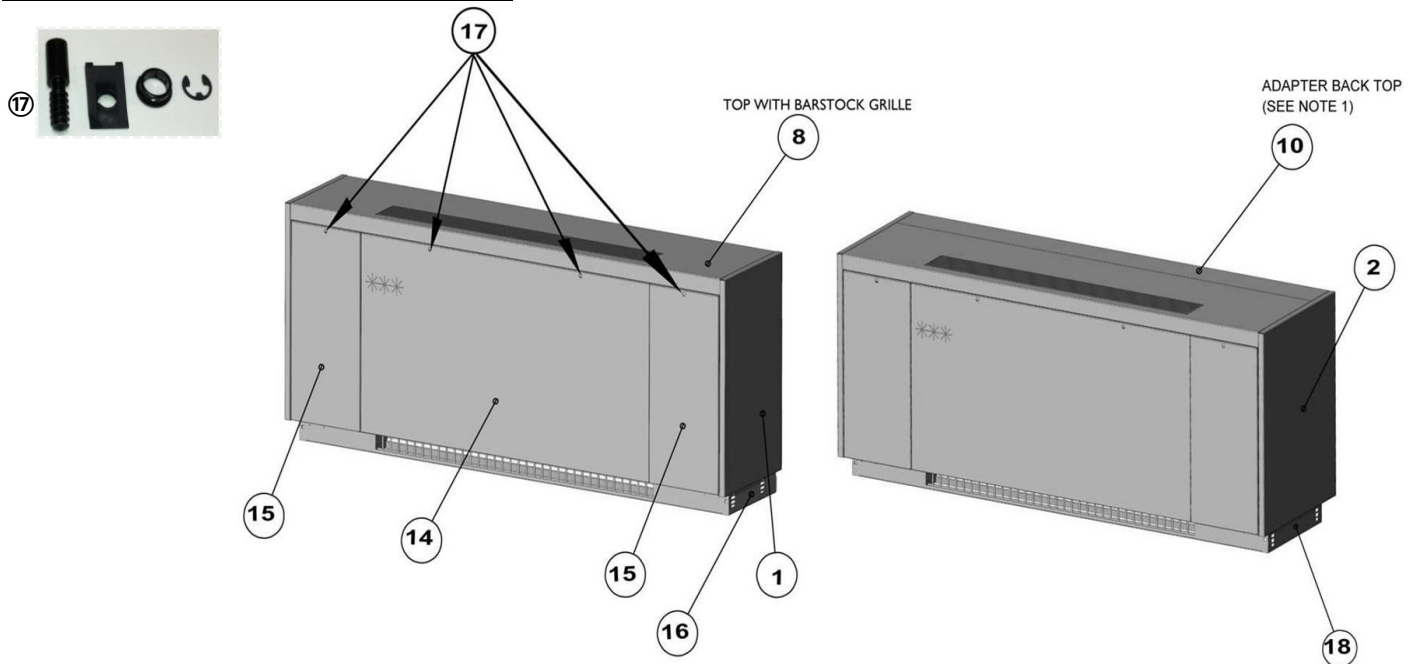
Replace X with the following:

Replace X	Code String Digit 7	Color
1	B or 2	Beige
2	P or 1	Polar Ice
3	Z or 5	Bronze
4	W or 4	White
6	G or 3	Gray

MAUVE & MAUVF VERTICAL UNITS - TOPS AND GRILLES							
Part Number	Description	Digit 6	Digit 11	List Price	SHIP	PAGE#	ITEM #
173-100588-11X	UV500 TOP AND GRILLE ASSEMBLY	1	A			5	6
173-100588-01X	UV500 TOP AND GRILLE W/MESH	1	B				
TBA	UV500 TOP FOR NO GRILLE UNIT	1	C				
173-100588-12X	UV750 TOP AND GRILLE ASSEMBLY	2	A				
173-100588-02X	UV750 TOP AND GRILLE W/MESH	2	B				
TBA	UV750 TOP FOR NO GRILLE UNIT	2	C				
173-100588-13X	UV1000 TOP AND GRILLE ASSEMBLY	3	A				
173-100588-03X	UV1000 TOP AND GRILLE W/MESH	3	B				
TBA	UV1000 TOP FOR NO GRILLE UNIT	3	C				
173-100588-14X	UV1250 TOP AND GRILLE ASSEMBLY	4	A				
173-100588-04X	UV1250 TOP AND GRILLE W/MESH	4	B				
TBA	UV1250 TOP FOR NO GRILLE UNIT	4	C				
173-100588-15X	UV1500 TOP AND GRILLE ASSEMBLY	5	A				
173-100588-05X	UV1500 TOP AND GRILLE W/MESH	5	B				
TBA	UV1500 TOP FOR NO GRILLE UNIT	5	C				
373-280009-01X	UV500 FALSE BACK TOP	1	E,F,H,I,P,R,T,U			5	10
373-280009-02X	UV750 FALSE BACK TOP	2	E,F,H,I,P,R,T,U				10
373-280009-03X	UV 1000 FALSE BACK TOP	3	E,F,H,I,P,R,T,U				10
373-280009-04X	UV1250 FALSE BACK TOP	4	E,F,H,I,P,R,T,U				10
373-280009-05X	UV1500 FALSE BACK TOP	5	E,F,H,I,P,R,T,U				10

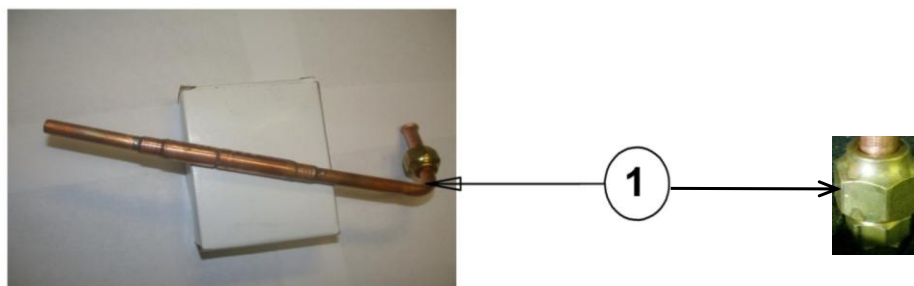
Replace X	Code String Digit 7	Color
1	2	Beige
2	1	Polar Ice
3	5,P,B,G, or W	Bronze

Replace X	Code String Digit 7	Color
4	4	White
6	3	Gray

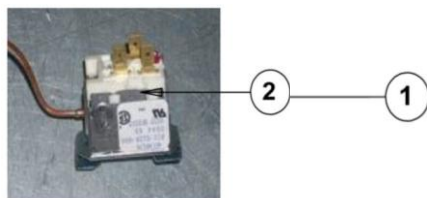


MAUVE & MAUVF COILS - HEATING							
Part Number	Description	Digit 6	Digit 19	List Price	SHIP	PAGE #	ITEM #
373-230031-001RP	UV500 1 ROW HW COIL	1	B or C				
373-230031-002RP	UV/UH750 1 ROW HW COIL	2	B or C				
373-230031-003RP	UV/UH1000 1 ROW HW COIL	3	B or C				
373-230031-004RP	UV/UH1250 1 ROW HW COIL	4	B or C				
373-230031-005RP	UV/UH1500 1 ROW HW COIL	5	B or C				
373-230030-001RP	UV500 2 ROW HW COIL	1	D or E				
373-230030-002RP	UV/UH750 2 ROW HW COIL	2	D or E				
373-230030-003RP	UV/UH1000 2 ROW HW COIL	3	D or E				
373-230030-004RP	UV/UH1250 2 ROW HW COIL	4	D or E				
373-230030-005RP	UV/UH1500 2 ROW HW COIL	5	D or E				
373-230019-001RP	UV500 3 ROW HW COIL	1	F or G				
373-230019-002RP	UV/UH750 3 ROW HW COIL	2	F or G				
373-230019-003RP	UV/UH1000 3 ROW HW COIL	3	F or G				
373-230021-001RP	UV/UH1250 3 ROW HW COIL	4	F or G				
373-230023-001RP	UV/UH1500 3 ROW HW COIL	5	F or G				
373-230028-001RP	UV500 4 ROW HW COIL	1	H or J				
373-230028-002RP	UV/UH750 4 ROW HW COIL	2	H or J				
373-230028-003RP	UV/UH1000 4 ROW HW COIL	3	H or J				
373-230027-001RP	UV/UH1250 4 ROW HW COIL	4	H or J				
373-230026-001RP	UV/UH1500 4 ROW HW COIL	5	H or J				
102000	UV500 1 ROW LOW CAP STEAM	1	M or N		6 Weeks		
102001	UV/UH750 1 ROW LOW STEAM	2	M or N		6 Weeks		
102002	UV/UH1000 1 ROW LOW STEAM	3	M or N		6 Weeks		
102003	UV/UH1250 1 ROW LOW STEAM	4	M or N		6 Weeks		
102004	UV/UH1500 1 ROW LOW STEAM	5	M or N		6 Weeks		
102005	UV500 2 ROW HIGH CAP STEAM	1	P or R		6 Weeks		
102006	UV/UH750 2 ROW HIGH CAP STEAM	2	P or R		6 Weeks		
102007	UV/UH1000 2 ROW HIGH CAP STEAM	3	P or R		6 Weeks		
102008	UV/UH1250 2 ROW HIGH CAP STEAM	4	P or R		6 Weeks		
102009	UV/UH1500 2 ROW HIGH CAP STEAM	5	P or R		6 Weeks		
102000-OPP	UV500 1 ROW LOW CAP. OPP END CONX	1	S or T		6 Weeks		
102001-OPP	UV/UH750 1 ROW LOW CAP. OPP END CONX	2	S or T		6 Weeks		
102002-OPP	UV/UH1000 1 ROW LOW CAP. OPP END CONX	3	S or T		6 Weeks		
102003-OPP	UV/UH1250 1 ROW LOW CAP. OPP END CONX	4	S or T		6 Weeks		
102004-OPP	UV/UH1500 1 ROW LOW CAP. OPP END CONX	5	S or T		6 Weeks		
102005-OPP	UV500 2 ROW HIGH CAP. OPP END CONNX	1	V or W		6 Weeks		
102006-OPP	UV/UH750 2 ROW HIGH CAP. OPP END CONNX	2	V or W		6 Weeks		
102007-OPP	UV/UH1000 2 ROW HIGH CAP. OPP END CONNX	3	V or W		6 Weeks		
102008-OPP	UV/UH1250 2 ROW HIGH CAP. OPP END CONNX	4	V or W		6 Weeks		
102009-OPP	UV/UH1500 2 ROW HIGH CAP. OPP END CONNX	5	V or W		6 Weeks		
UV0146	Water Coil Low Limit Stat - 38 Degf/42 Degf	All	B thru W		SD	7	1
594725	VACUUM BREAKER ASSY (Note 1)	ALL	M thru W			6	1

Note 1: Vacuum breaker assy required, one each per steam coil. Mechanically connects to coil manifold with 1/4" MPT x 1/2" factory provided adapter



MAUVE & MAUVF COILS - COOLING							
Part Number	Description	Digit 6	Digit 22	List Price	SHIP	PAGE #	ITEM #
373-230019-001RP	UV500 3 ROW CW COIL	1	F or G				
373-230019-002RP	UV/UH750 3 ROW CW COIL	2	F or G				
373-230019-003RP	UV/UH1000 3 ROW CW COIL	3	F or G				
373-230021-001RP	UV/UH1250 3 ROW CW COIL	4	F or G				
373-230023-001RP	UV/UH1500 3 ROW CW COIL	5	F or G				
373-230028-001RP	UV500 4 ROW CW COIL	1	H or J				
373-230028-002RP	UV/UH750 4 ROW CW COIL	2	H or J				
373-230028-003RP	UV/UH1000 4 ROW CW COIL	3	H or J				
373-230027-001RP	UV/UH1250 4 ROW CW COIL	4	H or J				
373-230026-001RP	UV/UH1500 4 ROW CW COIL	5	H or J				
373-230025-001RP	UV500 5 ROW CW COIL	1	K or L				
373-230025-002RP	UV/UH750 5 ROW CW COIL	2	K or L				
373-230025-003RP	UV/UH1000 5 ROW CW COIL	3	K or L				
373-230024-002RP	UV/UH1250 5 ROW CW COIL	4	K or L				
373-230024-001RP	UV/UH1500 5 ROW CW COIL	5	K or L				
373-230039-001RP	UV500 HI CAP 5 ROW CW COIL	1	8 or 9				
373-230039-002RP	UV/UH750 HI CAP 5 ROW CW COIL	2	8 or 9				
373-230039-003RP	UV/UH1000 HI CAP 5 ROW CW COIL	3	8 or 9				
373-230038-001RP	UV/UH1250 HI CAP 5 ROW CW COIL	4	8 or 9				
373-230038-002RP	UV/UH1500 HI CAP 5 ROW CW COIL	5	8 or 9				
UV0146	Water Coil Low Limit Stat - 38 Degf/42 Degf	All	F,G,H,J,K,L,8,9		SD	7	1
373-240036-001	DX (R22) - Left Hand Connex UV	1	Y				
373-240036-002	DX (R22) - Left Hand Connex UV	2	Y				
373-240036-003	DX (R22) - Left Hand Connex UV	3	Y				
373-240037-001	DX (R22) - Left Hand Connex UV	4	Y				
373-240037-002	DX (R22) - Left Hand Connex UV	5	Y				
373-240036-011	DX (R22) - Right Left Hand Connex UV	1	Z				
373-240036-012	DX (R22) - Right Left Hand Connex UV	2	Z				
373-240036-013	DX (R22) - Right Left Hand Connex UV	3	Z				
373-240037-011	DX (R22) - Right Left Hand Connex UV	4	Z				
373-240037-012	DX (R22) - Right Left Hand Connex UV	5	Z				
373-240034-001	DX (R410A) - Left Hand Connex UV	1	2				
373-240034-002	DX (R410A) - Left Hand Connex UV	2	2				
373-240034-003	DX (R410A) - Left Hand Connex UV	3	2				
373-240026-002	DX (R410A) - Left Hand Connex UV	4	2				
373-240026-001	DX (R410A) - Left Hand Connex UV	5	2				
373-240034-011	DX (R410A) - Right Hand Connex UV	1	3				
373-240034-012	DX (R410A) - Right Hand Connex UV	2	3				
373-240034-013	DX (R410A) - Right Hand Connex UV	3	3				
373-240026-012	DX (R410A) - Right Hand Connex UV	4	3				
373-240026-011	DX (R410A) - Right Hand Connex UV	5	3				
RP100831	UV500/750 R22 EXPANSION VALVE	1 or 2	Y or Z		SD		
RP100832	UV1000/1250 R22 EXPANSION VALVE	3 or 4	Y or Z		SD		
RP100833	UV/UH1500 R22 EXPANSION VALVE	5 or 6	Y or Z		SD		
010-070004-000	UV 500 R410A EXPANSION VALVE	1	2 or 3		SD		
010-070005-000	UV750/1000 R410A EXPANSION VALVE	2 or 3	2 or 3		SD		
010-070006-000	UV/UH1250 R410A EXPANSION VALVE	4	2 or 3		SD		
010-070007-000	UV/UH1500 R410A EXPANSION VALVE	5 or 6	2 or 3		SD		
702025	DX LOW LIMIT STAT - 28 DEG f	ALL	Y,Z,2 or 3		SD	7	2



**MAUVE & MAUVF DRAINPANS**

Part Number	Description	Digit 6	Digit 25	List Price	SHIP	PAGE #	ITEM #
073-101151-001	UV500 GALV. DRAINPAN	1	A				
073-102151-001	UV750 GALV. DRAINPAN	2	A				
073-103151-001	UV1000 GALV. DRAINPAN	3	A				
073-104151-001	UV1250 GALV. DRAINPAN	4	A				
073-105151-001	UV1500 GALV. DRAINPAN	5	A				
073-101496-001	UV500 Stainless Steel Drainpan	1	B				
073-102496-001	UV750 Stainless Steel Drainpan	2	B				
073-103496-001	UV1000 Stainless Steel Drainpan	3	B				
073-104496-001	UV1250 Stainless Steel Drainpan	4	B				
073-105496-001	UV1500 Stainless Steel Drainpan	5	B				

**MAUVE & MAUVF - BLOWER SHAFTS, WHEELS, BEARINGS**

Part Number	Description	Digit 6		List Price	SHIP	PAGE #	ITEM #
UV0560	UV500 BLOWER SHAFT REV E & F	1				10	1
UV0561	UV/UH750 BLOWER SHAFT REV E & F	2					1
UV0562	UV/UH1000 BLOWER SHAFT REV E & F	3					1
UV0567	UV/UH1250 BLOWER SHAFT REV E & F	4					1
UV0204	UV/UH1500 BLOWER SHAFT REV E & F	5					1
UV0204	UH2000 BLOWER SHAFT REV E & F	6					1
UV0196	COUPLING - MOTOR to SHAFT	ALL			SD	10	7
011-112002-001	BLOWER WHEEL	2,3,4,5			SD	10	14
594513	SLEEVE BEARING BRACKET	1,2,3,4				10	8
UV0188	SLEEVE BEARING - End of Shaft	1,2,3,4			SD	10	11
103099	Ball Bearing - Middle	5			SD	10	21

**MAUVE & MAUVF - MOTORS**

Part Number	Description	Digit 6	Digit 12	List Price	SHIP	PAGE #	ITEM #
110-110000-001	PSC MOTOR 1/5 HP (Note 3)	ALL	1		SD	9	1

\*\*\*Include unit Serial Number and motor program when ordering ECM Motors\*\*\*

Part Number	Description	Digit 6	Digit 12	List Price	SHIP	PAGE #	ITEM #
-------------	-------------	---------	----------	------------	------	--------	--------

Digit 17 = J,K,L,5,6,7

UV0177	ECM MOTOR 1/3 HP 120V/240V/480V (Notes 1,2, 4)	1,2 or 3	2 or 5		SD	9	20
UV0178	ECM MOTOR 1/2 HP 120V/240V/480V (Notes 1,2, 4)	4 or 5	2 or 5		SD	9	20

Digit 17 = M

UV0182	ECM MOTOR 1/3 HP 277V (Notes 1,2, 4)	1,2 or 3	2 or 5		SD	9	20
UV0183	ECM MOTOR 1/2 HP 277V (Notes 1,2, 4)	4 or 5	2 or 5		SD	9	20

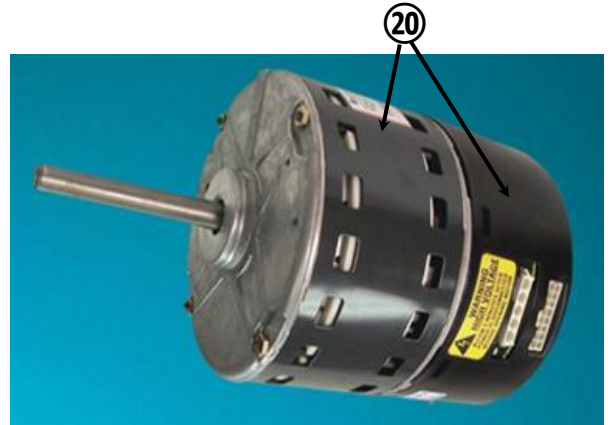
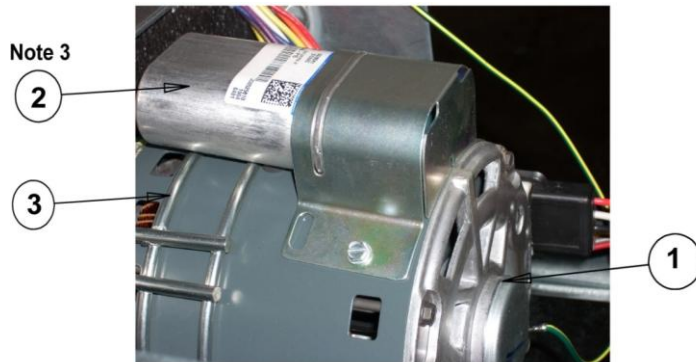
173-280026-001	ECM MOTOR SHROUD KIT 1/3HP	1,2 or 3	2 or 5			10	4
173-280026-002	ECM MOTOR SHROUD KIT 1/2HP	4 or 5	2 or 5				4
112038	MOTOR MOUNTING RING	ALL	1 or 2 or 5		SD	9	3

Note1: ECM motor requires shroud to be in place to avoid overheating and premature failure. See # 4 on page 10.

Note2: ECM motor requires factory programming. Provide unit serial number and program name from sticker on cap end of motor. See # 16 on page 10.

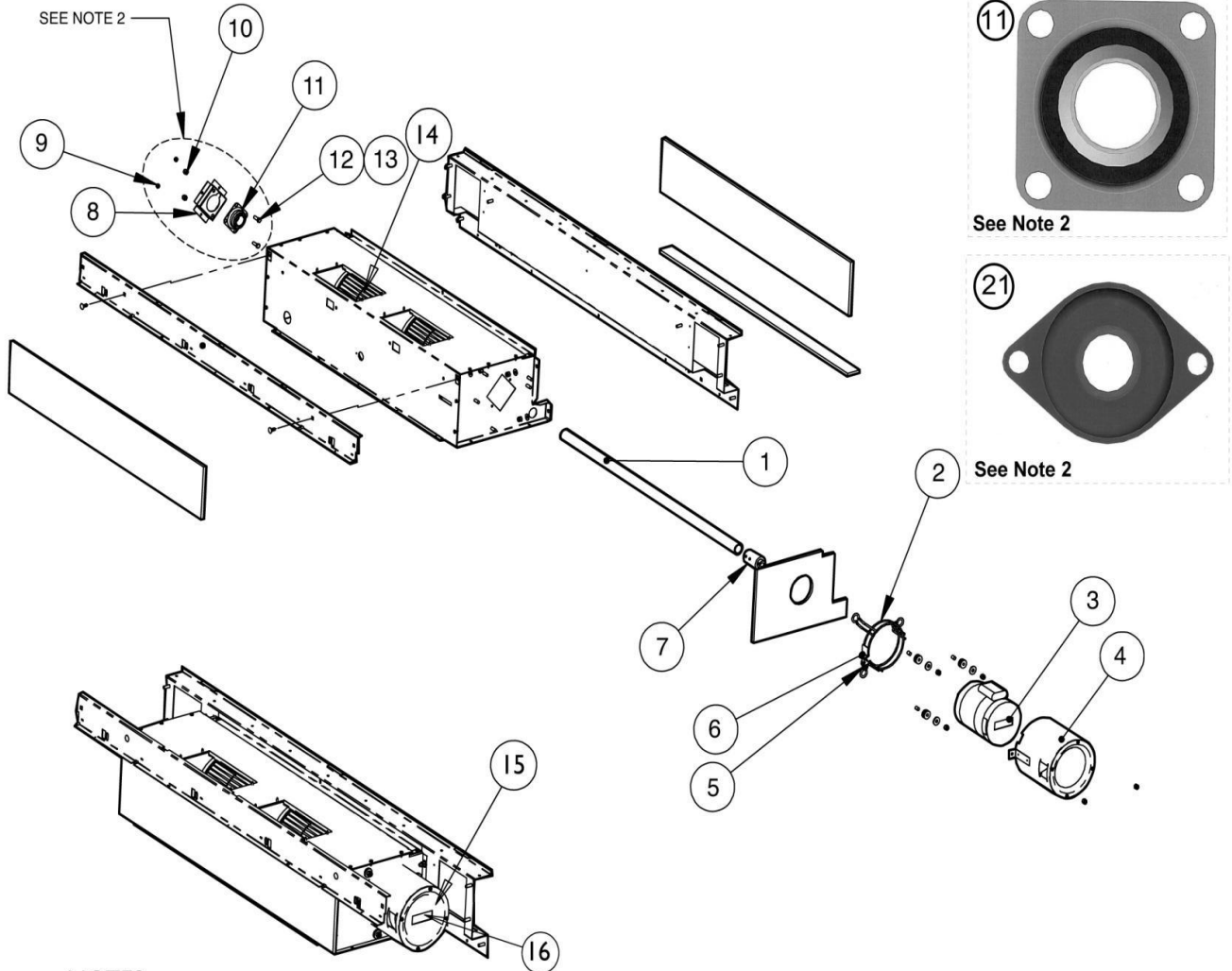
Note3: PSC Motor and Capacitor sold as one assembly. Not sold separately. See #2 on page 9.

Note 4: ECM Motor and integrated control module sold as one assembly. Not sold separately. See #20 on page 9.



*Magic Aire*®

## UNIT VENTILATORS HORIZONTAL & VERTICAL



### NOTES:

1. Not all components shown for clarity.
2. Items no. 8, 11 and associated hardware not required for UV/UH 1500. This unit will have a center bearing assembly. See Item #21.
3. Install motor with capacitor facing up. Note that Motor shroud (item 4) is not required for PSC motors.
4. Install sleeve bearing with oil cup facing up and towards the rear of the assembly.

**MAUVE & MAUVF - FILTERS & TOUCH UP PAINT**

Part Number	Description	Digit 6	Digit 26	List Price	SHIP	Notes
<b>Throwaway Filters</b>						
UV0335	UV500 THROWAWAY FILTER	1	1			1
UV0165	UV750 THROWAWAY FILTER	2	1			1
UV0206	UV1000 THROWAWAY FILTER	3	1			1
UV0207	UV1250 THROWAWAY FILTER	4	1			1
UV0208	UV1500 THROWAWAY FILTER	5	1			1

Note 1: UV Throwaway filter sizes changed on 8/29/2011. If unit was manufactured after this date, refer to new part numbers below.

010-090021-000	UV500 THROWAWAY FILTER - NEW	1	1		SD	1
010-090022-000	UV750 THROWAWAY FILTER - NEW	2	1		SD	1
010-090023-000	UV1000 THROWAWAY FILTER - NEW	3	1		SD	1
010-090024-000	UV1250 THROWAWAY FILTER - NEW	4	1		SD	1
010-090025-000	UV1500 THROWAWAY FILTER - NEW	5	1		SD	1

**Renewable Filters**

373-600002-001	UV500 RENEWABLE FILTER	1	2			2
373-600002-002	UV750 RENEWABLE FILTER	2	2			2
373-600002-003	UV1000 RENEWABLE FILTER	3	2			2
373-600002-004	UV1250 RENEWABLE FILTER	4	2			2
373-600002-005	UV1500 RENEWABLE FILTER	5	2			2

Note 2: UV Renewable filter sizes changed on 8/29/2011. If unit was manufactured after this date, refer to new part numbers below.

376-000014-001	UV500 RENEWABLE FILTER - NEW	1	2			2
376-000014-002	UV750 RENEWABLE FILTER - NEW	2	2			2
376-000014-003	UV1000 RENEWABLE FILTER - NEW	3	2			2
376-000014-004	UV1250 RENEWABLE FILTER - NEW	4	2			2
376-000014-005	UV1500 RENEWABLE FILTER - NEW	5	2			2

**Permanent Filters**

UV0297	UV500 PERMANENT FILTER	1	3			3
UV0298	UV750 PERMANENT FILTER	2	3			3
UV0299	UV1000 PERMANENT FILTER	3	3			3
UV0293	UV1250 PERMANENT FILTER	4	3			3
UV0295	UV1500 PERMANENT FILTER	5	3			3

Note 3: UV Permanent filter sizes changed on 9/22/2011. If unit was manufactured after this date, refer to new part numbers below.

010-090036-000	UV500 PERMANENT FILTER - NEW	1	3			3
010-090037-000	UV750 PERMANENT FILTER - NEW	2	3			3
010-090038-000	UV1000 PERMANENT FILTER - NEW	3	3			3
010-090039-000	UV1250 PERMANENT FILTER - NEW	4	3			3
010-090040-000	UV1500 PERMANENT FILTER - NEW	5	3			3

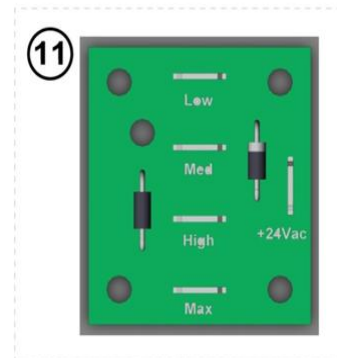
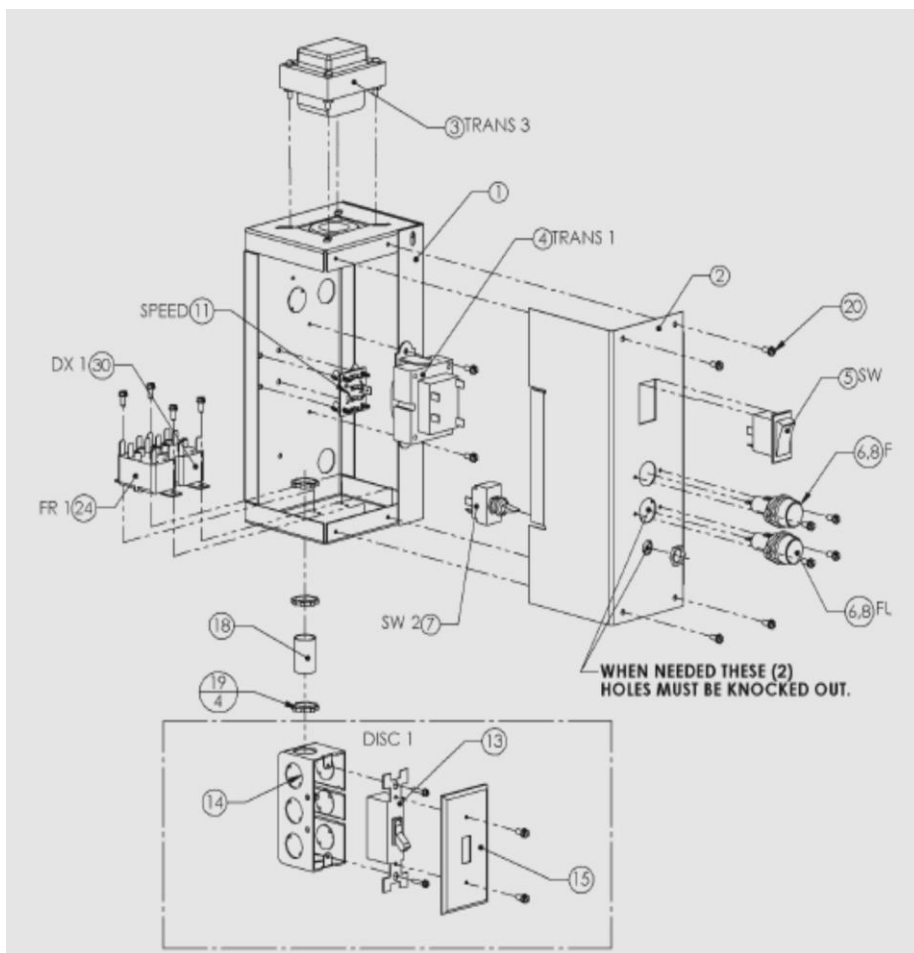
**2" Pleated**

UV0601	UV500 2" Pleated Filter	1	4			
UV0602	UV750 2" Pleated Filter	2	4			
UV0603	UV1000 2" Pleated Filter	3	4			
UV0604	UV1250 2" Pleated Filter	4	4			
UV0605	UV1500 2" Pleated Filter	5	4			

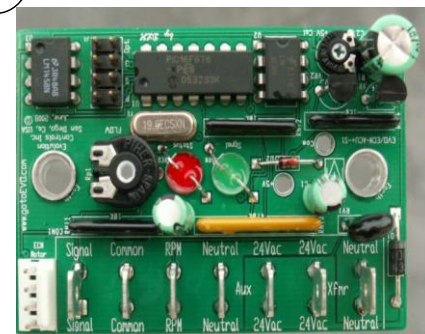
708316	12oz SPRAY CAN TOUCH UP POLAR ICE (Note 1)				SD	
708310	12oz SPRAY CAN TOUCH UP BEIGE (Note 1)				SD	
708321	12oz SPRAY CAN TOUCH UP GRAY (Note 1)				SD	
708311	12oz SPRAY CAN TOUCH UP BRONZE (Note 1)				SD	
708322	12oz SPRAY CAN TOUCH UP WHITE (Note 1)				SD	

Note 1: Paint can only ship by ground.

MAUVE & MAUVF TRANSFORMERS								
Part Number	Description	Digit 12	Digit 17	List Price	SHIP	PAGE #	ITEM #	
<b>PSC MOTOR TRANSFORMER</b>								
UV0998	1/5 HP 120V	1	J		SD	12	3	
UV0997	1/5 HP 208/230/277V	1	K,L,M,5,6,7		SD		3	
<b>STEP DOWN MOTOR TRANSFORMER</b>								
UV0238	480V-120V MOTOR		7		SD	12		
<b>CONTROL TRANSFORMER - Will be dependent on controls installed. Refer to label on transformer for replacement</b>								
106543	120v - 24v 75va					12	4	
HT01BD203	208/230v - 24v 75va						4	
106544	277v - 24v 75va						4	
112003	120v - 24v 40va						4	
112158	208/230v - 24v 40va						4	
106986	277v - 24v 40va						4	
UV0377	480/277/208v - 24v 75va						4	
<b>CONTROL BOX COMPONENT</b>								
UV0114	Blower Rocker Switch ON-OFF				SD	12	5	
106777	Blower Toggle Switch HIGH-MED-LOW				SD	12	7	
010-170042-000	Control Board for Variable Speed	Digit 12 = 5			SD	12	40	
UV0133	ECM Speed Select Board	Digit 12 = 2			SD	12	11	



40



ELECTRIC HEAT COMPONENTS							
Part Number	Description	Digit 6	Digit 17	List Price	SHIP	PAGE #	ITEM #
117010	UV500 1.4 KW 208 VAC HEAT STRIP	1	K or 5		4 Weeks		
117009	1.4 KW 240 VAC HEAT STRIP	1	L or 6		4 Weeks		
117043	1.4 KW 277 VAC HEAT STRIP	1	M		4 Weeks		
117044	1.4 KW 480 VAC HEAT STRIP	1	7		4 Weeks		
117046	UV/UH750 2.0 KW 208 VAC HEAT STRIP	2	K or 5		4 Weeks		
117023	2.0 KW 240 VAC HEAT STRIP	2	L or 6		4 Weeks		
117047	2.0 KW 277 VAC HEAT STRIP	2	M		4 Weeks		
117048	2.0 KW 480 VAC HEAT STRIP	2	7		4 Weeks		
117032	UV/UH1000 2.6 KW 208 VAC HEAT STRIP	3	K or 5		4 Weeks		
117024	2.6 KW 240 VAC HEAT STRIP	3	L or 6		4 Weeks		
117050	2.6 KW 277 VAC HEAT STRIP	3	M		4 Weeks		
117051	2.6 KW 480 VAC HEAT STRIP	3	7		4 Weeks		
117025	UV/UH1250 3.3 KW 208 VAC HEAT STRIP	4	K or 5		4 Weeks		
117022	3.3 KW 240 VAC HEAT STRIP	4	L or 6		4 Weeks		
117053	3.3 KW 277 VAC HEAT STRIP	4	M		4 Weeks		
117054	3.3 KW 480 VAC HEAT STRIP	4	7		4 Weeks		
117056	UV/UH1500 4.0 KW 208 VAC HEAT STRIP	5 or 6	K or 5		4 Weeks		
117026	4.0 KW 240 VAC HEAT STRIP	5 or 6	L or 6		4 Weeks		
117057	4.0 KW 277 VAC HEAT STRIP	5 or 6	M		4 Weeks		
117058	4.0 KW 480 VAC HEAT STRIP	5 or 6	7		4 Weeks		
010-170005-000	MANUAL HIGH LIMIT T-STAT 48"	1 or 2					
010-170005-001	MANUAL HIGH LIMIT T-STAT 72"	3,4,5, or 6					
010-170004-000	AUTO HIGH LIMIT T-STAT 48"	1 or 2					
010-170004-001	AUTO HIGH LIMIT T-STAT 72"	3,4,5, or 6					
010-174015-000	HIGH TEMP CABLE TIE FOR STAT	ALL					
112325	BROWNOUT PROTECTOR	ALL					
010-171000-000	ELECTRIC HEAT RELAY - DPST - NO	ALL				13	1
010-171001-000	ELECTRIC HEAT RELAY - 3PST - NO	ALL				13	2
HY12FU030	FUSE HOLDER					12	6,8
112381	FUSE 3.5 AMP						
112384	FUSE 4.0 AMP						
HY10QR050	FUSE 5.0 AMP						
106188	FUSE 6.0 AMP						
112374	FUSE 10 AMP						
112377	FUSE 15 AMP						
106992	FUSE BLOCK - ELECTRIC HEAT						
112378	FUSE 20 AMP						
106990	FUSE 35 AMP						
106652	FUSE 30 AMP						
106653	FUSE 40 AMP						
106657	FUSE 45 AMP						
106654	FUSE 50 AMP						
106655	FUSE 60 AMP						

Note: Heat strips above are quantities of one. Digit 19 determines how many strips are in each unit.

Note: Cable ties required for Rev E & F units for high limit stats. Qty as follows:

UV-500 QTY=2 UV/UH-750 QTY=4 UV/UH-1000 QTY=6 UV/UH-1250 QTY=8 UV/UH-1500/2000 QTY=10

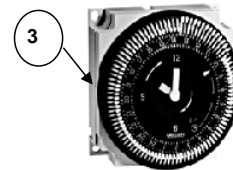


**CONTROLS**

Part Number	Description		List Price	SHIP	PAGE #	ITEM #
UV0391	Control Board (See Note 1)	Digit 15 = J, K, L, M		SD	Page 14	1
010-075007-000	Control Board (See Note 1)	Digit 15 = N, P, R, S		SD		1
UV0395	MN-S4 STAT					2
UV0401	Return Air Sensor					6
UV0401	Outdoor Air Sensor					6
UV0401	Discharge Air Temp Sensor					6
112000	Day/Night Changeover Relay	Digit 16 = 1				5
UV0400	Unit Mounted Time Clock	Digit 16 = 3				3
103458	F/B Damper Actuator - Proportional	Digit 15 = G				6
103456	F/B Damper Actuator - Proportional	Digit 15 = L thru S				6
010-130018-000	F/B Damper Actuator - Floating Point	H				6
103457	O/A Damper Actuator - Proportional	Digit 15 = D,G				7
103455	O/A Damper Actuator - Proportional	Digit 15 = J thru P				7
HF23BJ022	O/A Damper Actuator - Floating Point	Digit 15 = E,H				7
117075	7/8 OD Changeover (Aqua) Sensor	See Note 2				

Note 1: Controller must be factory programmed. Provide unit model no., serial no., and program name form controller label.

Note 2: Changeover sensor must be clamped onto the pipe supplying water to the unit upstream of the valve. See unit IOM.



2

1

4

3

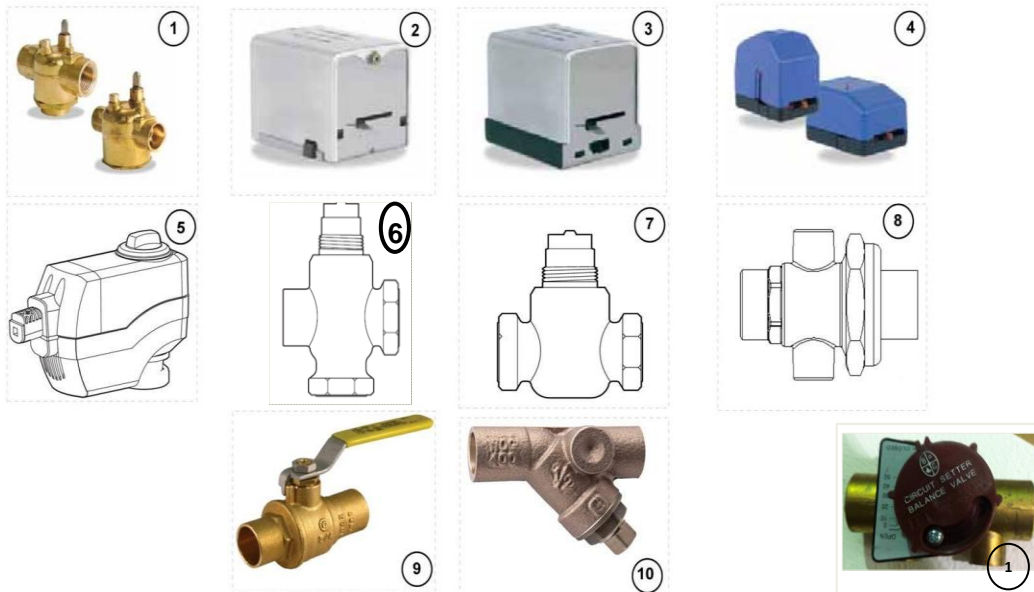
5

6

7

6

WATER VALVES & ACTUATORS								
Part Number	Description	Fits Series	List Price	SHIP	PAGE #	ITEM #		
100896	2-WAY ERIE VALVE VT2313	ALL			15	1		
100899	2-WAY ERIE VALVE VM2313	ALL			15	1		
100898	2-WAY ERIE VALVE VM2312	ALL			15	1		
100894	2-WAY ERIE VALVE VM2517	ALL			15	1		
100897	3-WAY ERIE VALVE VT3315	ALL			15	1		
100907	3-WAY ERIE VALVE VM3313	ALL			15	1		
100903	3-WAY ERIE VALVE VM3312	ALL			15	1		
100895	3-WAY ERIE VALVE VM3517	ALL			15	1		
011-999999-001	3-WAY ERIE VALVE VM2323	ALL			15	1		
100909	VALVE ACTUATORS - ERIE AH23A020	ALL			15	2		
100916	VALVE ACTUATORS - ERIE AH13A020	ALL			15	2		
100919	VALVE ACTUATORS - ERIE AG24A020	ALL			15	2		
100920	VALVE ACTUATORS - ERIE AG13A020	ALL			15	2		
100922	VALVE ACTUATORS - ERIE AT13A000	ALL			15	3		
100922	VALVE ACTUATORS - ERIE AT13A00T	ALL			15	3		
100923	VALVE ACTUATORS - ERIE AP13A000	ALL			15	3		
100924	VALVE ACTUATORS - ERIE AP23A000	ALL			15	3		
100925	2-WAY SIEMENS VALVE 599-01123	ALL			15	7		
100929	2-WAY SIEMENS VALVE 599-01108	ALL			15	7		
100926	2-WAY SIEMENS VALVE 599-01126	ALL			15	7		
100930	2-WAY SIEMENS VALVE 599-01110	ALL			15	7		
100931	2-WAY SIEMENS VALVE 599-01129	ALL			15	7		
100927	3-WAY SIEMENS VALVE 599-01123	ALL			15	6		
100935	3-WAY SIEMENS VALVE 599-01137	ALL			15	6		
100936	3-WAY SIEMENS VALVE 599-01138	ALL			15	6		
100937	3-WAY SIEMENS VALVE 599-01139	ALL			15	6		
011-800000-000	VALVE ACTUATOR - SIEMENS SSC81.5U	ALL			15	5		
100938	VALVE ACTUATOR - SIEMENS SSC61.5U	ALL			15	5		
UV0434	VALVE UNION				15	8		
700073	BALL VALVE - 3/4"							
700154	CIRCUIT SETTER - 3/4"				15	11		
706061	BALL VALVE - W/MEMORY INDICATOR				15	9		
700077	Y STRAINER - 3/4"				15	10		
UV0489	1/2 NPT BRASS PLUG							



### Freight Zone Map - Cost Adders



Standard Delivery	Zone 1: Add 2.5% of List Price	Zone 3: Add 3.6% of List Price
	Zone 2: Add 3.5% of List Price	Zone 4: Add 3.8% of List Price
	Zone 5: Add 5.0% of List Price	Zone 6: Add 6.0% of List Price

Canada Minimum freight charge of \$125  
 Zone 5 Covers: Quebec, British Columbia, and Lower Ontario  
 Zone 6 Covers: Alberta, Saskatchewan, and Manitoba

2-Day Expedite	Zone 1: Add 8.5% of List Price	Zone 3: Add 11% of List Price
	Zone 2: Add 10% of List Price	Zone 4: Add 12% of List Price
	Zone 5: Add 12% of List Price - US Only	