

New Magic 4.0 Selection and Pricing Software Installation Instructions

Auto Install Link <http://www.tks-hvac.com/MagicAire/Installs/NewMagic4/NewMagic4.htm>

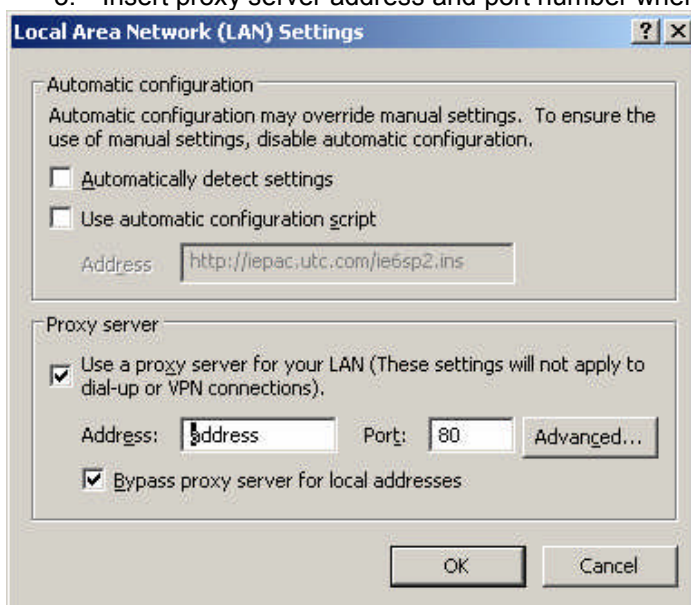
Manual Install Link www.tks-hvac.com/MagicAire/Installs/NewMagic4/NewMagic4_CD_Install.zip

New Magic 4 Installation Instructions

1. Use the first link to auto-install. If software installs correctly, skip to step 6. If auto-install does not work, Windows updates may not be current. Confirm updates in box below are present. If auto-install still does not work, follow steps 2 through 5.
2. Create folder called "temp" on Desktop. If a "temp" folder already exists, delete or move the contents.
3. Click Manual (CD) Install Link. Save to "temp" folder on Desktop.
4. Open "temp" folder. Use WinZip or other zip file utility to extract the files to the "temp" folder.
5. In "temp" folder, double click on file "NewMagic4.application". Click on "Install" if warning message appears. Software will install.
6. Software will open to screen with menu buttons "Create New Job" and "Open Existing Job". Select "Create New Job" and begin. Exit software using menu selection File/Exit.
7. Launch software from Start menu, under Programs, Magic Aire, New Magic 4.
8. If desired, create shortcut as follows: go to Start menu, select Programs, Magic Aire, then right click on "New Magic 4" and select "Create Shortcut". Then right click on the shortcut, select "Cut", right click on Desktop, select "Paste". Shortcut icon is on Desktop ready for use.
9. Delete "temp" folder and all contents.
10. Software will search for update each time it is started, if internet connection is detected.

To allow automatic update from behind a firewall:

1. Go to Control Panel / Internet Options. Select Connections and LAN settings.
2. Make sure boxes for "Automatically detect..." and "Use Automatic..." are UNCHECKED.
3. Insert proxy server address and port number where indicated.



System Requirements:

The following Microsoft Windows software updates are required for successful installation:

- Microsoft Data Access Components 2.8
- .NET Framework 2.0
- Windows Installer 3.1

Obtain these from your IT professional or go to Start Menu/Settings/Control Panel/Automatic Updates.