



## HB Drainpan Replacement Instructions

### Products Covered:

HBB series horizontal belt drive air handling units with  
-smooth tube plastic drainpans  
-"hex" fitting plastic drainpans  
-steel drainpans (galvanized or stainless steel).

**Tools Required:** 3/8" drill bit, 3/8" drill/driver, 5/16" nut driver, torpedo level, work gloves, safety glasses.

**Safety Warning:** Lock Out/Tag Out all power supplies before starting work. Work should be performed by a qualified technician. Magic Aire strongly recommends that HB units be set on the floor or workbench for the procedure described here. Use extreme caution when working at heights.



Figure 1  
"Smooth Tube" Plastic Drainpan



Figure 2  
"Hex Connection" Plastic Drainpan



Figure 3  
Steel (Stainless or Galvanized) Drainpan

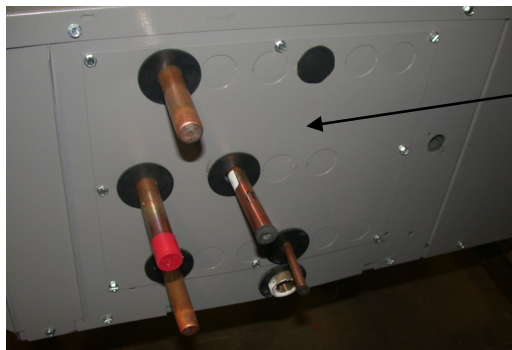


Figure 4

Coil Stubout Panel (unit sizes 04-20)



Filter Door

Figure 5  
Coil Stubout Panel shown removed (sizes 04-20)

### Step 2:

Remove flat coil stubout panel (sizes 04-20). See Figures 4 and 5. Panel removed in Figure 5. For sizes 30-80, skip to Step 3—these have single piece coil panels.



Figure 6  
Filter removal.

**Step 3:**  
Remove filter door and filter (Figure 5 and 6).

**Step 4:**  
Remove coil retaining screws (4ea sizes 04-20, up to 6ea sizes 30-80). Screws attach the first coil to the coil panel. Screws are visible from the coil side (Figure 7) and are accessible from the filter side of the unit (Figure 8).

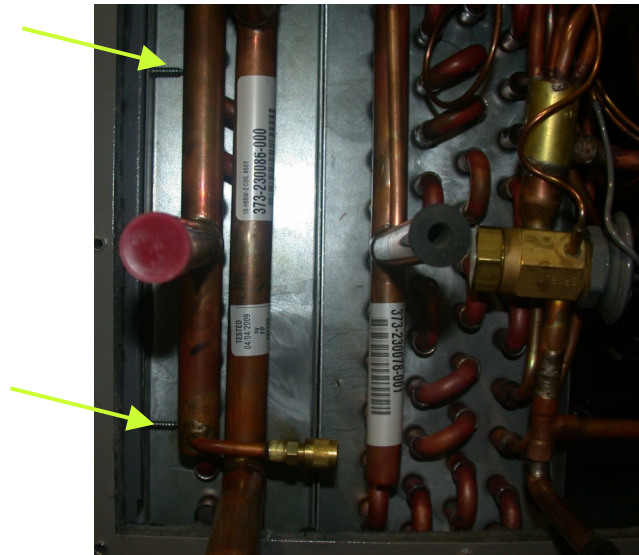


Figure 7  
Coil Retaining Screws

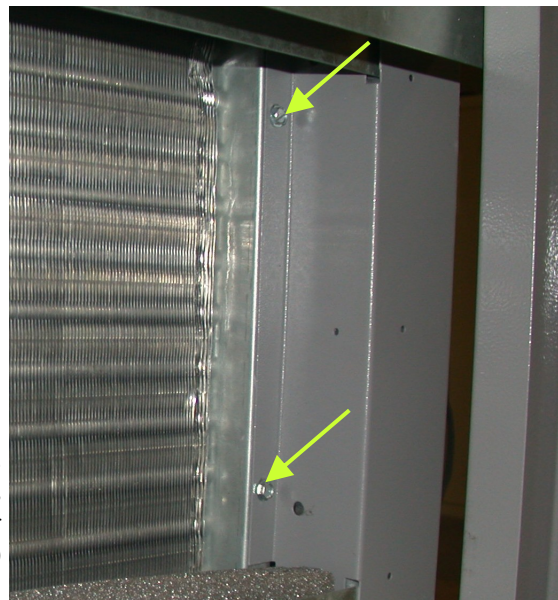


Figure 8  
Coil Retaining Screws  
-filter side view (filter removed)

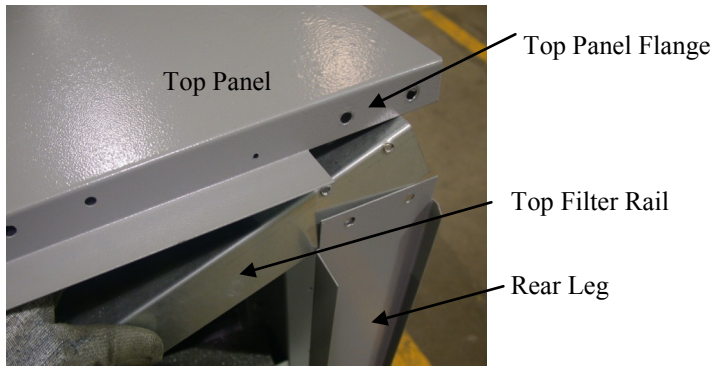


Figure 9



Figure 10

**Step 5:**

Remove top panel screws at sides and rear (rear leg and coil panel) to allow top to be lifted up. Front screws can remain. Remove top filter rail. (Figure 9 and 10). **NOTE: Insure unit is adequately supported before removing top panel screws!**

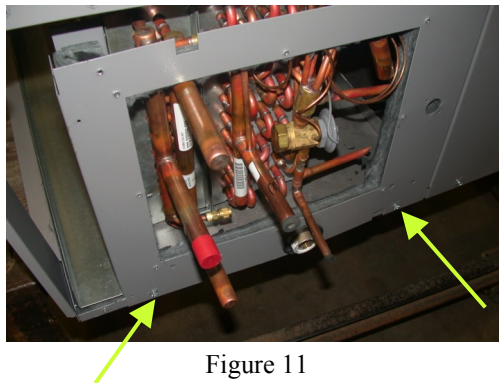


Figure 11



Figure 12

**Step 6:**

Remove screws at bottom of coil panel. Remove coil panel. (Figure 11 and 12)

**Step 7:**

Remove coils from unit along with drainpan. Drainpan will slide out of unit (Figure 13, 14). To remove coils and drainpan, top will need to be lifted up as shown in Figure 10.



Figure 13



Figure 14

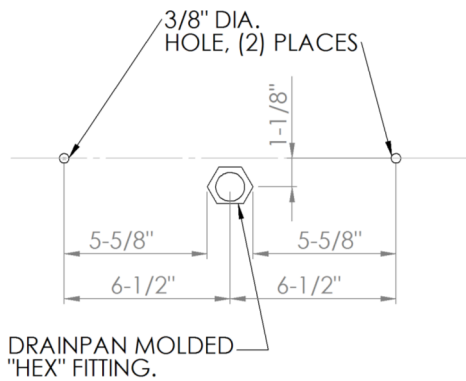


Figure 15

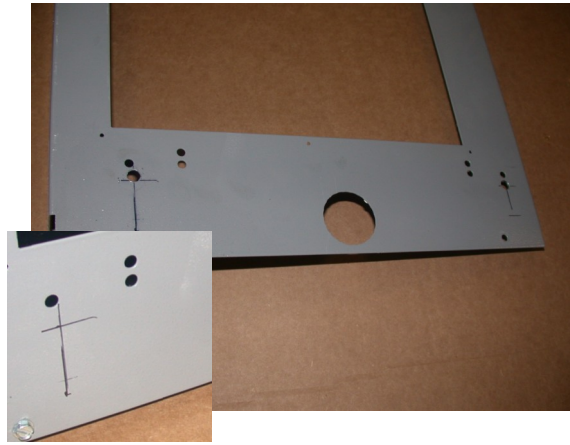


Figure 16

### Step 8:

“SMOOTH TUBE” PLASTIC DRAINPAN—Will be replaced by “Hex Connection” plastic drainpan as follows: Drill two new holes in coil panel. Locate holes using sketch in Figure 15. Set coil panel on a bench or safe location before drilling (Figure 16). **DO NOT DRILL HOLES WITH COIL PANEL INSTALLED-DRAINPAN WILL BE DAMAGED!**

STEEL DRAINPAN: Skip to Step 9.  
 “HEX CONNECTION” PLASTIC DRAINPAN: Will be replaced with same, skip to Step 11 (no leveling required).

### Step 9:

Single Wall Unit: Install drainpan and coils in unit.

Double Wall Units: DW coil panels have liner panel that ends above the edge of the drainpan. For DW coil panel apply adhesive backed closed cell insulation (15-1/4" x 1-1/2", see Figure 17) to inside of coil panel, flush with bottom of liner panel. This provides an air seal the end of the drainpan. Install drainpan and coils.

All Units: Set coil panel in place and attach coils to coil panels. Install coil panel screws at bottom and top of unit. Install all top panel screws.

**NOTE:** Make sure that the top filter rail is behind the top panel flange, and that the rear leg is on the outside of the top panel flange (Figure 9).

PLASTIC DRAINPAN: Proceed to Step 10.

STEEL DRAINPAN: Attach drainpan to coil panel using 2ea #8 sheet metal screws. Skip to Step 12.

Align top surface flush with bottom of liner panel (DW unit only)

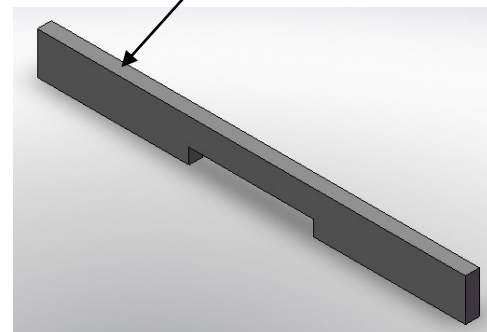


Figure 17  
 Closed Cell Insulation  
 (included with drainpan, loose)



Figure 18



Figure 19  
(level is resting on edge of plastic drainpan)

**Step 10:**

Prepare #8 screw and washer for driving in Step 11. Check coil panel level, then level the drainpan so that drainpan matches coil panel “level bubble” in front-to-back direction (Figures 18 and 19). **Hold drainpan in position.**



Figure 20



Figure 21

**Step 11:**

Holding the drainpan in the proper position, attach drainpan to coil panel using 2ea #8 sheet metal screws and washers. Use awl or small screwdriver to locate holes (insulation on coil panel may make it difficult to see the holes on the drainpan). See Figures 20 and 21.

**Step 12:**

Reinstall the coil stubout panel (sizes 04-20)  
Reinstall filter and filter door.  
Unit is ready for service.